

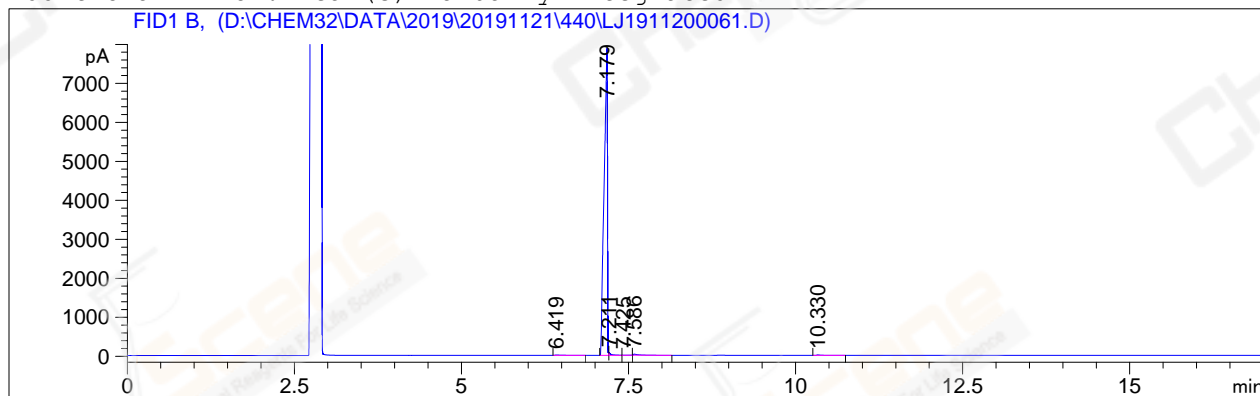
=====

Acq. Operator	: zl_1544	Seq. Line	: 78
Acq. Instrument	: GC-06	Location	: 16 (B)
Injection Date	: 11/23/2019 05:25:59	Inj	: 1
		Inj Volume	: 1 µl

Acq. Method : D:\CHEM32\DATA\2019\20191121\440\GC-FQ.M
Last changed : 11/22/2019 11:25:45 by zl_1544
Analysis Method : D:\CHEM32\DATA\2019\20191121\440\GC-FQ.M (Sequence Method)
Last changed : 11/25/2019 15:49:40 by zl_1544
Method Info : test

Catalog No : CS-W000083 Batch# Lc1119115 (BY ACN) HP-5 A-CP-43

Additional Info : Peak(s) manually integrated



=====
Area Percent Report
=====

Sorted By : Signal
Multiplier : 1.0000
Dilution : 1.0000
Do not use Multiplier & Dilution Factor with ISTDs

Signal 1: FID1 B,

Peak #	RetTime [min]	Type	Width [min]	Area [pA*s]	Height [pA]	Area %
1	6.419	BB	0.1253	88.56026	9.12047	0.32428
2	7.179	BV	0.0468	2.67935e4	7894.21924	98.10871
3	7.211	VV	0.0401	183.64243	60.73102	0.67244
4	7.425	VB	0.0559	16.44936	3.93754	0.06023
5	7.586	BB	0.0747	171.32906	28.94736	0.62735
6	10.330	BB	0.0612	56.52888	12.21997	0.20699

Totals : 2.73100e4 8009.17559

=====
*** End of Report ***