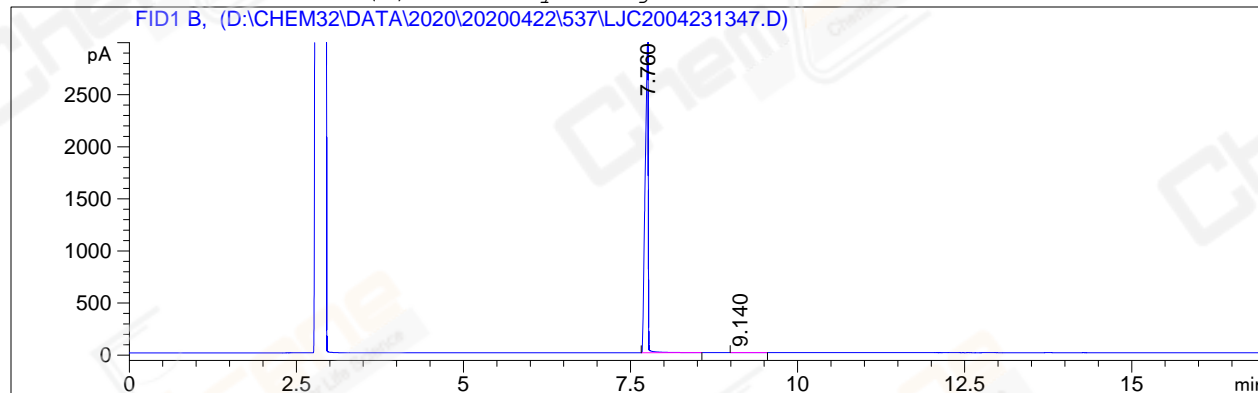


=====

Acq. Operator	: YSS_1194	Seq. Line	: 101
Acq. Instrument	: GC-06	Location	: 69 (B)
Injection Date	: 4/24/2020 08:33:27	Inj	: 1
		Inj Volume	: 1 µl
Acq. Method	: D:\CHEM32\DATA\2020\20200422\537\GC-FQ.M		
Last changed	: 4/23/2020 15:59:57 by YSS_1194		
Analysis Method	: D:\CHEM32\DATA\2020\20200422\537\GC-FQ.M (Sequence Method)		
Last changed	: 4/24/2020 09:35:25 by YSS_1194		
Catalog No	: CS-W005244 (BY ACN) HP-5-A-CP-51		

Additional Info : Peak(s) manually integrated



=====  
Area Percent Report  
=====

Sorted By : Signal  
Multiplier : 1.0000  
Dilution : 1.0000  
Do not use Multiplier & Dilution Factor with ISTDs

Signal 1: FID1 B,

Peak #	RetTime [min]	Type	Width [min]	Area [pA*s]	Height [pA]	Area %
1	7.760	BB	0.0388	9618.39844	3224.04199	99.90971
2	9.140	MM	0.3054	8.69197	4.74277e-1	0.09029

Totals : 9627.09040 3224.51627

=====  
\*\*\* End of Report \*\*\*