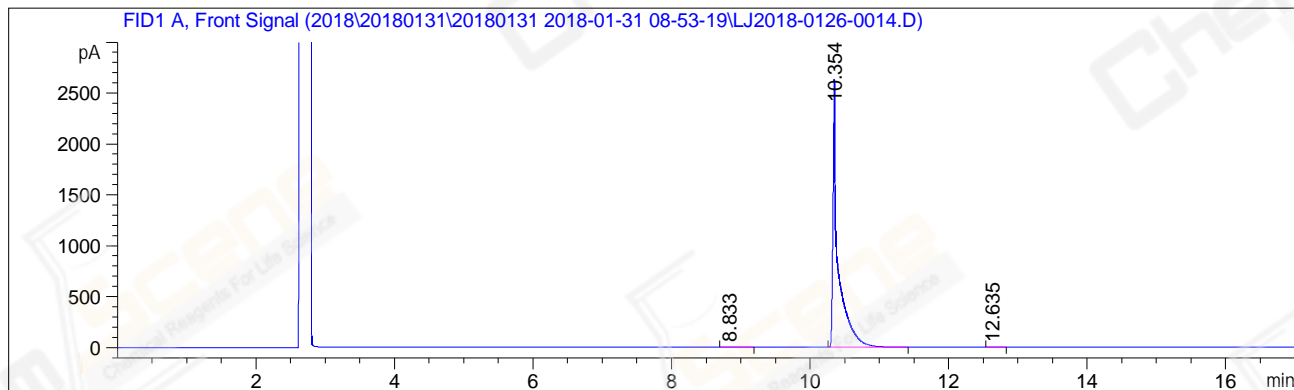


```
=====
Acq. Operator   : LSL_985                      Seq. Line : 23
Acq. Instrument : GC7890                      Location  : 17 (F)
Injection Date  : 1/31/2018 5:08:28 PM        Inj       : 1
                                           Inj Volume: 1 µl
Acq. Method     : D:\Chem32\1\Data\2018\20180131\20180131_2018-01-31_08-53-19\GC-FQ.M
Last changed    : 1/31/2018 11:23:53 AM by LSL_985
Analysis Method : d:\Chem32\1\Data\2018\20180131\20180131_2018-01-31_08-53-19\GC-FQ.M (
Sequence Method)
Last changed    : 2/2/2018 4:30:20 PM by LSL_985
                 (modified after loading)
CAS NO.         : 1138-52-9(BY ACN) HP-5 A-CP-21
=====
```

Additional Info : Peak(s) manually integrated



=====
Area Percent Report
=====

```
Sorted By      : Signal
Multiplier     : 1.0000
Dilution       : 1.0000
Do not use Multiplier & Dilution Factor with ISTDs
```

Signal 1: FID1 A, Front Signal

Peak #	RetTime [min]	Type	Width [min]	Area [pA*s]	Height [pA]	Area %
1	8.833	MM	0.2289	5.64978	4.11334e-1	0.04175
2	10.354	BB	0.0652	1.35220e4	2610.87378	99.92742
3	12.635	MM	0.0546	4.17155	1.27442	0.03083

Totals : 1.35318e4 2612.55953

=====
*** End of Report ***