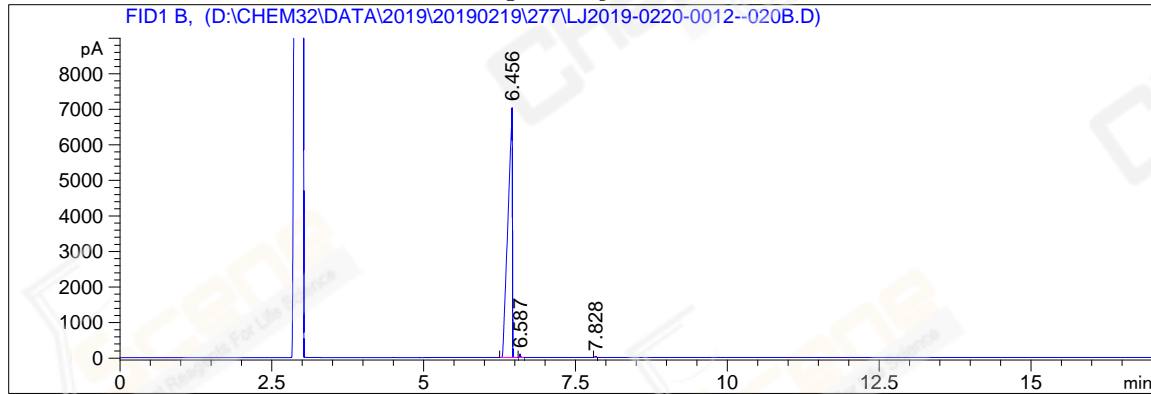


```
=====
Acq. Operator   : YSS_1194                      Seq. Line : 20
Acq. Instrument : GC-06                          Location  : 94 (B)
Injection Date  : 2/21/2019 1:43:01 AM           Inj       : 1
                                                    Inj Volume: 1 µl
Acq. Method     : D:\CHEM32\DATA\2019\20190219\277\GC-FQ.M
Last changed    : 2/20/2019 5:58:46 PM by YSS_1194
Analysis Method : D:\CHEM32\DATA\2019\20190219\277\GC-FQ.M (Sequence Method)
Last changed    : 2/21/2019 9:38:09 AM by YSS_1194
                  (modified after loading)
Method Info     : test
Catalog No     : CS-W020712 Batch#Lc0220012(BY ACN) HP-5 A-CP-43
=====
```

Additional Info : Peak(s) manually integrated



=====  
Area Percent Report  
=====

```
Sorted By      : Signal
Multiplier     : 1.0000
Dilution       : 1.0000
Do not use Multiplier & Dilution Factor with ISTDs
```

Signal 1: FID1 B,

Peak #	RetTime [min]	Type	Width [min]	Area [pA*s]	Height [pA]	Area %
1	6.456	BV	0.0637	3.51755e4	7062.61426	99.62324
2	6.587	VB	0.0169	100.73418	97.29403	0.28530
3	7.828	BB	0.0180	32.29280	28.59857	0.09146

Totals :                      3.53085e4   7188.50686

=====  
\*\*\* End of Report \*\*\*