

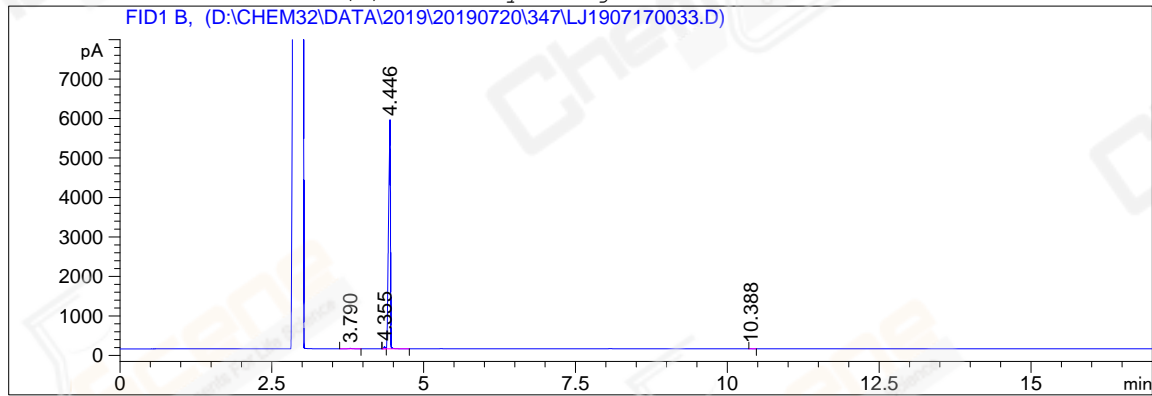
=====

Acq. Operator	: YSS_1194	Seq. Line	: 26
Acq. Instrument	: GC-06	Location	: 76 (B)
Injection Date	: 7/20/2019 8:40:16 PM	Inj	: 1
		Inj Volume	: 1 µl

Acq. Method : D:\CHEM32\DATA\2019\20190720\347\GC-FQ.M
Last changed : 7/20/2019 10:07:21 AM by System
Analysis Method : D:\CHEM32\DATA\2019\20190720\347\GC-FQ.M (Sequence Method)
Last changed : 7/22/2019 8:56:01 AM by YSS_1194
Method Info : test

Catalog No : CS-W020194 Batch#Lc0716106 (BY ACN) HP-5 A-CP-43

Additional Info : Peak(s) manually integrated



=====
Area Percent Report
=====

Sorted By : Signal
Multiplier : 1.0000
Dilution : 1.0000
Do not use Multiplier & Dilution Factor with ISTDs

Signal 1: FID1 B,

Peak #	RetTime [min]	Type	Width [min]	Area [pA*s]	Height [pA]	Area %
1	3.790	BB	0.0533	51.40620	12.35715	0.40750
2	4.355	BV E	0.0285	82.13602	46.71231	0.65110
3	4.446	VB R	0.0324	1.24742e4	5765.20117	98.88423
4	10.388	BB	0.0318	7.21080	3.21462	0.05716

Totals : 1.26149e4 5827.48525

=====
*** End of Report ***
=====