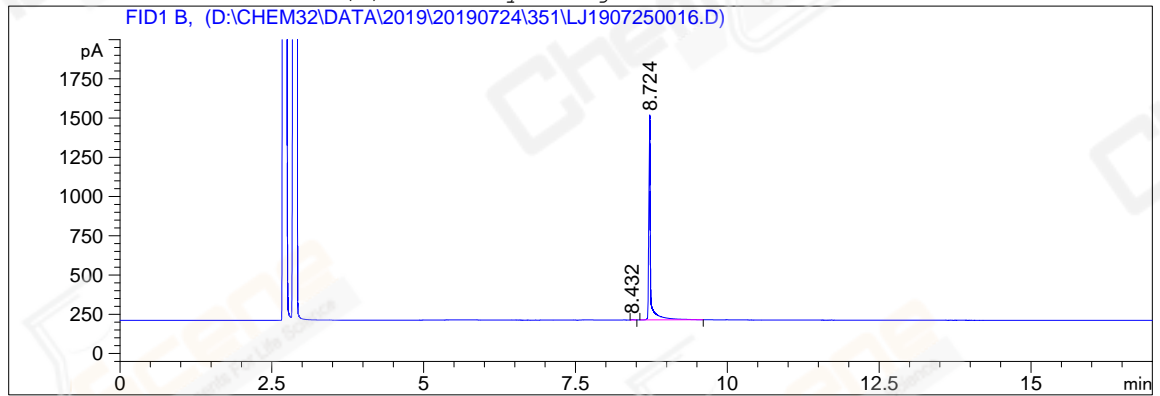


```

=====
Acq. Operator   : YSS_1194                      Seq. Line : 88
Acq. Instrument : GC-06                          Location  : 85 (B)
Injection Date  : 7/26/2019 5:44:48 AM           Inj       : 1
                                                    Inj Volume: 1 µl
Acq. Method     : D:\CHEM32\DATA\2019\20190724\351\GC-FQ.M
Last changed    : 7/25/2019 3:34:19 PM by YSS_1194
Analysis Method : D:\CHEM32\DATA\2019\20190724\351\GC-FQ.M (Sequence Method)
Last changed    : 7/26/2019 11:12:02 AM by YSS_1194
Method Info     : test

Catalog No      : CS-W002198 Batch# Lc0725023 (BY ACN) HP-5 A-CP-43
    
```

Additional Info : Peak(s) manually integrated



Area Percent Report

```

=====
Sorted By      : Signal
Multiplier     : 1.0000
Dilution       : 1.0000
Do not use Multiplier & Dilution Factor with ISTDs
    
```

Signal 1: FID1 B,

Peak #	RetTime [min]	Type	Width [min]	Area [pA*s]	Height [pA]	Area %
1	8.432	MM	0.0500	7.39885	2.46497	0.27540
2	8.724	BB	0.0298	2679.18433	1292.23010	99.72460

Totals : 2686.58318 1294.69507

*** End of Report ***