

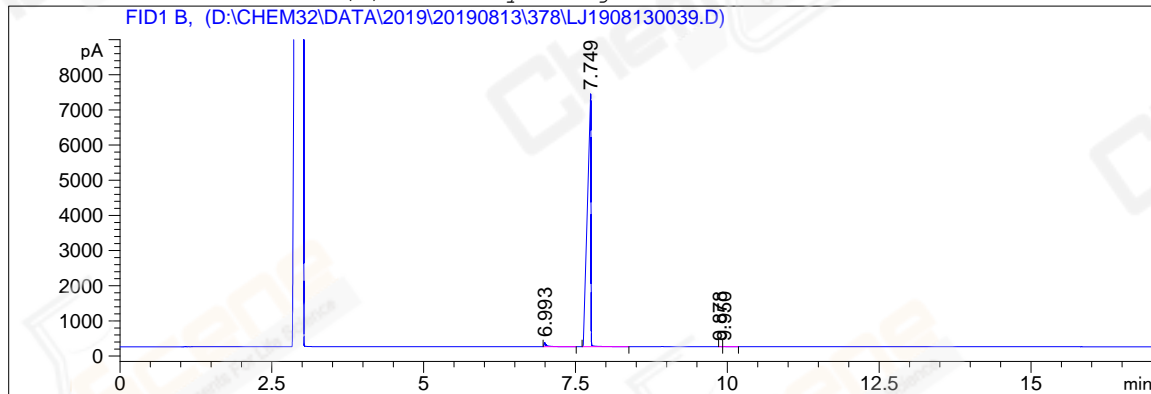
=====

Acq. Operator	: YSS_1194	Seq. Line	: 40
Acq. Instrument	: GC-06	Location	: 29 (B)
Injection Date	: 8/14/2019 4:54:22 AM	Inj	: 1
		Inj Volume	: 1 µl

Acq. Method : D:\CHEM32\DATA\2019\20190813\378\GC-FQ.M
Last changed : 8/13/2019 5:30:54 PM by YSS_1194
Analysis Method : D:\CHEM32\DATA\2019\20190813\378\GC-FQ.M (Sequence Method)
Last changed : 8/14/2019 11:11:59 AM by YSS_1194
Method Info : test

Catalog No : CS-W005023 Batch# Lc0813034 (BY ACN) HP-5 A-CP-43

Additional Info : Peak(s) manually integrated



=====
Area Percent Report
=====

Sorted By : Signal
Multiplier : 1.0000
Dilution : 1.0000
Do not use Multiplier & Dilution Factor with ISTDs

Signal 1: FID1 B,

Peak #	RetTime [min]	Type	Width [min]	Area [pA*s]	Height [pA]	Area %
1	6.993	BB	0.0411	333.08682	109.39186	1.12684
2	7.749	BB	0.0520	2.91905e4	7218.16064	98.75246
3	9.878	FM	0.0513	12.72911	4.13583	0.04306
4	9.950	FM	0.0842	22.94854	4.54010	0.07764

Totals : 2.95593e4 7336.22844

=====
*** End of Report ***
=====