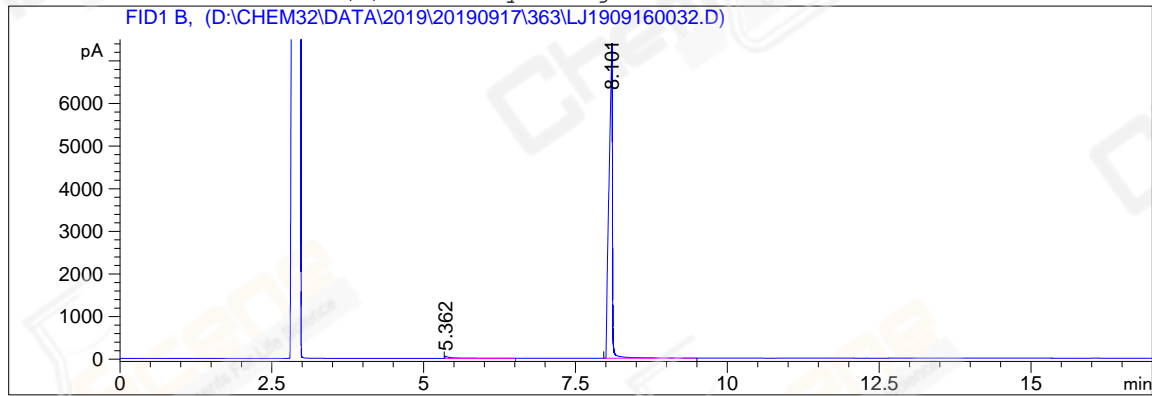


```
=====
Acq. Operator   : YSS_1194                      Seq. Line :   23
Acq. Instrument : GC-06                          Location  :   42 (B)
Injection Date  : 9/18/2019 09:25:32            Inj       :    1
                                                    Inj Volume: 1 µl
Acq. Method     : D:\CHEM32\DATA\2019\20190917\363\GC-FQ.M
Last changed    : 9/18/2019 09:16:13 by z1_1544
Analysis Method : D:\CHEM32\DATA\2019\20190917\363\GC-FQ.M (Sequence Method)
Last changed    : 9/18/2019 14:11:15 by z1_1544
Method Info     : test

Catalog No      : CS-W007512 Batch#Lc0916036 (BY ACN) HP-5 A-CP-43
=====
```

Additional Info : Peak(s) manually integrated



=====  
Area Percent Report  
=====

Sorted By : Signal  
Multiplier : 1.0000  
Dilution : 1.0000  
Do not use Multiplier & Dilution Factor with ISTDs

Signal 1: FID1 B,

Peak #	RetTime [min]	Type	Width [min]	Area [pA*s]	Height [pA]	Area %
1	5.362	BB	0.0950	384.77780	50.65225	1.30573
2	8.101	BB	0.0539	2.90837e4	7393.96875	98.69427

Totals :                                   2.94684e4  7444.62100

=====  
\*\*\* End of Report \*\*\*