

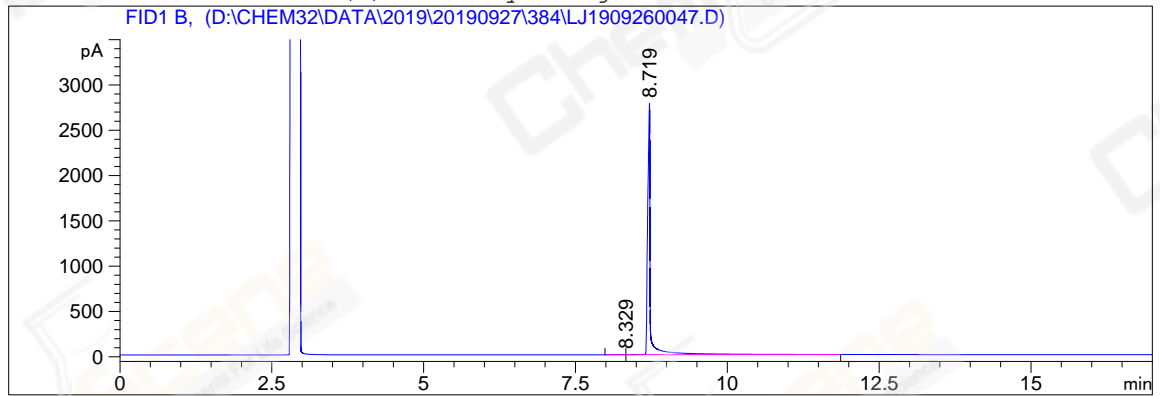
```

=====
Acq. Operator   : z1_1544                      Seq. Line :   16
Acq. Instrument : GC-06                       Location  :   56 (B)
Injection Date  : 9/27/2019 18:11:19          Inj       :    1
                                                Inj Volume: 1 µl

Acq. Method     : D:\CHEM32\DATA\2019\20190927\384\GC-FQ.M
Last changed    : 9/27/2019 11:41:40 by System
Analysis Method : D:\CHEM32\DATA\2019\20190927\384\GC-FQ.M (Sequence Method)
Last changed    : 9/29/2019 09:21:12 by z1_1544
Method Info     : test

Catalog No     : CS-W002198 Batch#Lc0926046 A-CP-43
  
```

Additional Info : Peak(s) manually integrated



=====
 Area Percent Report
 =====

```

Sorted By      : Signal
Multiplier     : 1.0000
Dilution       : 1.0000
Do not use Multiplier & Dilution Factor with ISTDs
  
```

Signal 1: FID1 B,

Peak #	RetTime [min]	Type	Width [min]	Area [pA*s]	Height [pA]	Area %
1	8.329	MF	0.2499	8.55053	5.70294e-1	0.09728
2	8.719	FM	0.0528	8780.98340	2769.55469	99.90272

Totals : 8789.53393 2770.12498

=====
 *** End of Report ***