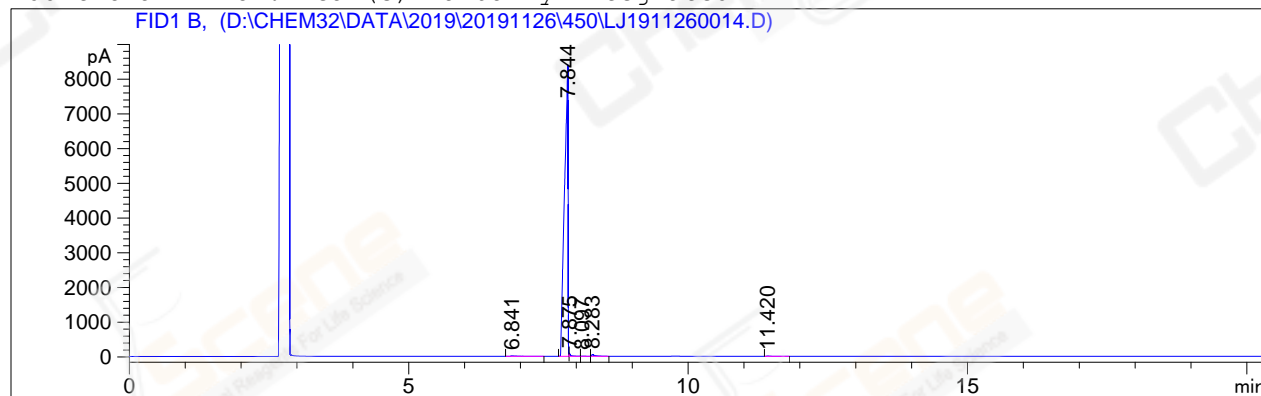


```
=====
Acq. Operator   : zl_1544                               Seq. Line : 272
Acq. Instrument : GC-06                                 Location  : 84 (B)
Injection Date  : 12/2/2019 08:29:46                   Inj       : 1
                                                    Inj Volume: 1 µl
Acq. Method     : D:\CHEM32\DATA\2019\20191126\450\GC-FQ-15rate.M
Last changed    : 11/30/2019 14:40:32 by zl_1544
Analysis Method : D:\CHEM32\DATA\2019\20191126\450\GC-FQ-15rate.M (Sequence Method)
Last changed    : 12/3/2019 15:00:08 by zl_1544
Method Info     : test

Catalog No      : CS-W000083 Batch# Lc1125021 (BY ACN) HP-5 A-CP-43
=====
```

Additional Info : Peak(s) manually integrated



=====
Area Percent Report
=====

```
Sorted By      : Signal
Multiplier     : 1.0000
Dilution       : 1.0000
Do not use Multiplier & Dilution Factor with ISTDs
```

Signal 1: FID1 B,

Peak #	RetTime [min]	Type	Width [min]	Area [pA*s]	Height [pA]	Area %
1	6.841	BB	0.1117	147.51804	16.46641	0.39012
2	7.844	BV	0.0593	3.71901e4	8322.07813	98.35208
3	7.875	VV	0.0345	180.49545	69.14201	0.47733
4	8.097	VB	0.0553	18.80696	4.48268	0.04974
5	8.283	BB	0.0622	220.13698	47.39001	0.58217
6	11.420	BB	0.0589	56.17273	12.48370	0.14855

Totals : 3.78132e4 8472.04294

=====
*** End of Report ***