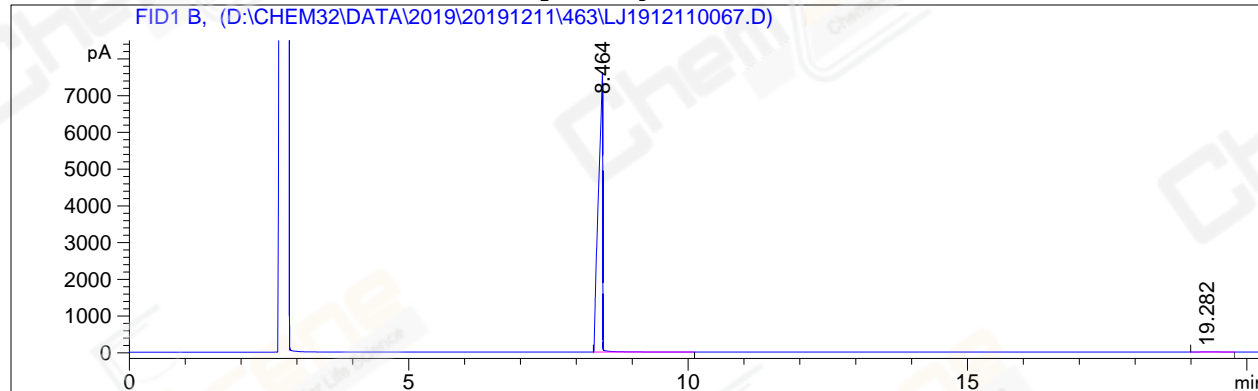


```
=====
Acq. Operator   : YSS_1194                      Seq. Line :   59
Acq. Instrument : GC-06                         Location  :  41 (B)
Injection Date  : 12/12/2019 23:28:10          Inj       :    1
                                                Inj Volume:  1 µl
Acq. Method     : D:\CHEM32\DATA\2019\20191211\463\GC-FQ-15rate.M
Last changed    : 12/12/2019 09:26:21 by YSS_1194
Analysis Method : D:\CHEM32\DATA\2019\20191211\463\GC-FQ-15rate.M (Sequence Method)
Last changed    : 12/13/2019 09:10:07 by YSS_1194
Catalog No     : CS-W005023 Batch#Lc1211058 (BY ACN) HP-5 A-CP-43
=====
```

Additional Info : Peak(s) manually integrated



=====
Area Percent Report
=====

Sorted By : Signal
Multiplier : 1.0000
Dilution : 1.0000
Do not use Multiplier & Dilution Factor with ISTDs

Signal 1: FID1 B,

Peak #	RetTime [min]	Type	Width [min]	Area [pA*s]	Height [pA]	Area %
1	8.464	BB	0.0664	4.03535e4	7637.16162	99.71067
2	19.282	MM	0.4164	117.09231	4.68619	0.28933
Totals :				4.04705e4	7641.84781	

=====
*** End of Report ***