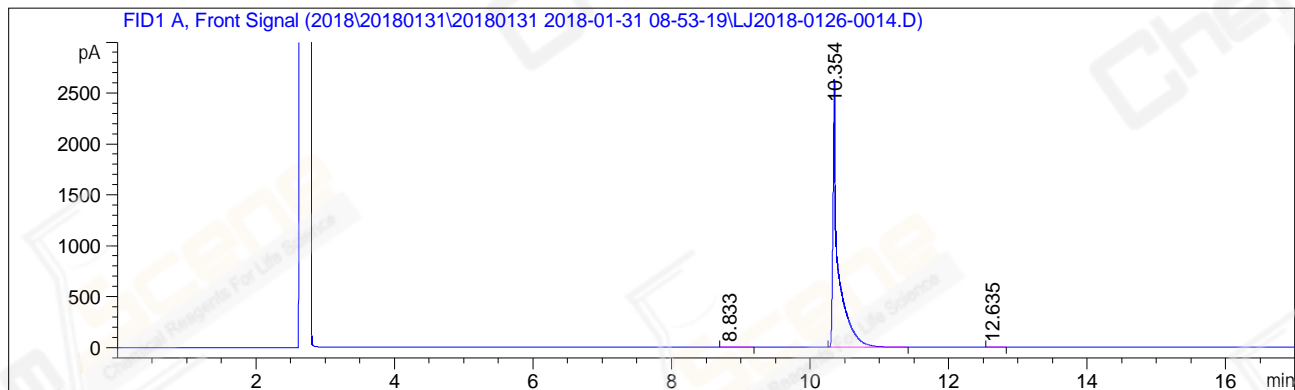


```
=====
Acq. Operator   : LSL_985                      Seq. Line :   23
Acq. Instrument : GC7890                      Location  :   17 (F)
Injection Date  : 1/31/2018 5:08:28 PM        Inj       :    1
                                           Inj Volume: 1 µl
Acq. Method     : D:\Chem32\1\Data\2018\20180131\20180131_2018-01-31_08-53-19\GC-FQ.M
Last changed    : 1/31/2018 11:23:53 AM by LSL_985
Analysis Method : d:\Chem32\1\Data\2018\20180131\20180131_2018-01-31_08-53-19\GC-FQ.M (
                  Sequence Method)
Last changed    : 2/2/2018 4:30:20 PM by LSL_985
                  (modified after loading)
CAS NO.         : 1138-52-9(BY ACN) HP-5 A-CP-21
=====
```

Additional Info : Peak(s) manually integrated



=====
Area Percent Report
=====

```
Sorted By      :      Signal
Multiplier     :      1.0000
Dilution       :      1.0000
Do not use Multiplier & Dilution Factor with ISTDs
```

Signal 1: FID1 A, Front Signal

Peak #	RetTime [min]	Type	Width [min]	Area [pA*s]	Height [pA]	Area %
1	8.833	MM	0.2289	5.64978	4.11334e-1	0.04175
2	10.354	BB	0.0652	1.35220e4	2610.87378	99.92742
3	12.635	MM	0.0546	4.17155	1.27442	0.03083

```
Totals :                      1.35318e4  2612.55953
```

=====
*** End of Report ***