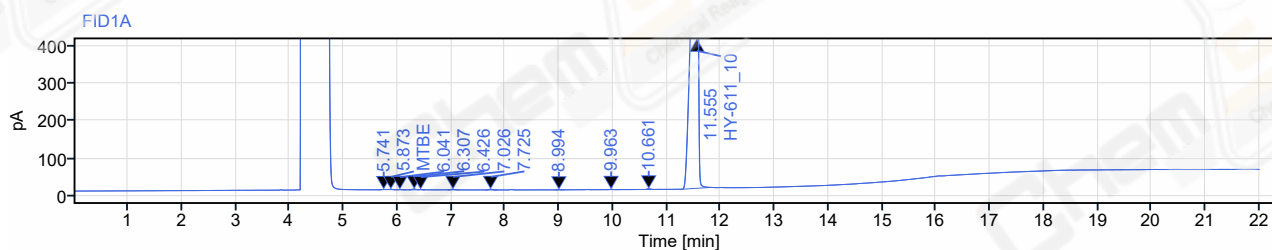
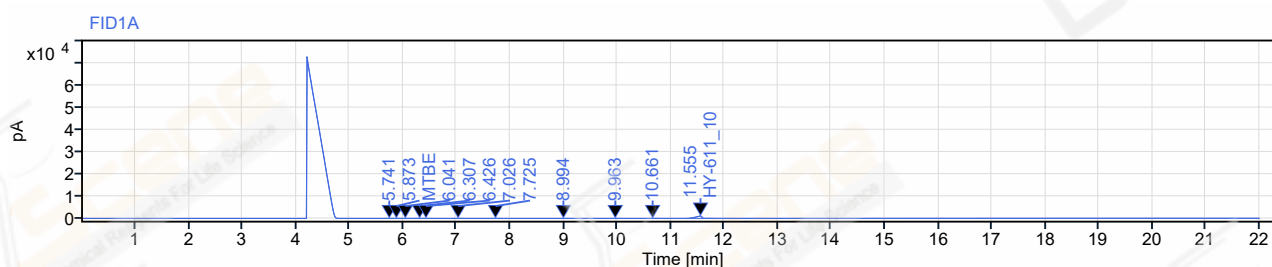


**Data file:** YJL12713-007-10-5\_1.dx  
**Sequence Name:** 20220504-1  
**Sample name:** YJL12713-007-10-5\_1  
**Instrument:** GC-10  
**Inj. volume:** 1.000 µL  
**Acq. method:** HY-611\_10-H01RS02(GC).amx  
**Processing method:** HY-611\_10.pmx  
**Manually modified:** Manual Integration

**CAS NO.:** 5239-82-7  
**Project Name:** HY-611\_RD  
**Operator:** gmm2670  
**Injection date:** 2022-05-04 11:19:42+08:00  
**Location:** 2  
**Type:** Sample  
**Sample amount:** 0.00

**Sample Description** HY-611\_10-20220503  
 5mg/ml(BY ACN) CP-  
 Volamine(A-CP-116)

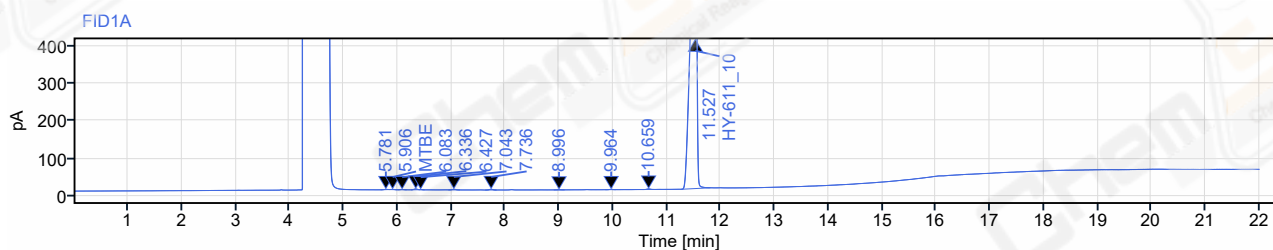
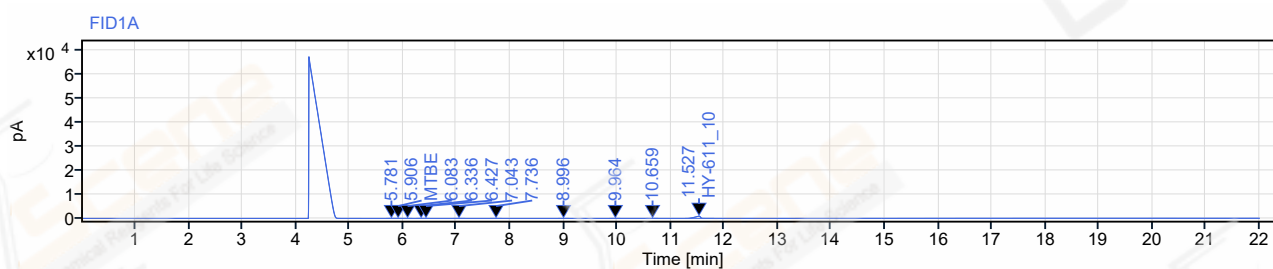


RT [min]	Type	Width [min]	Area	Height	Area%	Name
5.741	MM m	0.17	2.64	0.52	0.03	
5.873	MM m	0.14	3.35	0.78	0.04	MTBE
6.041	MM m	0.18	3.68	0.70	0.04	
6.307	BV	0.17	9.89	1.94	0.11	
6.426	MM m	0.13	3.76	0.89	0.04	
7.026	MM m	0.22	7.83	1.51	0.09	
7.725	VB	0.23	8.96	1.86	0.10	
8.994	MM m	0.19	1.54	0.38	0.02	
9.963	MM m	0.22	3.67	0.87	0.04	
10.661	BB	0.21	8.32	1.94	0.10	
11.555	BM m	0.54	8672.63	1089.97	99.39	HY-611_10
<b>Sum</b>			<b>8726.29</b>			

**Data file:** YJL12713-007-10-5\_2.dx  
**Sequence Name:** 20220504-1  
**Sample name:** YJL12713-007-10-5\_2  
**Instrument:** GC-10  
**Inj. volume:** 1.000 µL  
**Acq. method:** HY-611\_10-H01RS02(GC).amx  
**Processing method:** HY-611\_10.pmx  
**Manually modified:** Manual Integration

**CAS NO.:** 5239-82-7  
**Project Name:** HY-611\_RD  
**Operator:** gmm2670  
**Injection date:** 2022-05-04 11:44:58+08:00  
**Location:** 2  
**Type:** Sample  
**Sample amount:** 0.00

**Sample Description** HY-611\_10-20220503  
 5mg/ml(BY ACN) CP-  
 Volamine(A-CP-116)



Signal: FID1A						
RT [min]	Type	Width [min]	Area	Height	Area%	Name
5.781	MM m	0.16	2.90	0.68	0.04	
5.906	MM m	0.15	2.68	0.62	0.04	MTBE
6.083	MM m	0.16	3.41	0.72	0.05	
6.336	MM m	0.15	9.55	2.10	0.14	
6.427	MM m	0.10	2.24	0.66	0.03	
7.043	MM m	0.22	7.95	1.63	0.12	
7.736	BB	0.21	9.01	1.95	0.13	
8.996	MM m	0.20	1.49	0.33	0.02	
9.964	MM m	0.20	2.74	0.64	0.04	
10.659	MM m	0.21	6.33	1.51	0.09	
11.527	BM m	0.54	6797.54	942.63	99.29	HY-611_10
<b>Sum</b>			<b>6845.85</b>			