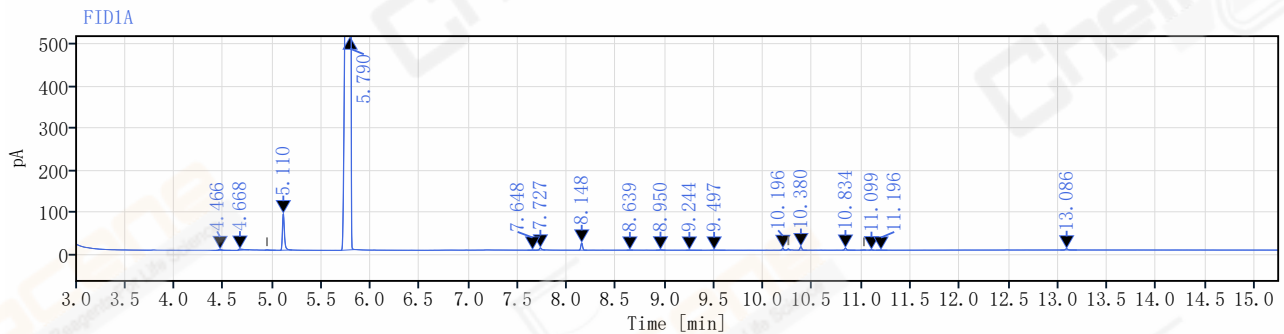
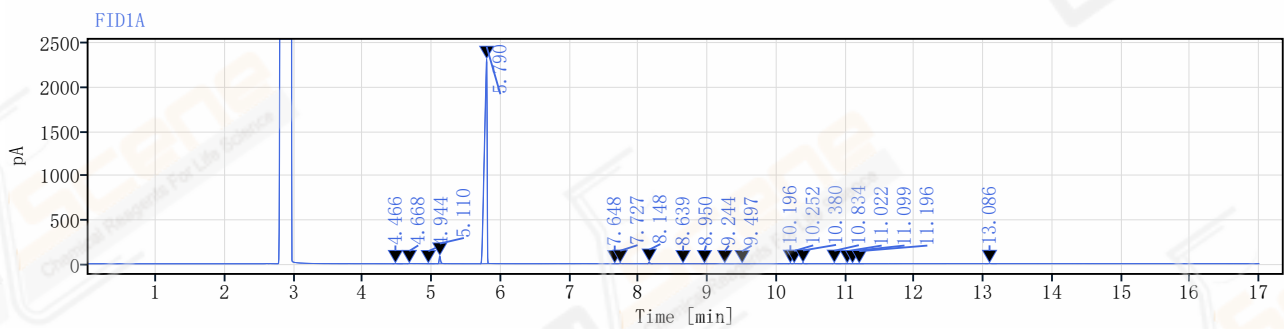


# Chromatogram and Results

<b>Sample ID:</b>	LJC202308290139-20221122184217	<b>Instrument:</b>	8860
<b>Batch No:</b>	1064129	<b>Sequence Name:</b>	20230829-1
<b>seq.creation operator:</b>	yuxiaoping	<b>Injection:</b>	1.000 µL
<b>Vial Number:</b>	110	<b>Run Time:</b>	17
<b>Instrument Method:</b>	GC-FQ.amx	<b>Injection Time:</b>	2023-08-29 20:21:46+08:00
<b>Processing Method:</b>	*LJC202308290139.pmx	<b>Column Type:</b>	HP-5
<b>chrom:</b>	/Leyan/Results/20230829-1.rslt	<b>CAS NO.:</b>	74181-34-3



No.	RT [min]	Area	Height	Plates EP	Resolution EP	Asymmetry	Rel Area %	Peak Name
1	4.47	4.931	2.172	102331		1.47	0.076	
2	4.67	8.916	2.544	16656	2.01	3.07	0.137	
3	4.94	1.212	0.740	262908	3.03	1.18	0.019	
4	5.11	122.903	86.993	336436	4.52	1.36	1.885	
5	5.79	6313.748	2317.330	91371	12.19	0.60	96.824	
6	7.65	0.767	0.515	740305	33.20	1.25	0.012	
7	7.73	8.175	5.147	646204	2.17	1.45	0.125	
8	8.15	21.492	17.347	1002083	11.89	1.04	0.330	
9	8.64	0.516	0.298	478920	11.91	1.31	0.008	
10	8.95	1.646	0.882	666360	6.67	1.27	0.025	
11	9.24	1.022	0.447	960090	7.22	1.37	0.016	

## Chromatogram and Results

No.	RT [min]	Area	Height	Plates EP	Resolution EP	Asymmetry	Rel Area %	Peak Name
12	9.50	1.207	0.507	664028	6.01	2.46	0.019	
13	10.20	5.297	4.288	1535242	17.63	1.12	0.081	
14	10.25	3.357	2.827	1631076	1.74	1.10	0.051	
15	10.38	10.710	8.495	1586441	3.93	1.02	0.164	
16	10.83	6.847	4.991	1624902	13.58	1.10	0.105	
17	11.02	0.748	0.531	1564142	5.43	1.04	0.011	
18	11.10	1.271	0.970	1722322	2.24	0.88	0.019	
19	11.20	0.810	0.436	1194206	2.58	0.83	0.012	
20	13.09	5.276	2.809	1309556	43.76	1.15	0.081	
Total:		6520.85	2460.270		191.71		100.000	