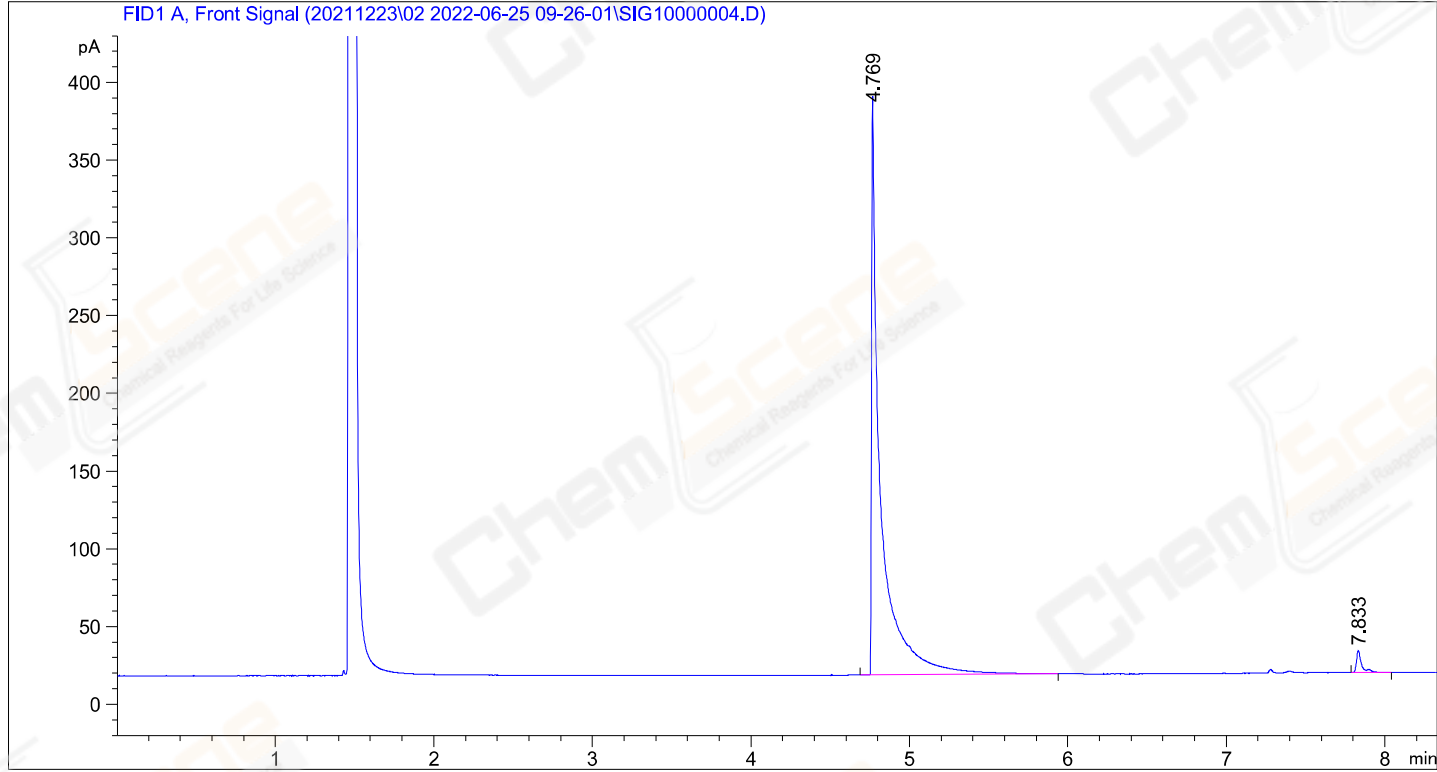


```
=====
Acq. Operator   : SYSTEM                       Seq. Line :    4
Sample Operator : SYSTEM
Acq. Instrument : 8860                         Location  :  4 (F)
Injection Date  : 6/25/2022 10:13:58 AM      Inj       :    1
                                           Inj Volume: 1 µl

Acq. Method     : D:\ChemStation\1\Data\20211223\02 2022-06-25 09-26-01\20211224-280-.M
Last changed    : 5/7/2022 3:06:36 PM by SYSTEM
Analysis Method : D:\ChemStation\1\Data\20211223\02 2022-06-25 09-26-01\20211224-280-.M (
Sequence Method)
Last changed    : 6/25/2022 12:36:38 PM by SYSTEM
                 (modified after loading)
Additional Info  : Peak(s) manually integrated
=====
```



=====  
 Area Percent Report  
 =====

Sorted By : Signal  
 Multiplier : 1.0000  
 Dilution : 1.0000  
 Do not use Multiplier & Dilution Factor with ISTDs

Signal 1: FID1 A, Front Signal

Peak #	RetTime [min]	Type	Width [min]	Area [pA*s]	Height [pA]	Area %
1	4.769	BB	0.0500	1438.19446	365.09860	97.81674
2	7.833	BB	0.0340	32.10032	13.86585	2.18326
Totals :				1470.29477	378.96445	

=====  
\*\*\* End of Report \*\*\*