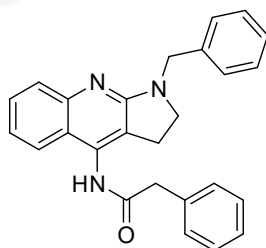


CAS NO.: 365565-02-2, DMSO



10.282
7.730
7.711
7.526
7.507
7.454
7.451
7.433
7.412
7.391
7.371
7.353
7.338
7.328
7.284
7.280
7.277
7.263
7.191
7.188
7.171

4.679

3.781

3.510

3.493

3.474

3.454

3.370

2.867

2.848

2.828

2.508

2.504

2.499

1.000

1.000

1.028

1.132

1.232

2.061

2.029

2.188

2.054

ppm (t1) 11.0 10.0 9.0 8.0 7.0 6.0 5.0 4.0 3.0 2.0 1.0 0.0