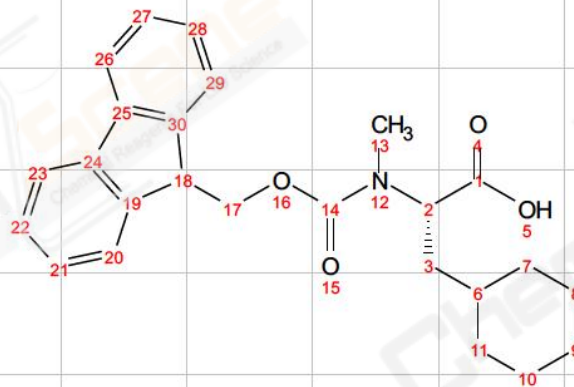


L11803050022-CDCl3-180305_1.fid
 L11803050022-CDCl3-180305



¹H NMR (600 MHz, Chloroform-*d*) δ 7.76 (dd, *J* = 17.2, 7.3 Hz, 2H), 7.63 – 7.52 (m, 2H), 7.44 – 7.34 (m, 2H), 7.30 (dt, *J* = 23.0, 8.8 Hz, 2H), 4.93 (dd, *J* = 10.9, 4.9 Hz, 1H), 4.54 – 4.39 (m, 2H), 4.32 – 4.22 (m, 1H), 2.87 (d, *J* = 26.4 Hz, 3H), 1.85 – 1.51 (m, 7H), 1.19 (ddd, *J* = 49.9, 24.2, 11.7 Hz, 4H), 1.04 – 0.78 (m, 2H).

