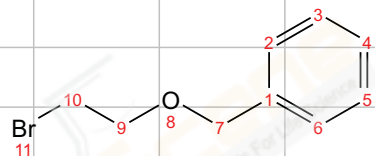


1021713-CDCl<sub>3</sub>-170613

<sup>1</sup>H NMR (600 MHz, CDCl<sub>3</sub>) δ 7.38 – 7.31 (m, 4H), 7.31 – 7.25 (m, 1H), 4.57 (s, 2H), 3.77 (t, *J* = 6.2 Hz, 2H), 3.48 (t, *J* = 6.2 Hz, 2H).

