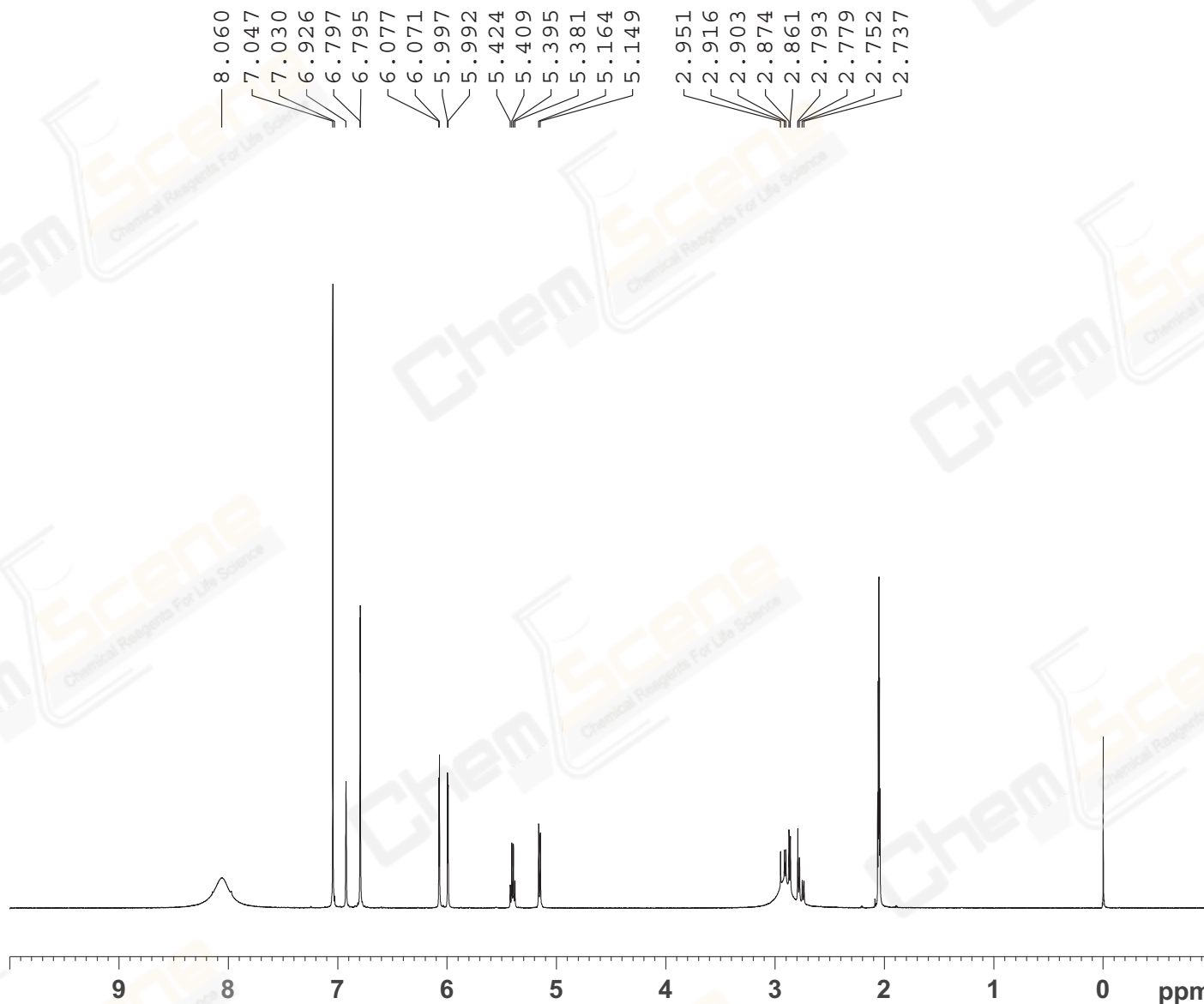


Catalog No: CS-3758 Batch#55378



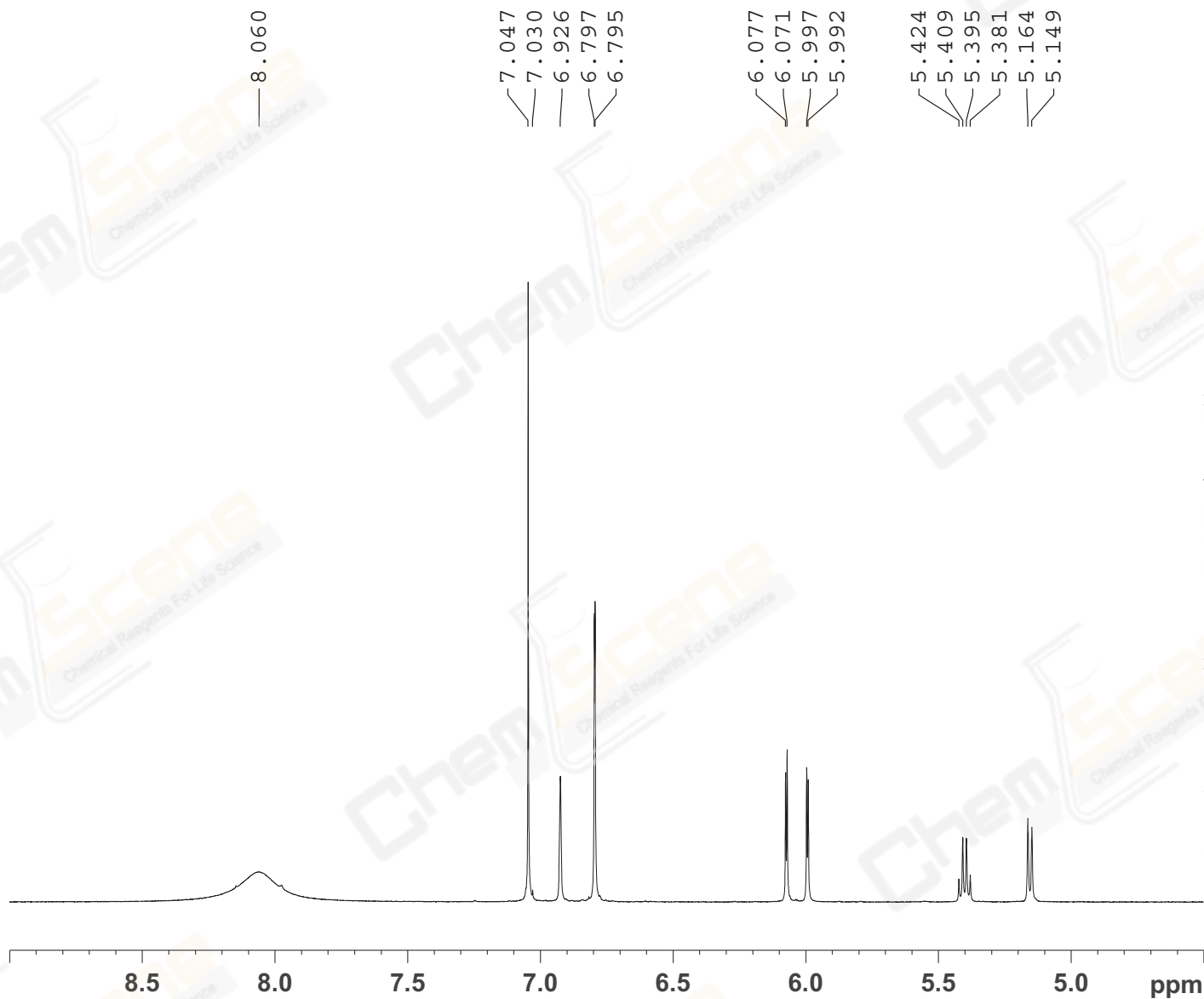
EXPNO 6
PROCNO 1

F2 - Acquisition Parameters
Date_ 20180302
Time 11.14
INSTRUM spect
PROBHD 5 mm PABBO BB/
PULPROG zg30
TD 65536
SOLVENT Acetone
NS 4
DS 2
SWH 8012.820 Hz
FIDRES 0.122266 Hz
AQ 4.0894465 sec
RG 202.5
DW 62.400 usec
DE 6.50 usec
TE 301.1 K
D1 1.00000000 sec
TD0 1

===== CHANNEL f1 =====
SFO1 400.1324710 MHz
NUC1 1H
P1 14.79 usec
PLW1 11.50800037 W

F2 - Processing parameters
SI 65536
SF 400.1300060 MHz
WDW EM
SSB 0
LB 0.30 Hz
GB 0
PC 1.00
SR 6.02 Hz

Catalog No: CS-3758 Batch#55378



EXPNO 6
PROCNO 1

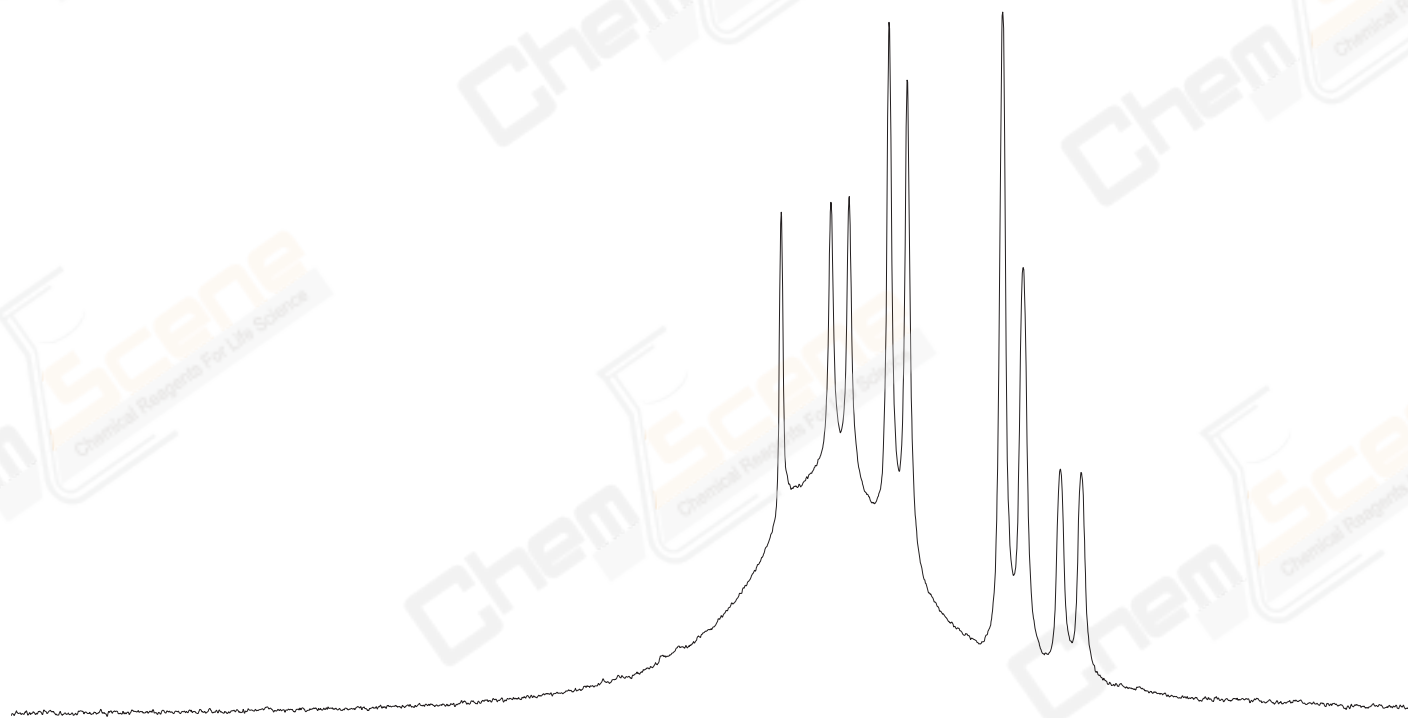
F2 - Acquisition Parameters
Date_ 20180302
Time 11.14
INSTRUM spect
PROBHD 5 mm PABBO BB/
PULPROG zg30
TD 65536
SOLVENT Acetone
NS 4
DS 2
SWH 8012.820 Hz
FIDRES 0.122266 Hz
AQ 4.0894465 sec
RG 202.5
DW 62.400 usec
DE 6.50 usec
TE 301.1 K
D1 1.00000000 sec
TD0 1

==== CHANNEL f1 =====
SFO1 400.1324710 MHz
NUC1 1H
P1 14.79 usec
PLW1 11.50800037 W

F2 - Processing parameters
SI 65536
SF 400.1300060 MHz
WDW EM
SSB 0
LB 0.30 Hz
GB 0
PC 1.00
SR 6.02 Hz



— 2.951
 — 2.916
 — 2.903
 — 2.874
 — 2.861
 — 2.793
 — 2.779
 — 2.752
 — 2.737



EXPNO 6
 PROCNO 1
 F2 - Acquisition Parameters
 Date_ 20180302
 Time 11.14
 INSTRUM spect
 PROBHD 5 mm PABBO BB/
 PULPROG zg30
 TD 65536
 SOLVENT Acetone
 NS 4
 DS 2
 SWH 8012.820 Hz
 FIDRES 0.122266 Hz
 AQ 4.0894465 sec
 RG 202.5
 DW 62.400 usec
 DE 6.50 usec
 TE 301.1 K
 D1 1.00000000 sec
 TD0 1

==== CHANNEL f1 =====
 SFO1 400.1324710 MHz
 NUC1 1H
 P1 14.79 usec
 PLW1 11.50800037 W

F2 - Processing parameters
 SI 65536
 SF 400.130060 MHz
 WDW EM
 SSB 0
 LB 0.30 Hz
 GB 0
 PC 1.00
 SR 6.02 Hz



3.39
 1.69