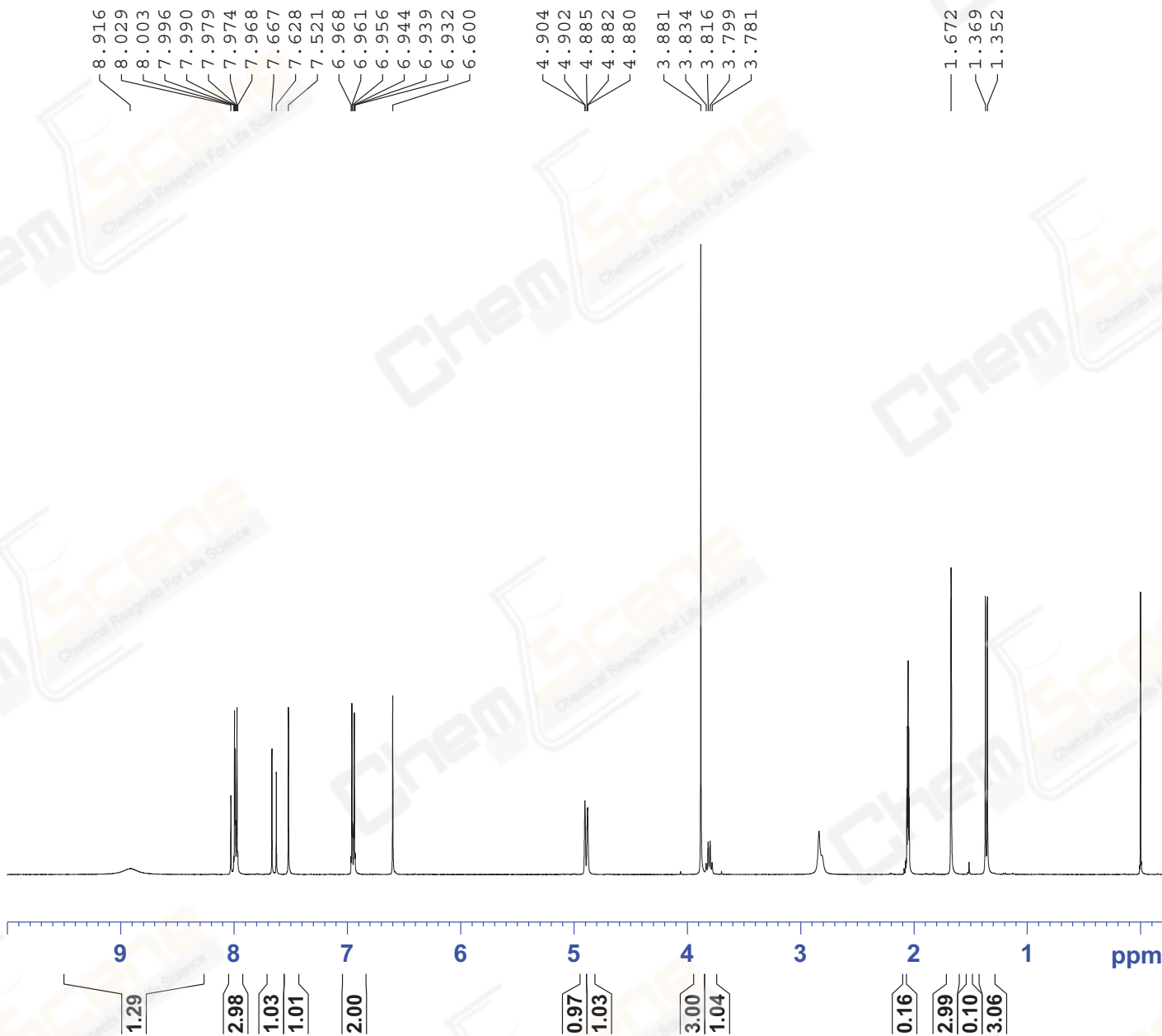


Catalog No: CS-0032374 Batch#59147



EXPNO 1
PROCNO 1

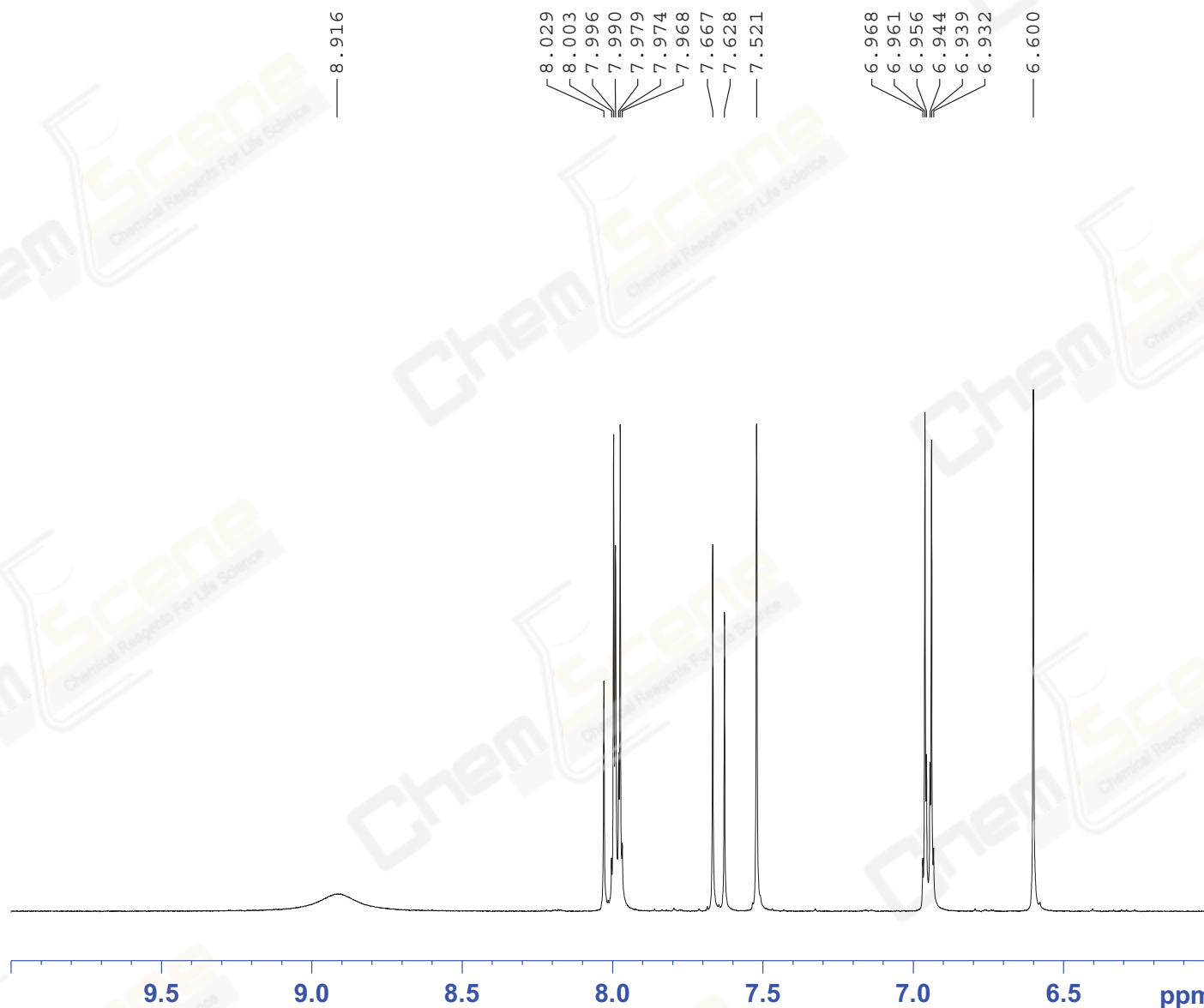
F2 - Acquisition Parameters
Date_ 20170508
Time 10.22
INSTRUM spect
PROBHD 5 mm PABBO BB/
PULPROG zg30
TD 65536
SOLVENT Acetone
NS 16
DS 2
SWH 8012.820 Hz
FIDRES 0.122266 Hz
AQ 4.0894465 sec
RG 202.5
DW 62.400 usec
DE 6.50 usec
TE 301.2 K
D1 1.0000000 sec
TD0 1

===== CHANNEL f1 =====
SFO1 400.1324710 MHz
NUC1 1H
P1 14.79 usec
PLW1 11.50800037 W

F2 - Processing parameters
SI 65536
SF 400.1300063 MHz
WDW EM
SSB 0
LB 0.30 Hz
GB 0
PC 1.00
SR 6.35 Hz

Catalog No:

CS-0032374 Batch#59147



EXPNO 1
PROCNO 1

F2 - Acquisition Parameters

Date_ 20170508
Time 10.22
INSTRUM spect
PROBHD 5 mm PABBO BB/
PULPROG zg30
TD 65536
SOLVENT Acetone
NS 16
DS 2
SWH 8012.820 Hz
FIDRES 0.122266 Hz
AQ 4.0894465 sec
RG 202.5
DW 62.400 usec
DE 6.50 usec
TE 301.2 K
D1 1.0000000 sec
TD0 1

===== CHANNEL f1 =====
SFO1 400.1324710 MHz
NUC1 1H
P1 14.79 usec
PLW1 11.50800037 W

F2 - Processing parameters

SI 65536
SF 400.1300063 MHz
WDW EM
SSB 0
LB 0.30 Hz
GB 0
PC 1.00
SR 6.35 Hz

Catalog No: CS-0032374 Batch#59147

4.904
4.902
4.885
4.882
4.880

3.881
3.834
3.816
3.799
3.781



EXPNO 1
PROCNO 1

F2 - Acquisition Parameters
Date_ 20170508
Time 10.22
INSTRUM spect
PROBHD 5 mm PABBO BB/
PULPROG zg30
TD 65536
SOLVENT Acetone
NS 16
DS 2
SWH 8012.820 Hz
FIDRES 0.122266 Hz
AQ 4.0894465 sec
RG 202.5
DW 62.400 usec
DE 6.50 usec
TE 301.2 K
D1 1.0000000 sec
TD0 1

===== CHANNEL f1 =====
SFO1 400.1324710 MHz
NUC1 1H
P1 14.79 usec
PLW1 11.50800037 W

F2 - Processing parameters
SI 65536
SF 400.1300063 MHz
WDW EM
SSB 0
LB 0.30 Hz
GB 0
PC 1.00
SR 6.35 Hz

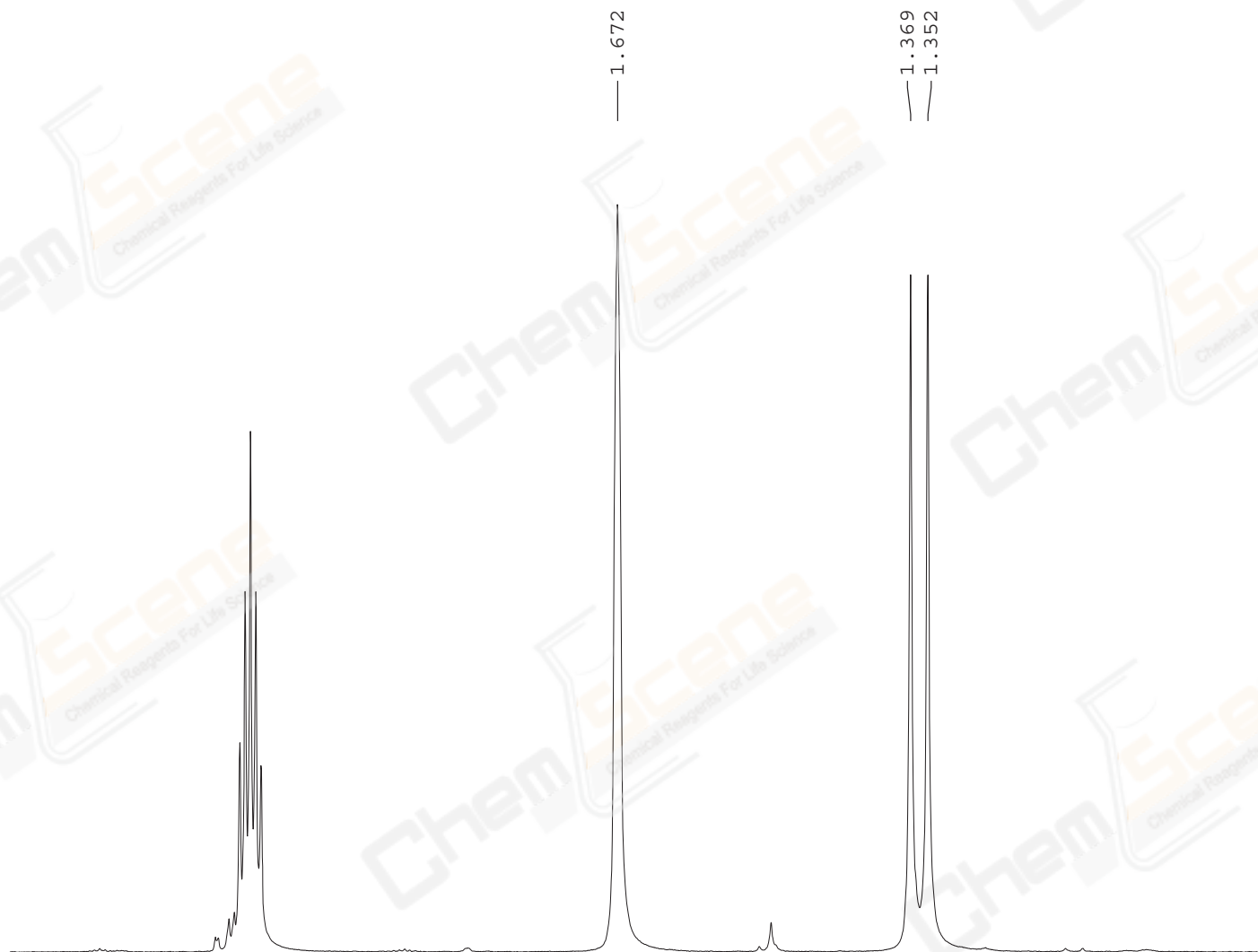


0.97
1.03

3.00
1.04

Catalog No:

CS-0032374 Batch#59147



EXPNO 1
PROCNO 1

F2 - Acquisition Parameters
Date_ 20170508
Time 10.22
INSTRUM spect
PROBHD 5 mm PABBO BB/
PULPROG zg30
TD 65536
SOLVENT Acetone
NS 16
DS 2
SWH 8012.820 Hz
FIDRES 0.122266 Hz
AQ 4.0894465 sec
RG 202.5
DW 62.400 usec
DE 6.50 usec
TE 301.2 K
D1 1.0000000 sec
TD0 1

===== CHANNEL f1 =====
SFO1 400.1324710 MHz
NUC1 1H
P1 14.79 usec
PLW1 11.50800037 W

F2 - Processing parameters
SI 65536
SF 400.1300063 MHz
WDW EM
SSB 0
LB 0.30 Hz
GB 0
PC 1.00
SR 6.35 Hz

