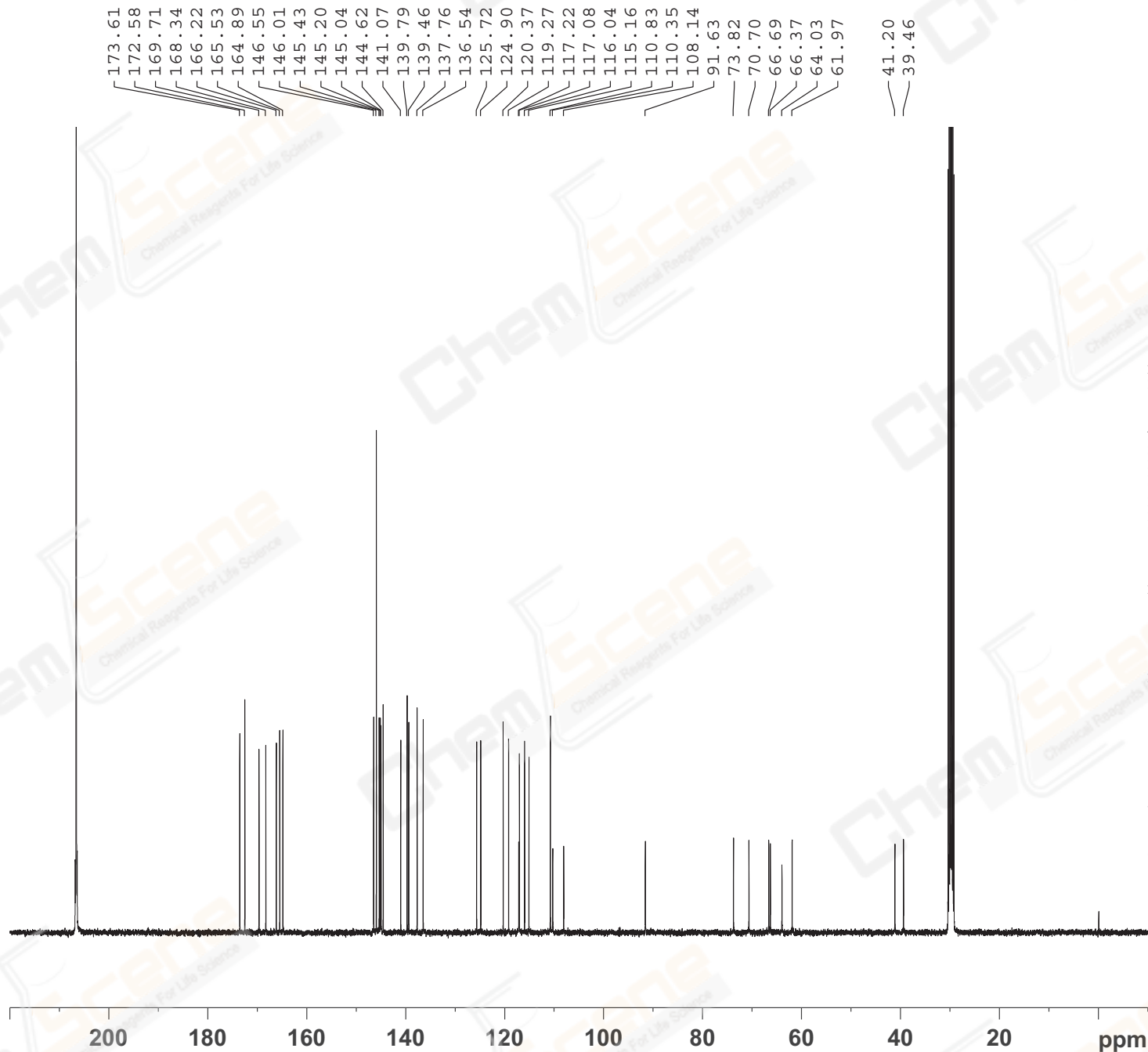


Catalog No: CS-5820 Batch#63214



EXPNO 1
PROCNO 1

F2 - Acquisition Parameters
Date_ 20171126
Time_ 3.02
INSTRUM spect
PROBHD 5 mm PABBO BB/
PULPROG zgig30
TD 65536
SOLVENT Acetone
NS 6000
DS 4
SWH 24038.461 Hz
FIDRES 0.366798 Hz
AQ 1.3631488 sec
RG 202.5
DW 20.800 usec
DE 6.50 usec
TE 301.2 K
D1 2.00000000 sec
D11 0.03000000 sec
TD0 1

==== CHANNEL f1 =====
SFO1 100.6228298 MHz
NUC1 13C
P1 10.13 usec
PLW1 51.00000000 W

==== CHANNEL f2 =====
SFO2 400.1316005 MHz
NUC2 1H
CPDPRG[2] waltz16
PCPD2 90.00 usec
PLW2 11.50800037 W
PLW12 0.31077999 W

F2 - Processing parameters
SI 262144
SF 100.6126807 MHz
WDW EM
SSB 0
LB 1.00 Hz
GB 0
PC 1.40
SR -88.30 Hz

Catalog No: CS-5820 Batch#63214

— 173.61

— 172.58

— 169.71

— 168.34

— 166.22

— 165.53

— 164.89



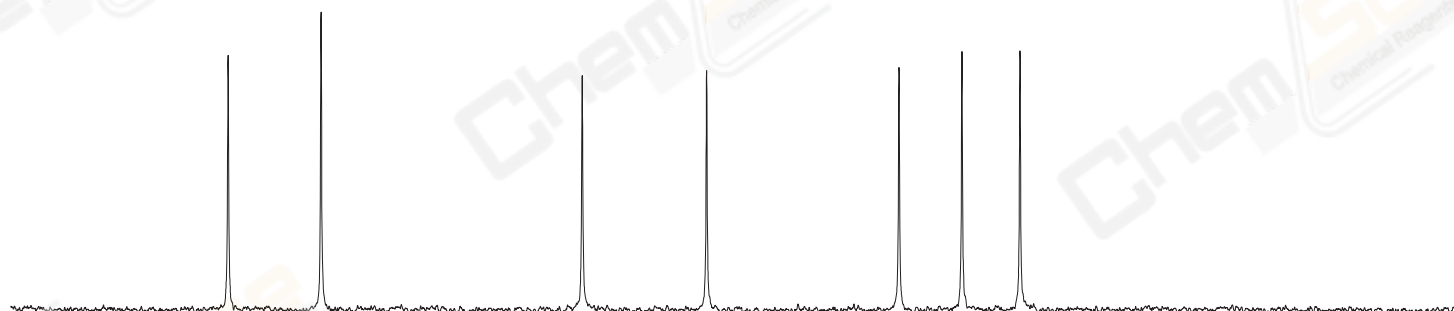
EXPNO 1
PROCNO 1

F2 - Acquisition Parameters
Date_ 20171126
Time_ 3.02
INSTRUM spect
PROBHD 5 mm PABBO BB/
PULPROG zgig30
TD 65536
SOLVENT Acetone
NS 6000
DS 4
SWH 24038.461 Hz
FIDRES 0.366798 Hz
AQ 1.3631488 sec
RG 202.5
DW 20.800 usec
DE 6.50 usec
TE 301.2 K
D1 2.00000000 sec
D11 0.03000000 sec
TDO 1

==== CHANNEL f1 =====
SFO1 100.6228298 MHz
NUC1 13C
P1 10.13 usec
PLW1 51.00000000 W

==== CHANNEL f2 =====
SFO2 400.1316005 MHz
NUC2 1H
CPDPRG[2] waltz16
PCPD2 90.00 usec
PLW2 11.50800037 W
PLW12 0.31077999 W

F2 - Processing parameters
SI 262144
SF 100.6126807 MHz
WDW EM
SSB 0
LB 1.00 Hz
GB 0
PC 1.40
SR -88.30 Hz



175 174 173 172 171 170 169 168 167 166 165 164 163 162 ppm

Catalog No: CS-5820 Batch#63214

— 146.55
— 146.01
— 145.43
— 145.20
— 145.04
— 144.62

— 141.07

— 139.79
— 139.46

— 137.76

— 136.54



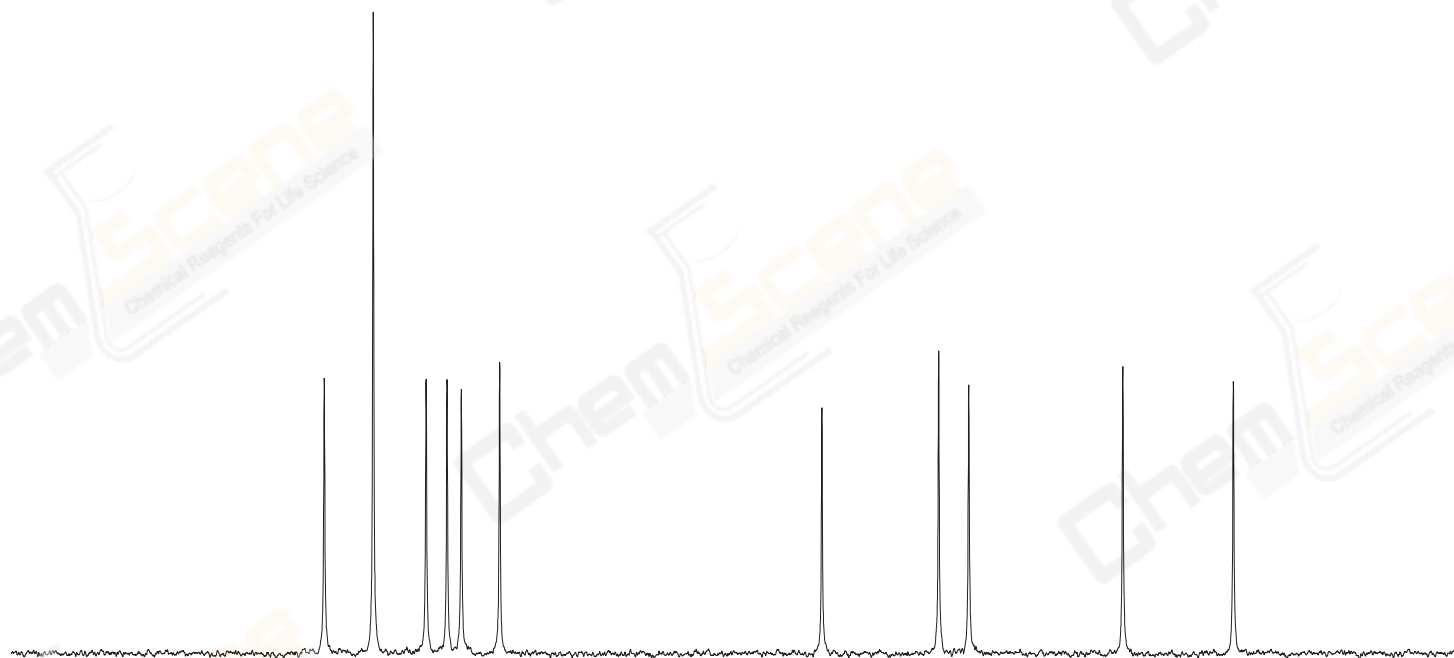
EXPNO 1
PROCNO 1

F2 - Acquisition Parameters
Date_ 20171126
Time_ 3.02
INSTRUM spect
PROBHD 5 mm PABBO BB/
PULPROG zgig30
TD 65536
SOLVENT Acetone
NS 6000
DS 4
SWH 24038.461 Hz
FIDRES 0.366798 Hz
AQ 1.3631488 sec
RG 202.5
DW 20.800 usec
DE 6.50 usec
TE 301.2 K
D1 2.00000000 sec
D11 0.03000000 sec
TD0 1

==== CHANNEL f1 =====
SFO1 100.6228298 MHz
NUC1 13C
P1 10.13 usec
PLW1 51.00000000 W

==== CHANNEL f2 =====
SFO2 400.1316005 MHz
NUC2 1H
CPDPRG[2] waltz16
PCPD2 90.00 usec
PLW2 11.50800037 W
PLW12 0.31077999 W

F2 - Processing parameters
SI 262144
SF 100.6126807 MHz
WDW EM
SSB 0
LB 1.00 Hz
GB 0
PC 1.40
SR -88.30 Hz



149 148 147 146 145 144 143 142 141 140 139 138 137 136 ppm

Catalog No: CS-5820 Batch#63214

—125.72

—124.90

—120.37

—119.27

—117.22

—117.08

—116.04

—115.16

—110.83

—110.35

—108.14



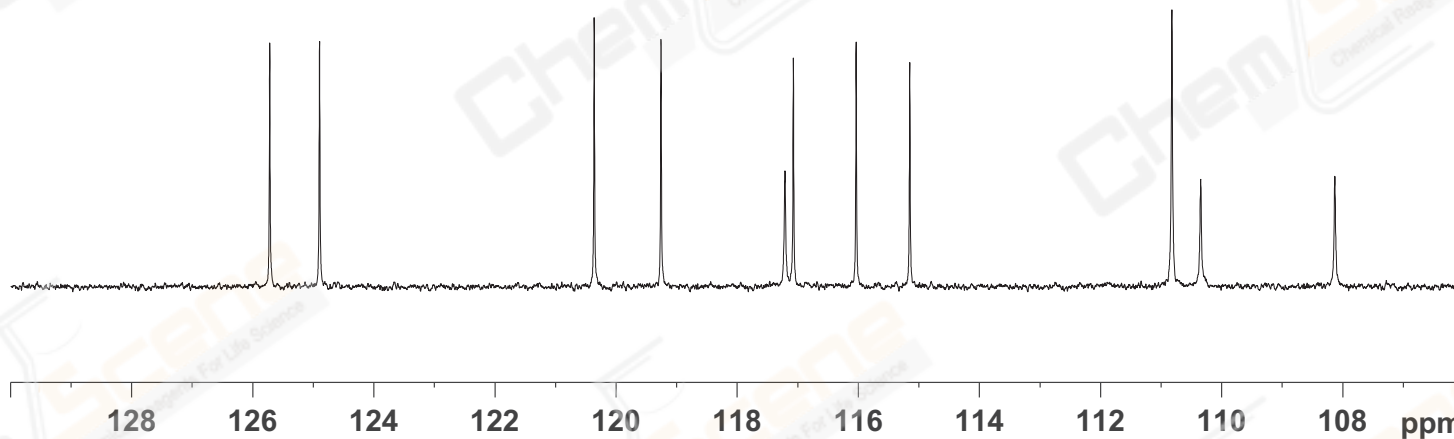
EXPNO 1
PROCNO 1

F2 - Acquisition Parameters
Date_ 20171126
Time_ 3.02
INSTRUM spect
PROBHD 5 mm PABBO BB/
PULPROG zgig30
TD 65536
SOLVENT Acetone
NS 6000
DS 4
SWH 24038.461 Hz
FIDRES 0.366798 Hz
AQ 1.3631488 sec
RG 202.5
DW 20.800 usec
DE 6.50 usec
TE 301.2 K
D1 2.00000000 sec
D11 0.03000000 sec
TD0 1

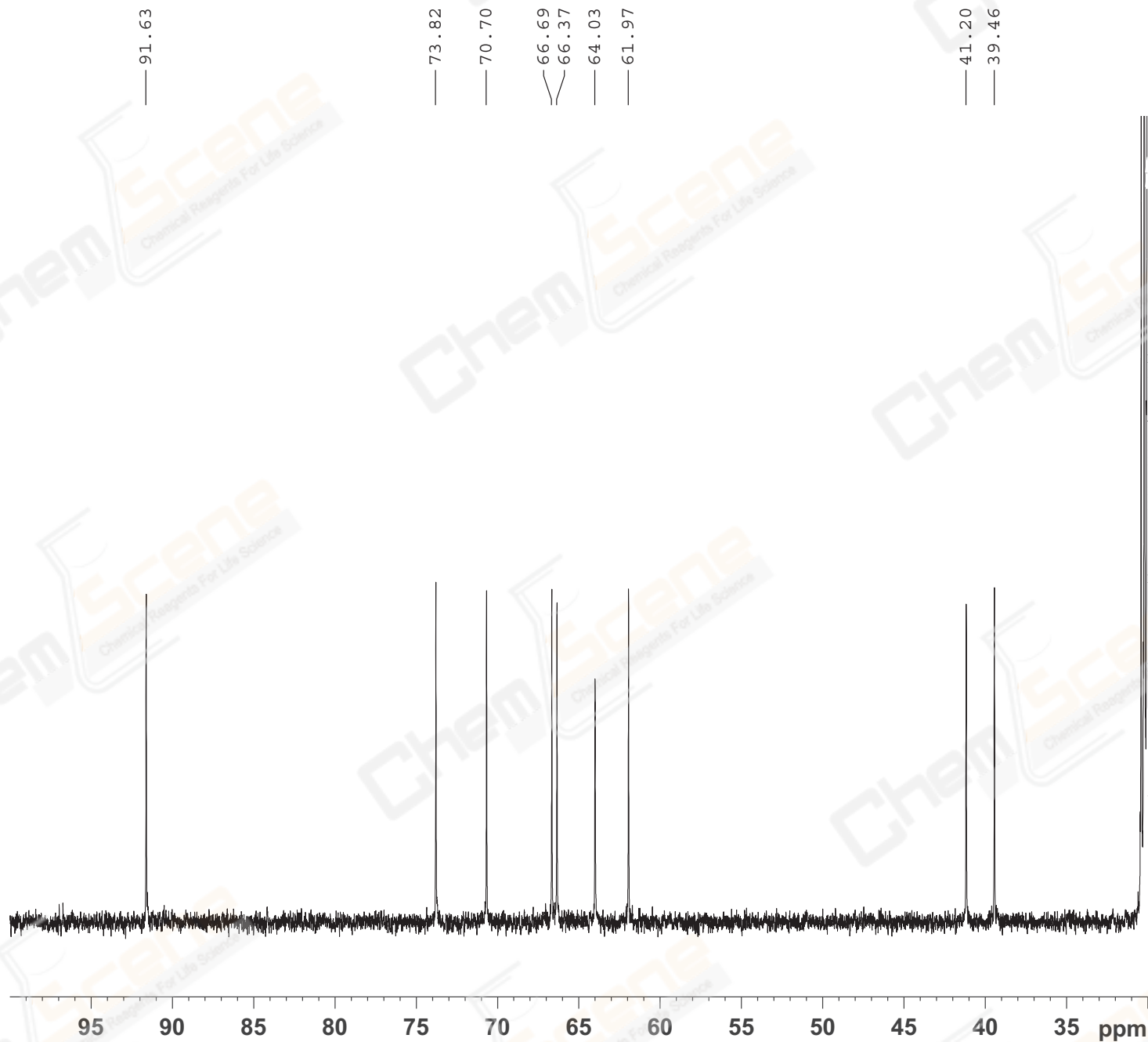
==== CHANNEL f1 =====
SFO1 100.6228298 MHz
NUC1 13C
P1 10.13 usec
PLW1 51.00000000 W

==== CHANNEL f2 =====
SFO2 400.1316005 MHz
NUC2 1H
CPDPRG[2] waltz16
PCPD2 90.00 usec
PLW2 11.50800037 W
PLW12 0.31077999 W

F2 - Processing parameters
SI 262144
SF 100.6126807 MHz
WDW EM
SSB 0
LB 1.00 Hz
GB 0
PC 1.40
SR -88.30 Hz



Catalog No: CS-5820 Batch#63214



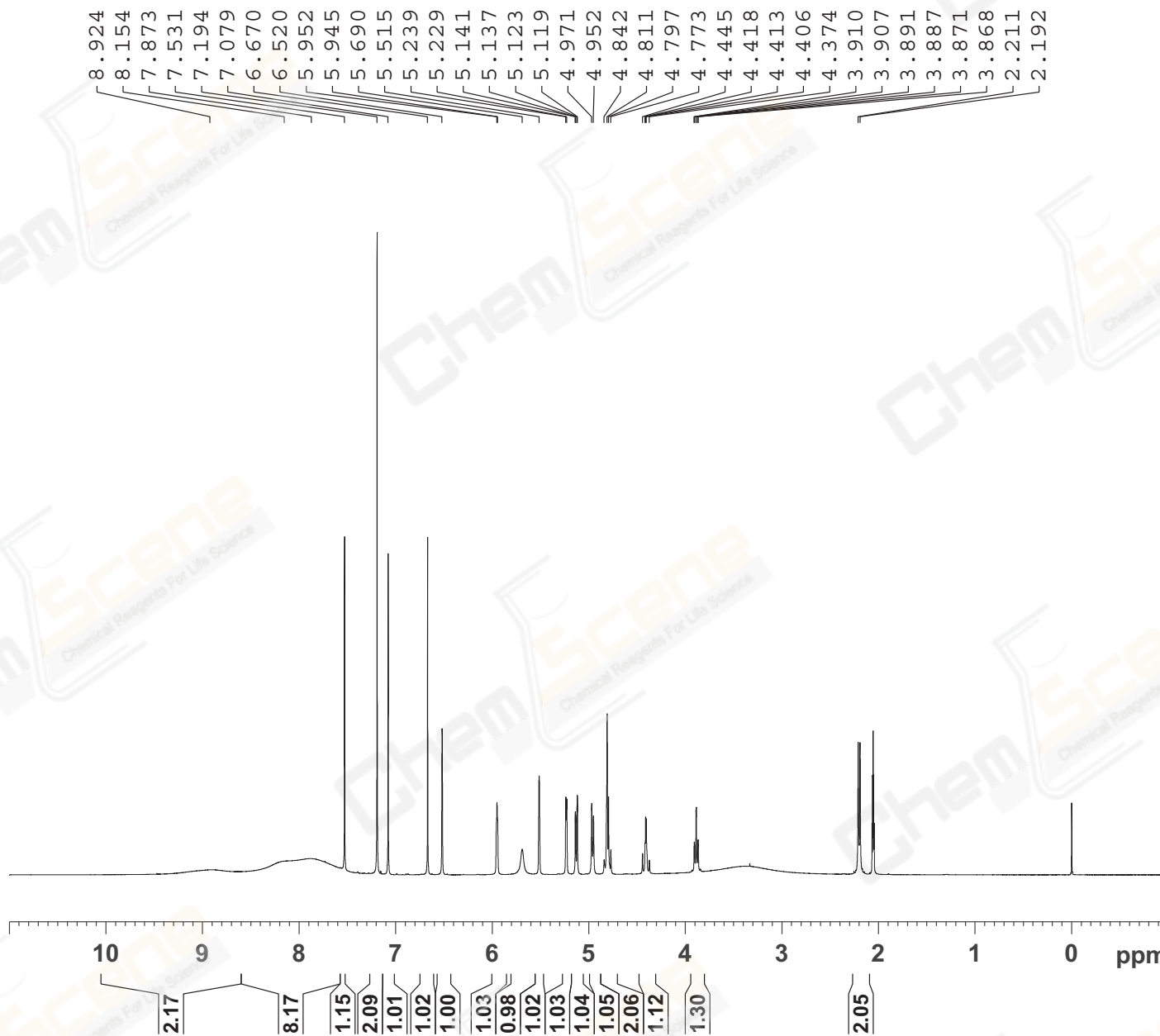
```
EXPNO 1
PROCNO 1

F2 - Acquisition Parameters
Date_ 20171126
Time_ 3.02
INSTRUM spect
PROBHD 5 mm PABBO BB/
PULPROG zgig30
TD 65536
SOLVENT Acetone
NS 6000
DS 4
SWH 24038.461 Hz
FIDRES 0.366798 Hz
AQ 1.3631488 sec
RG 202.5
DW 20.800 usec
DE 6.50 usec
TE 301.2 K
D1 2.00000000 sec
D11 0.03000000 sec
TD0 1

===== CHANNEL f1 =====
SFO1 100.6228298 MHz
NUC1 13C
P1 10.13 usec
PLW1 51.00000000 W

===== CHANNEL f2 =====
SFO2 400.1316005 MHz
NUC2 1H
CPDPRG[2] waltz16
PCPD2 90.00 usec
PLW2 11.50800037 W
PLW12 0.31077999 W

F2 - Processing parameters
SI 262144
SF 100.6126807 MHz
WDW EM
SSB 0
LB 1.00 Hz
GB 0
PC 1.40
SR -88.30 Hz
```



```

EXPNO           1
PROCNO          1

F2 - Acquisition Parameters
Date_           20171125
Time_           21.21
INSTRUM         spect
PROBHD          5 mm PABBO BB/
PULPROG         zg30
TD              65536
SOLVENT         Acetone
NS              16
DS              2
SWH             8012.820 Hz
FIDRES          0.122266 Hz
AQ              4.0894465 sec
RG              71.24
DW              62.400 usec
DE              6.50 usec
TE              301.2 K
D1              1.00000000 sec
TD0             1
    
```

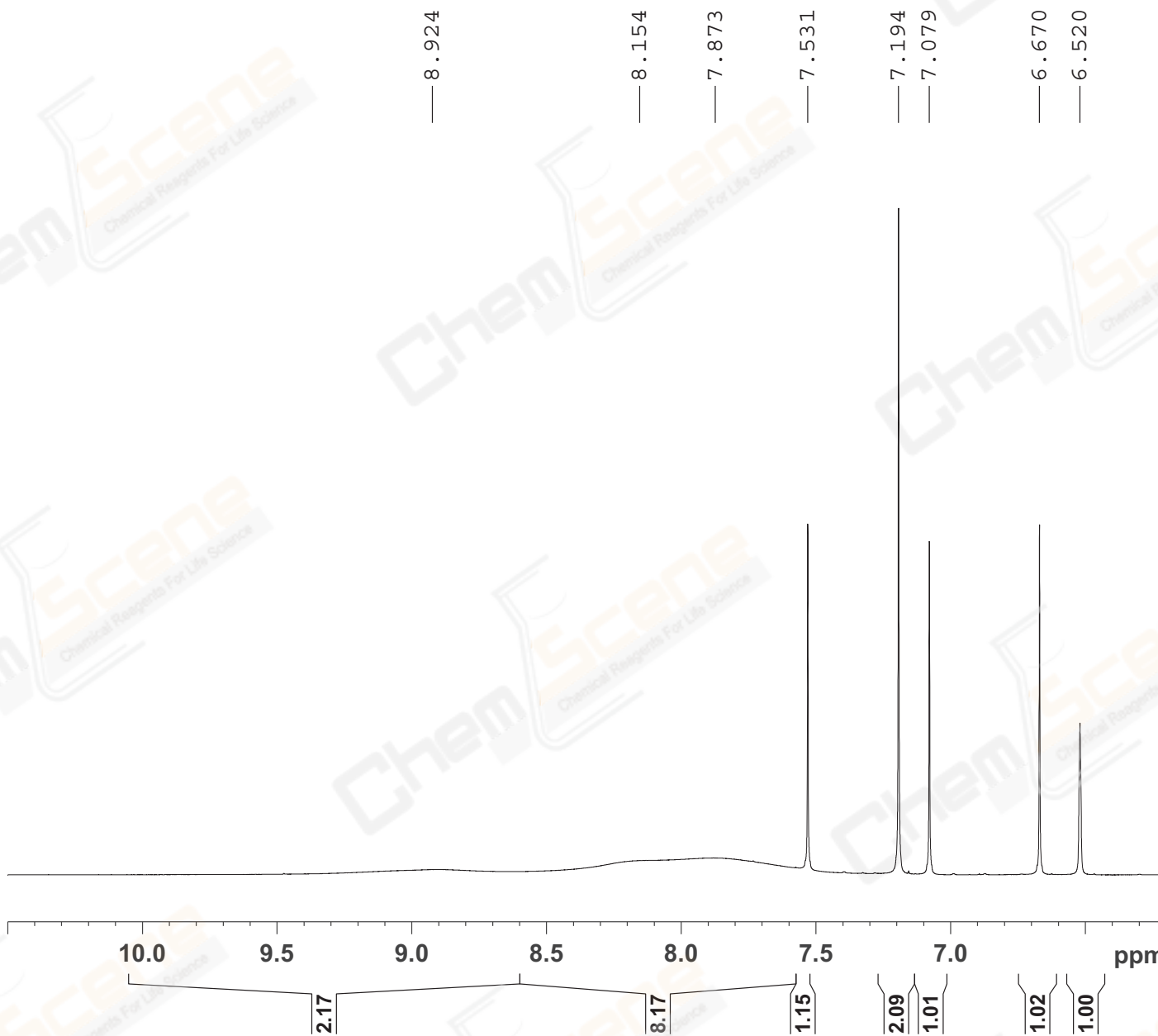
```

===== CHANNEL f1 =====
SFO1            400.1324710 MHz
NUC1            1H
P1              14.79 usec
PLW1            11.50800037 W
    
```

```

F2 - Processing parameters
SI              262144
SF              400.1300042 MHz
WDW             EM
SSB             0
LB              0.30 Hz
GB              0
PC              1.00
SR              4.25 Hz
    
```

Catalog No: CS-5820 Batch#63214

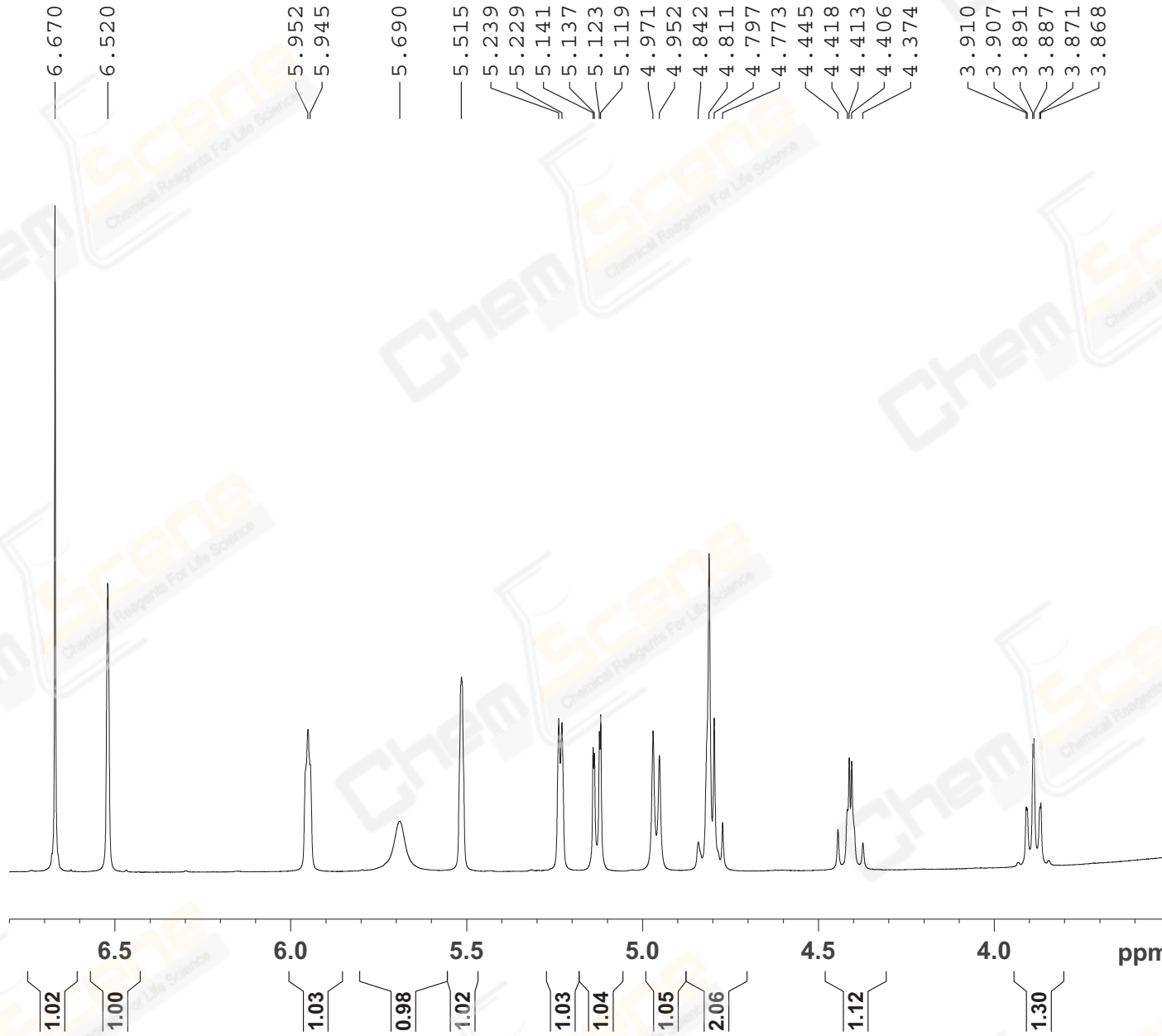


EXPNO 1
PROCNO 1

F2 - Acquisition Parameters
Date_ 20171125
Time_ 21.21
INSTRUM spect
PROBHD 5 mm PABBO BB/
PULPROG zg30
TD 65536
SOLVENT Acetone
NS 16
DS 2
SWH 8012.820 Hz
FIDRES 0.122266 Hz
AQ 4.0894465 sec
RG 71.24
DW 62.400 usec
DE 6.50 usec
TE 301.2 K
D1 1.00000000 sec
TD0 1

==== CHANNEL f1 =====
SF01 400.1324710 MHz
NUC1 1H
P1 14.79 usec
PLW1 11.50800037 W

F2 - Processing parameters
SI 262144
SF 400.1300042 MHz
WDW EM
SSB 0
LB 0.30 Hz
GB 0
PC 1.00
SR 4.25 Hz



```

EXPNO           1
PROCNO          1

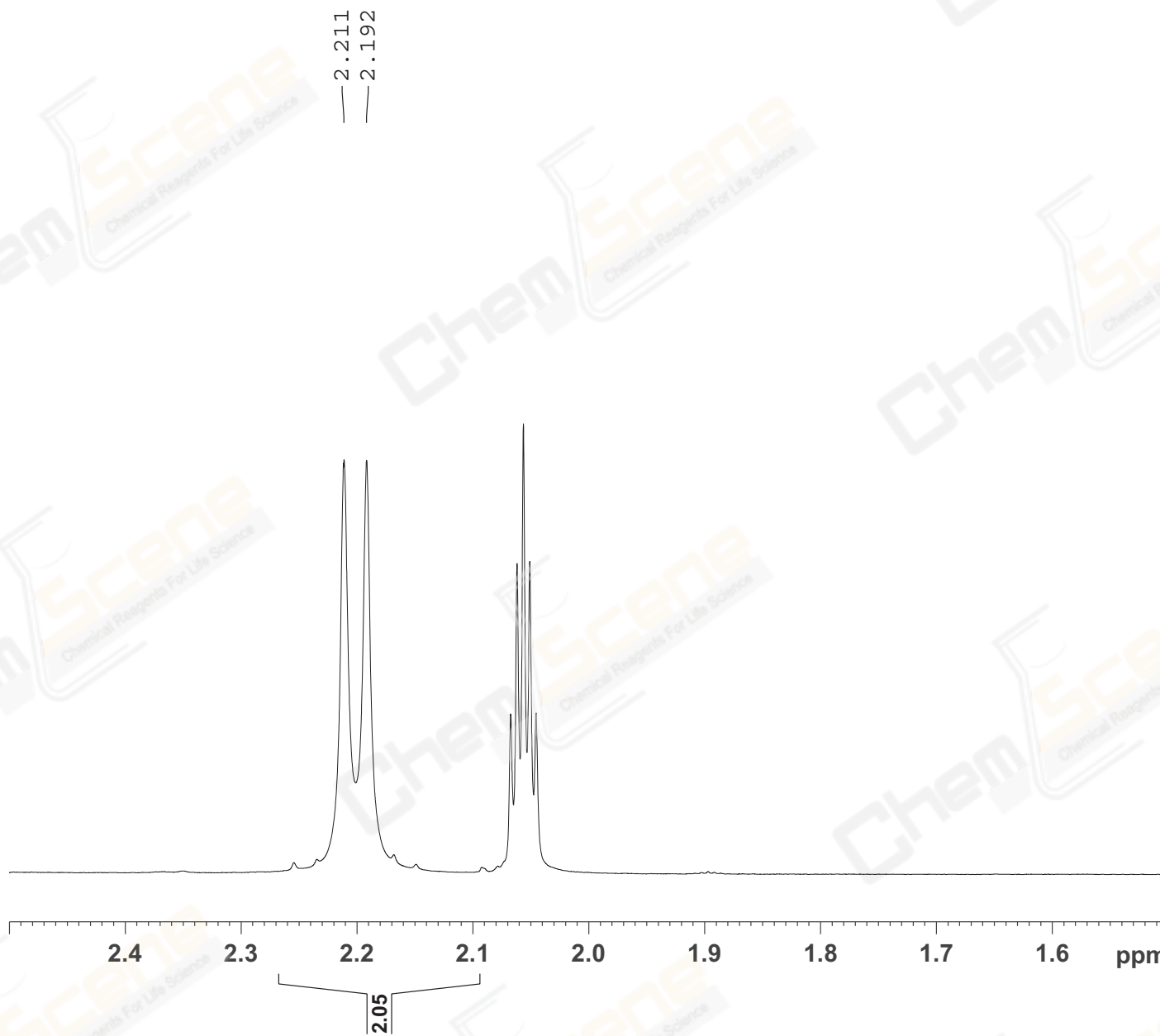
F2 - Acquisition Parameters
Date_           20171125
Time            21.21
INSTRUM        spect
PROBHD         5 mm PABBO BB/
PULPROG        zg30
TD             65536
SOLVENT        Acetone
NS             16
DS             2
SWH            8012.820 Hz
FIDRES         0.122266 Hz
AQ             4.0894465 sec
RG             71.24
DW             62.400 usec
DE             6.50 usec
TE             301.2 K
D1             1.00000000 sec
TD0            1
    
```

```

===== CHANNEL f1 =====
SFO1           400.1324710 MHz
NUC1           1H
P1             14.79 usec
PLW1           11.50800037 W
    
```

```

F2 - Processing parameters
SI             262144
SF             400.1300042 MHz
WDW            EM
SSB            0
LB             0.30 Hz
GB             0
PC             1.00
SR             4.25 Hz
    
```

EXPNO 1
PROCNO 1

F2 - Acquisition Parameters

Date_ 20171125
Time_ 21.21
INSTRUM spect
PROBHD 5 mm PABBO BB/
PULPROG zg30
TD 65536
SOLVENT Acetone
NS 16
DS 2
SWH 8012.820 Hz
FIDRES 0.122266 Hz
AQ 4.0894465 sec
RG 71.24
DW 62.400 usec
DE 6.50 usec
TE 301.2 K
D1 1.00000000 sec
TD0 1

==== CHANNEL f1 =====
SF01 400.1324710 MHz
NUC1 1H
P1 14.79 usec
PLW1 11.50800037 W

F2 - Processing parameters
SI 262144
SF 400.1300042 MHz
WDW EM
SSB 0
LB 0.30 Hz
GB 0
PC 1.00
SR 4.25 Hz