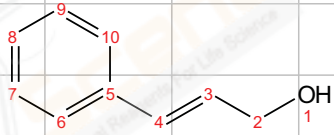


LJC202010200116  
single\_pulse



<sup>1</sup>H NMR (400 MHz, Chloroform-*d*) δ 7.43 – 7.37 (m, 2H), 7.32 (ddd, *J* = 7.7, 6.4, 1.3 Hz, 2H), 7.25 (d, *J* = 2.1 Hz, 1H), 6.63 (dd, *J* = 15.9, 1.6 Hz, 1H), 6.43 – 6.33 (m, 1H), 4.33 (dd, *J* = 5.8, 1.6 Hz, 2H), 1.50 (s, 1H).

