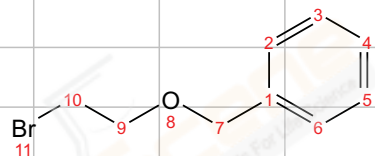


1021713-CDCl₃-170613

¹H NMR (600 MHz, CDCl₃) δ 7.38 – 7.31 (m, 4H), 7.31 – 7.25 (m, 1H), 4.57 (s, 2H), 3.77 (t, *J* = 6.2 Hz, 2H), 3.48 (t, *J* = 6.2 Hz, 2H).

