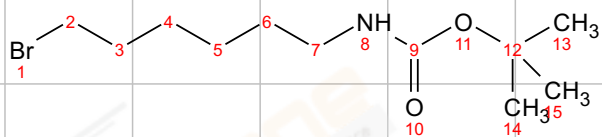


CAS NO. : 142356-33-0 CDCL₃

¹H NMR (400 MHz, CDCl₃) δ 4.52 (s, 1H), 3.40 (t, *J* = 6.8 Hz, 2H), 3.11 (dd, *J* = 12.5, 6.2 Hz, 2H), 1.90 – 1.80 (m, 2H), 1.53 – 1.46 (m, 4H), 1.44 (s, 9H), 1.34 (tt, *J* = 9.0, 3.2 Hz, 2H).

