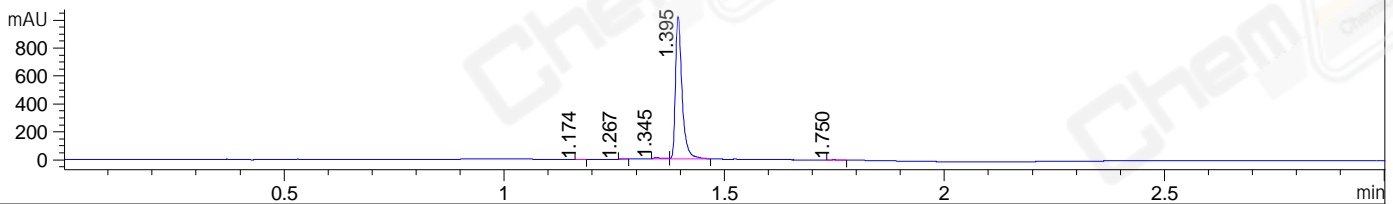
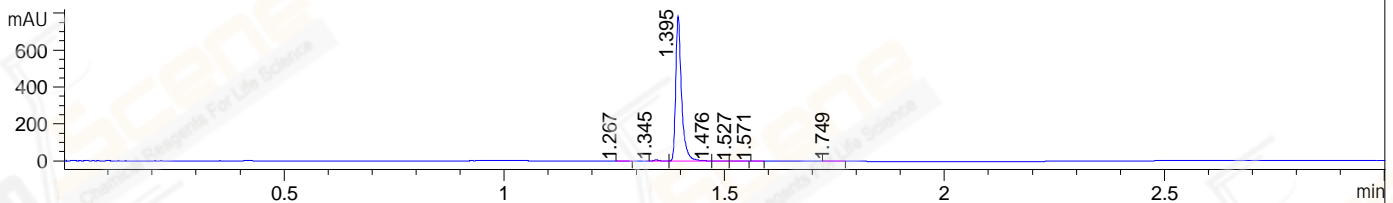


File ..DATA\2019\20190720\650\CPK2019-717-00814-.D Tgt Mass (CHM):
 Injection Date : 20 Jul 19 2:40 pm +0800 Seq. Line : 76
 Sample Name : CPK2019-717-00814 Location : P2-A-03
 Acq. Operator : ZJ_1432 Inj : 1
 Spec. Reported : MS Integration Inj Volume : 0.4 ul
 Acq. Method : D:\Chem32\1\data\2019\20190720\650\1-POS-3MIN.M
 Analysis Method : D:\CHEM32\1\DATA\2019\20190720\650\1-POS-3MIN.M
 Catalog No : CS-0310 Batch#00814
 Method Info : Mobile Phase: A: water(0.01%TFA) B:ACN(0.01%TFA)
 Gradient: 5% to 95%B within 1.3 min
 Flow Rate :1.8ml/min
 Column :SunFire C18, 4.6*50mm,3.5um A-RP-433
 Oven Temperature : 45□

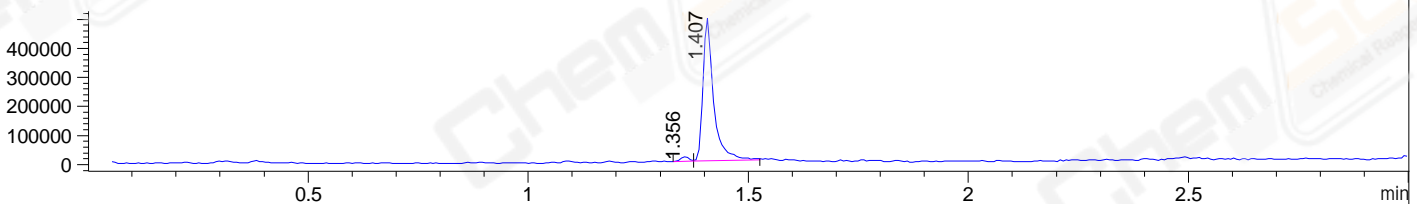
DAD1 B, Sig=214,4 Ref=off



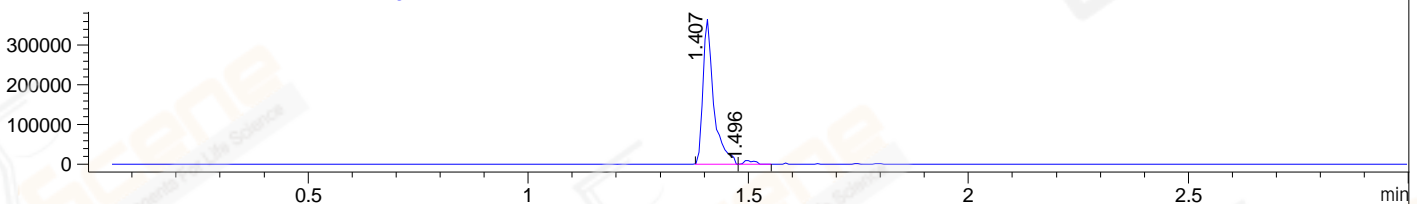
DAD1 C, Sig=254,4 Ref=off



MSD1 TIC, MS File ES-API, Pos, Scan, Frag: 70



Ion 515.4867, MSD1 515.4867, Target Mass 514.4867 +H Positive, EIC=515.19:516.19



Integration Results for DAD1 B, Sig=214,4 Ref=off

RetTim	Width	Area	Height	Area%	MS (+)
1.17	0.02	1.37	1.46	0.13	ND
1.27	0.01	1.25	1.78	0.12	433
1.35	0.02	10.00	9.32	0.93	461
1.40	0.02	1062.15	1021.67	98.59	515
1.75	0.02	2.52	2.50	0.23	515

Integration Results for DAD1 C, Sig=254,4 Ref=off

RetTim	Width	Area	Height	Area%	MS (+)
1.27	0.01	0.99	1.24	0.13	433
1.35	0.01	5.14	5.85	0.70	461
1.40	0.02	725.03	786.26	98.53	515
1.48	0.02	1.72	1.29	0.23	515
1.53	0.02	0.95	0.72	0.13	515
1.57	0.01	0.54	0.66	0.07	515
1.75	0.02	1.49	1.47	0.20	515

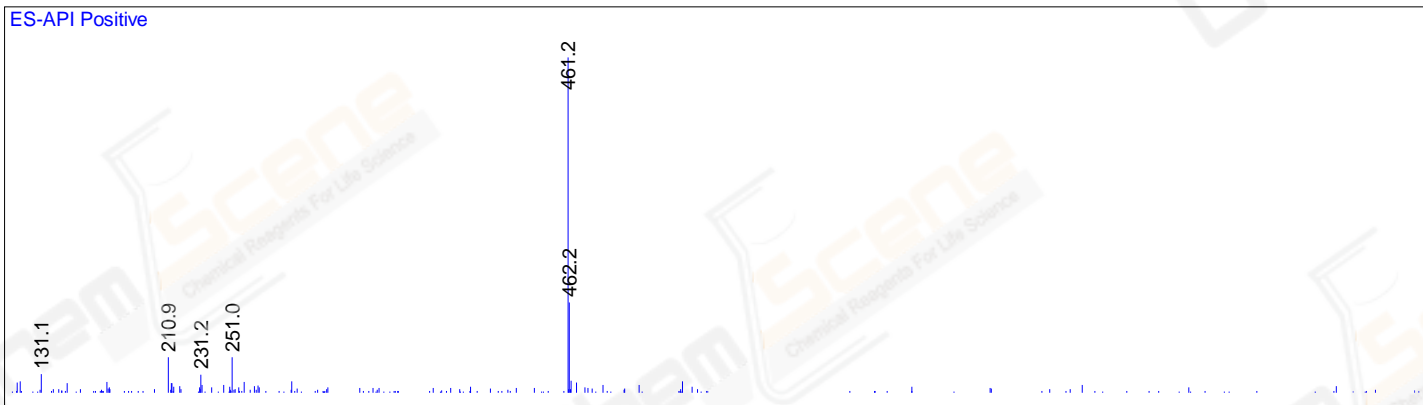
Integration Results for MSD1 TIC, MS File

RetTim	Width	Area	Height	Area%	MS (+)
1.36	0.02	21996.40	16512.96	2.55	461
1.41	0.03	840898.94	493957.59	97.45	515

Ret. Time: 1.36

<<<< POSITIVE SPECTRA >>>>

ES-API Positive



Ret. Time: 1.41

ES-API Positive

