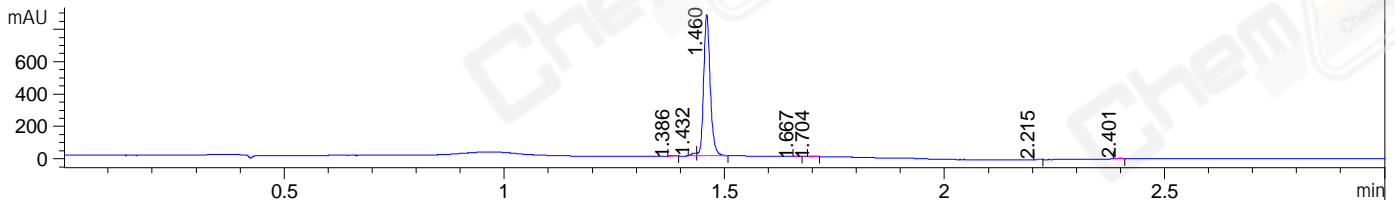
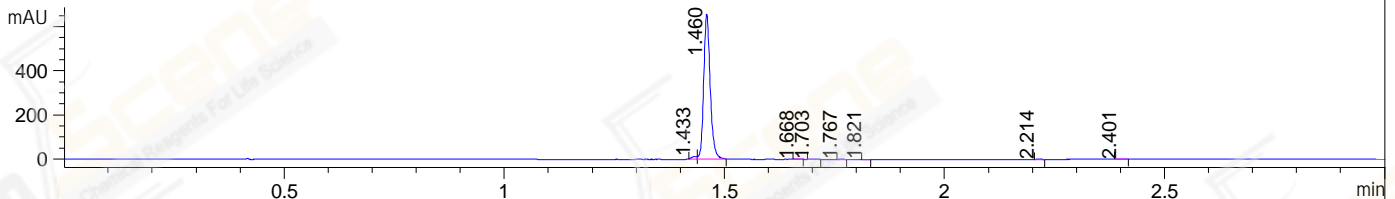


File ..\DATA\2019\20190120\549\CPK2019-118-01512.D Tgt Mass (CHM):
 Injection Date : 20 Jan 19 9:49 am +0800 Seq. Line : 4
 Sample Name : CPK2019-118-01512 Location : P2-A-05
 Acq. Operator : LQ_1052 Inj : 1
 Spec. Reported : MS Integration Inj Volume : 1 ul
 Acq. Method : D:\Chem32\1\data\2019\20190120\549\1-POS-3MIN-1.M
 Analysis Method : D:\CHEM32\1\DATA\2019\20190120\549\1-POS-3MIN-1.M
 Catalog No : CS-0824 Batch#01512
 Method Info : Mobile Phase: A: water(0.01%TFA) B:ACN(0.01%TFA)
 Gradient: 5% to 95%B within 1.3 min
 Flow Rate :1.8ml/min
 Column :SunFire C18, 4.6*50mm,3.5um A-RP-314
 Oven Temperature : 45□

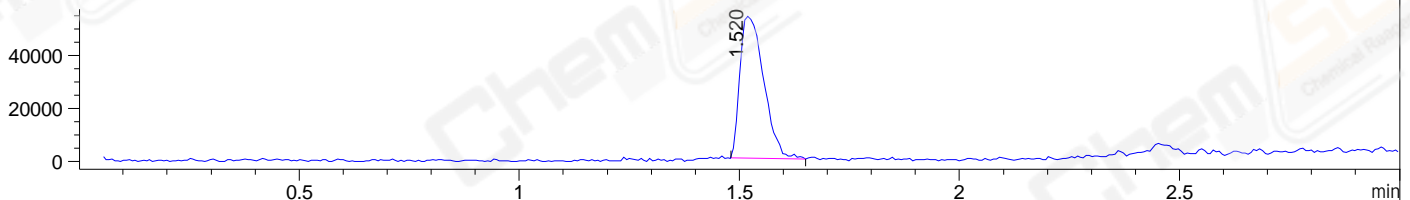
DAD1 B, Sig=214,4 Ref=off



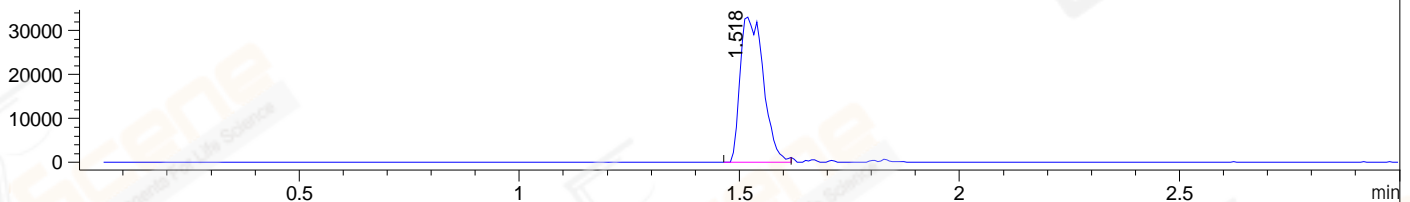
DAD1 C, Sig=254,4 Ref=off



MSD1 TIC, MS File ES-API, Pos, Scan, Frag: 70



Ion 314.3, MSD1 314.3, Target Mass 313.3 +H Positive, EIC=314:315



Integration Results for DAD1 B, Sig=214,4 Ref=off

RetTim	Width	Area	Height	Area%	MS (+)
1.39	0.01	2.26	2.88	0.24	ND
1.43	0.01	14.17	17.62	1.53	ND
1.46	0.02	900.96	875.07	97.53	314
1.67	0.01	1.18	1.65	0.13	ND
1.70	0.01	1.70	2.05	0.18	ND
2.22	0.01	0.76	1.13	0.08	ND
2.40	0.01	2.79	3.27	0.30	142

Integration Results for DAD1 C, Sig=254,4 Ref=off

RetTim	Width	Area	Height	Area%	MS (+)
1.43	0.01	10.92	13.36	1.58	ND
1.46	0.02	676.21	658.27	97.60	314
1.67	0.01	0.80	1.01	0.12	ND
1.70	0.02	1.65	1.62	0.24	ND
1.77	0.01	0.76	0.99	0.11	ND
1.82	0.01	0.32	0.43	0.05	ND
2.21	0.01	0.96	1.18	0.14	ND

2.40 0.02 1.20 1.22 0.17 142

Integration Results for MSD1 TIC, MS File

RetTime	Width	Area	Height	Area%	MS (+)
1.52	0.06	201515.73	53617.43	100.00	314

Ret. Time: 1.52

<<<< POSITIVE SPECTRA >>>>

ES-API Positive

