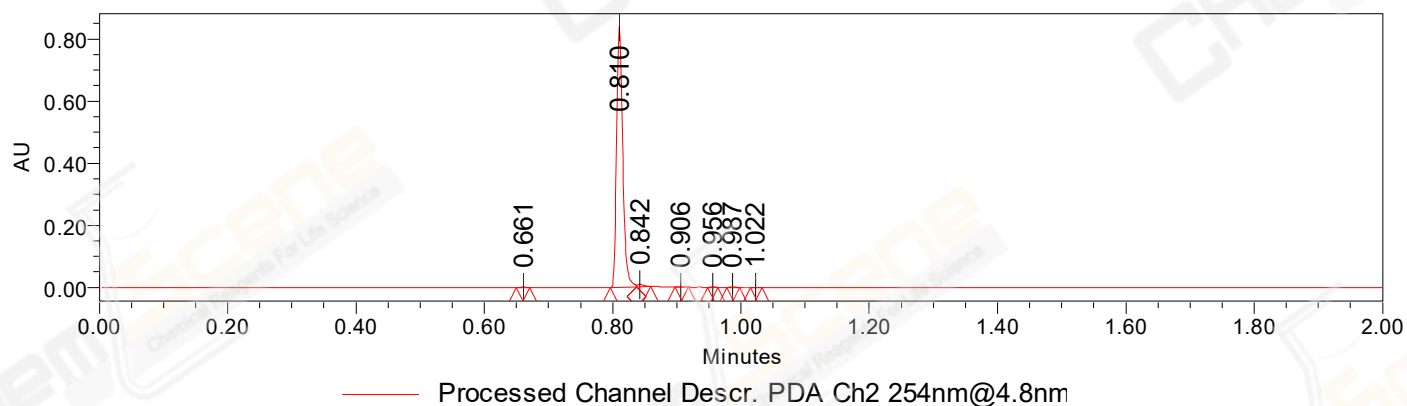


SAMPLE INFORMATION

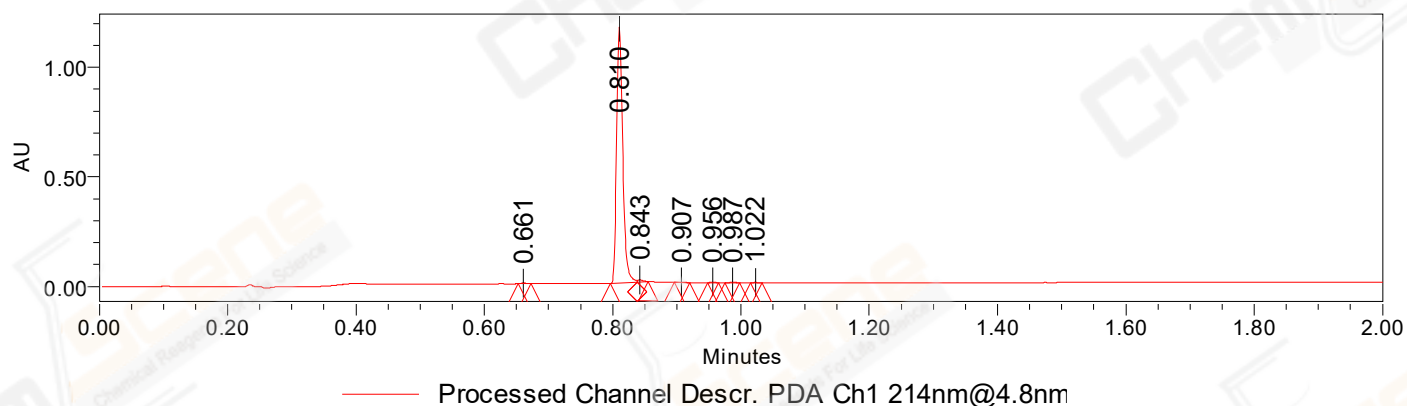
CAS NO.: 741713-40-6
Sample information:
Vial: 2:C,5
Injection #: 1
Injection Volume: 0.30 ul
Run Time: 2.8 Minutes
Sample Set Name: 20221103

Acquired By: LY
Date Acquired: 11/3/2022 4:35:12 PM CST
Acq. Method Set: 1_POS_2MIN
Date Processed: 11/3/2022 4:55:01 PM CST,
Processing Method: PDA_01, MS_scan
Channel Name: PDA Ch1 214nm@4.8nm, MS TIC,
Column Name: A-RP-985

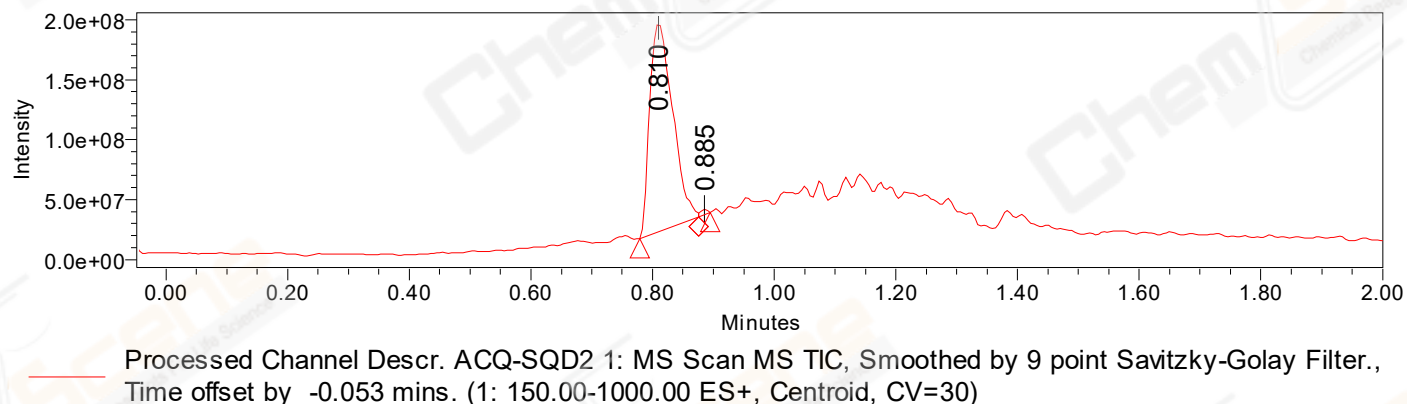
Auto-Scaled Chromatogram



Auto-Scaled Chromatogram



Auto-Scaled Chromatogram



Peak Results
Channel Name: PDA Ch2 254nm@4.8nm

	RT	Width (sec)	Area	Height	% Area	Base Peak (Combined) (m/z)	Channel Name
1	0.661	1.250	1152	2000	0.21	151.94	PDA Ch2 254nm@4.8nm
2	0.810	2.450	552629	842736	98.49	152.06	PDA Ch2 254nm@4.8nm
3	0.842	1.300	4949	7005	0.88	152.07	PDA Ch2 254nm@4.8nm
4	0.906	1.300	334	478	0.06	151.98	PDA Ch2 254nm@4.8nm
5	0.956	0.950	650	1273	0.12	153.01	PDA Ch2 254nm@4.8nm
6	0.987	1.200	989	1680	0.18	152.07	PDA Ch2 254nm@4.8nm
7	1.022	1.100	425	690	0.08	153.01	PDA Ch2 254nm@4.8nm

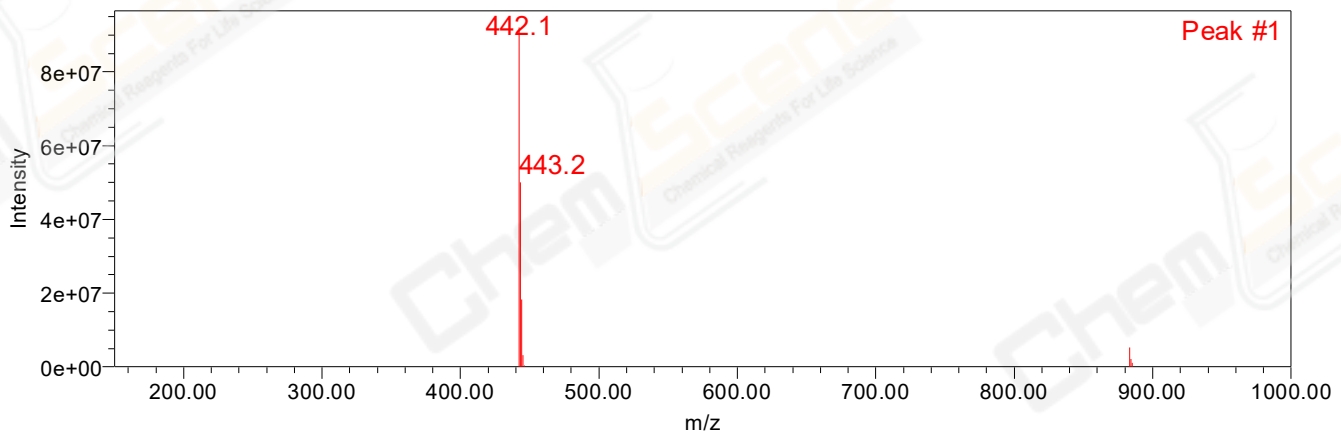
Peak Results
Channel Name: PDA Ch1 214nm@4.8nm

	RT	Width (sec)	Area	Height	% Area	Base Peak (Combined) (m/z)	Channel Name
1	0.661	1.250	1606	2780	0.21	152.00	PDA Ch1 214nm@4.8nm
2	0.810	2.500	767014	1171166	98.26	152.06	PDA Ch1 214nm@4.8nm
3	0.843	1.050	5968	9728	0.76	152.08	PDA Ch1 214nm@4.8nm
4	0.907	1.450	1090	1474	0.14	151.98	PDA Ch1 214nm@4.8nm
5	0.956	1.050	1713	3179	0.22	152.94	PDA Ch1 214nm@4.8nm
6	0.987	1.400	2307	3757	0.30	460.12	PDA Ch1 214nm@4.8nm
7	1.022	1.100	935	1622	0.12	153.01	PDA Ch1 214nm@4.8nm

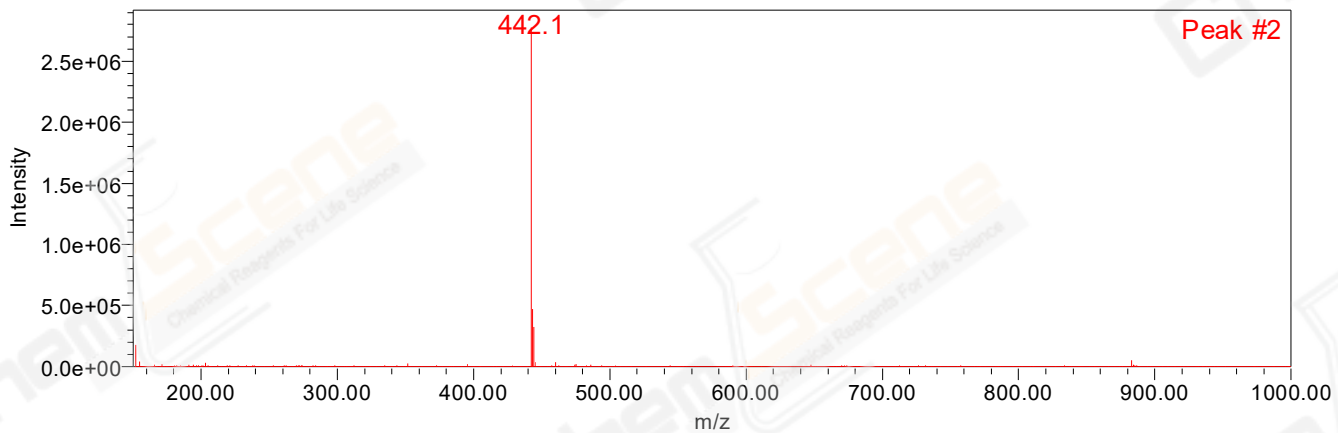
Peak Results
Channel Name: MS TIC

	RT	Width (sec)	Area	Height	% Area	Base Peak (Combined) (m/z)	Channel Name
1	0.810	5.803	453694493	174487092	99.21	442.13	MS TIC
2	0.885	1.160	3611393	3980258	0.79	442.13	MS TIC

Match Plot



Match Plot



Retention Time 0.885 Channel Name MS TIC