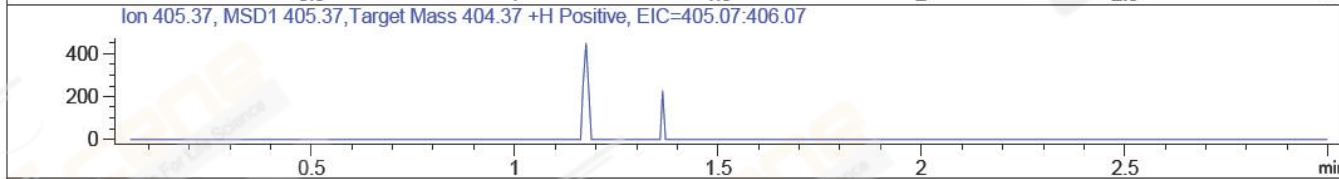
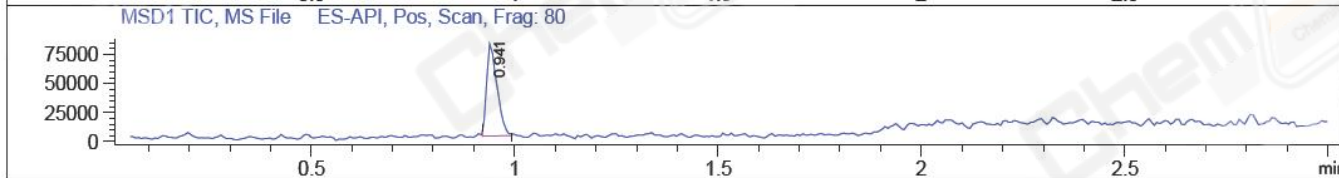
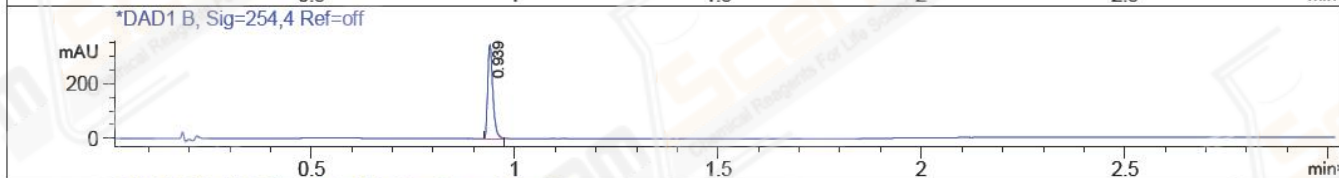
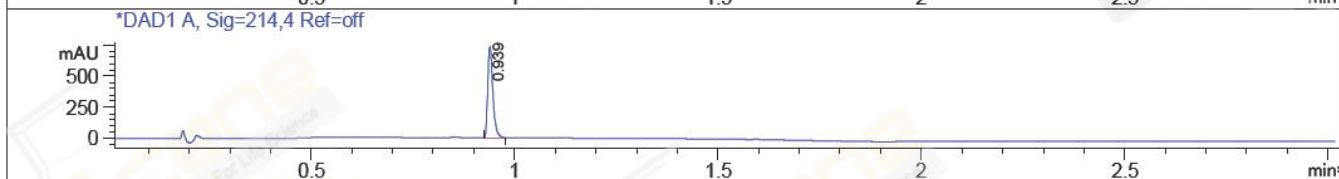
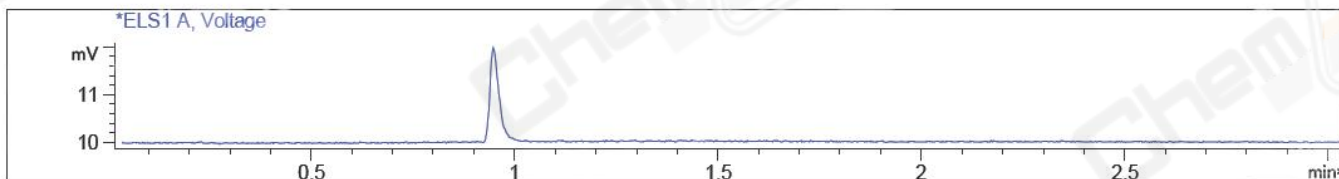


File D:\DATA\A02\MONITOR\CPK2017-321-02140-01783-LCMSA028.D
 Injection Date : 23 Mar 17 5:38 pm +0800 Tgt Mass(EZX) : 404.37
 Sample Name : CPK2017-321-02140 Location : P1-A-09
 Acq. Operator : A02-Monitor Inj : 1
 Spec. Reported : MS Integration Inj Volume : 1 ul
 Acq. Method : C:\CHEM32\1\METHODS\1-POS-4MIN.M
 Analysis Method : C:\CHEM32\1\METHODS\1-POS-4MIN.M
 Catalog No : CS-0326 Batch#02140 Easy-Access Method: '1-POS-4MIN' 404.37
 Method Info : Mobile phase: A 0.05%TFA in water B 0.05%TFA in ACN
 Gradient: 5% increase to 95%B within 1.5min, 95%B for 1.5min.
 Flow Rate: 2 ml/min
 Column: HALO C18,4.6*30mm,2.7um
 Column Temperature: 40C
 Detection:UV(214,4nm) and MS(ESI,Pos mode,120 to 1500 amu)



Integration Results for ELS1 A, Voltage

RetTim	Width	Area	Height	Area%
--------	-------	------	--------	-------

Integration Results for DAD1 A, Sig=214,4 Ref=off

RetTim	Width	Area	Height	Area%
0.94	0.01	638.51	726.77	100.00

Integration Results for DAD1 B, Sig=254,4 Ref=off

RetTim	Width	Area	Height	Area%
0.94	0.01	301.81	342.98	100.00

Ret. Time: 0.94

<<<< POSITIVE SPECTRA >>>>

