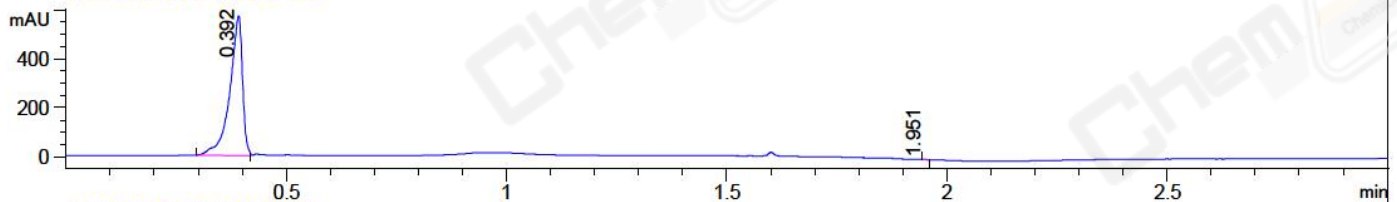


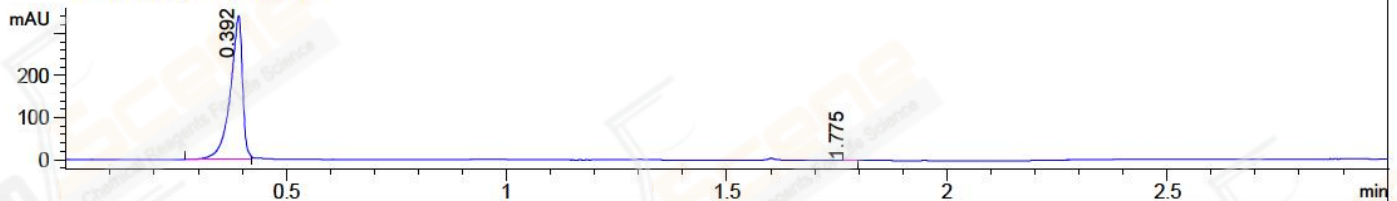
File ..\DATA\2018\20181101\472\CPK2018-031-04023.D Tgt Mass (CHM):

Injection Date : 1 Nov 18 10:04 am +0800 Seq. Line : 11
 Sample Name : CPK2018-031-04023 Location : P2-C-03
 Acq. Operator : LQ_1052 Inj : 1
 Spec. Reported : MS Integration Inj Volume : 1 ul
 Acq. Method : D:\Chem32\1\data\2018\20181101\472\1-POS-3MIN-1.M
 Analysis Method : D:\CHEM32\1\DATA\2018\20181101\472\1-POS-3MIN-1.M
 Catalog No : CS-0372 Batch#04023 A-RP-314
 Method Info : Mobile Phase: A: water(0.01%TFA) B:ACN(0.01%TFA)
 Gradient: 5% to 95%B within 1.3 min
 Flow Rate :1.8ml/min
 Column :SunFire C18, 4.6*50mm,3.5um A-RP-314
 Oven Temperature : 45□

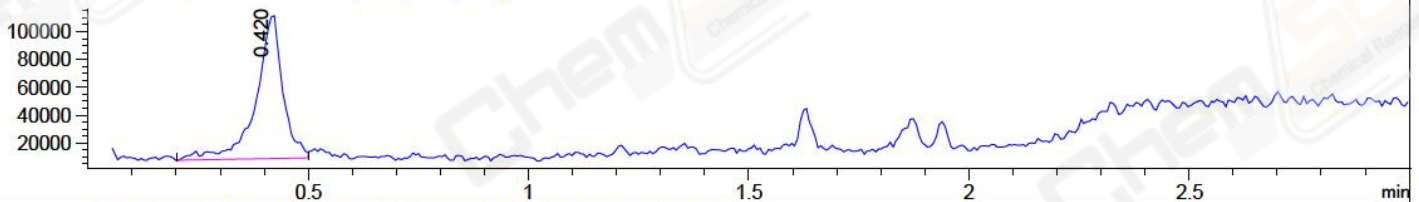
DAD1 B, Sig=214,4 Ref=off



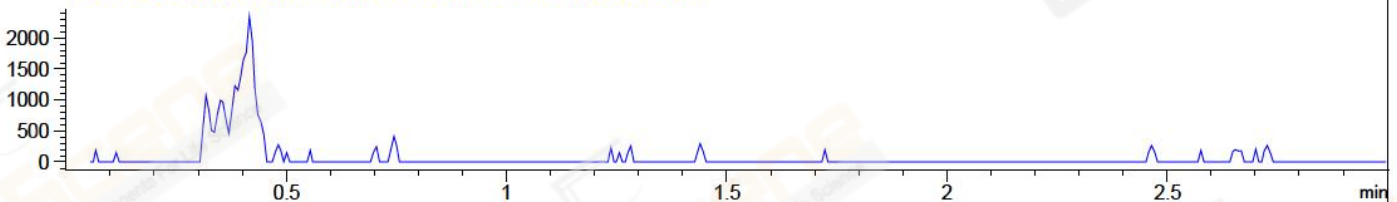
DAD1 C, Sig=254,4 Ref=off



MSD1 TIC, MS File ES-API, Pos, Scan, Frag: 70



Ion 229.2, MSD1 229.2, Target Mass 228.2 +H Positive, EIC=228.9:229.9



Integration Results for DAD1 B, Sig=214,4 Ref=off

RetTim	Width	Area	Height	Area%	MS (+)
0.39	0.03	1138.66	570.04	99.97	457
1.95	0.01	0.39	0.58	0.03	324

Integration Results for DAD1 C, Sig=254,4 Ref=off

RetTim	Width	Area	Height	Area%	MS (+)
0.39	0.03	652.83	339.66	99.96	457
1.78	0.03	0.26	0.17	0.04	ND

Integration Results for MSD1 TIC, MS File

RetTim	Width	Area	Height	Area%	MS (+)
0.42	0.06	440517.03	104513.77	100.00	457

Ret. Time: 0.42

<<<< POSITIVE SPECTRA >>>>

