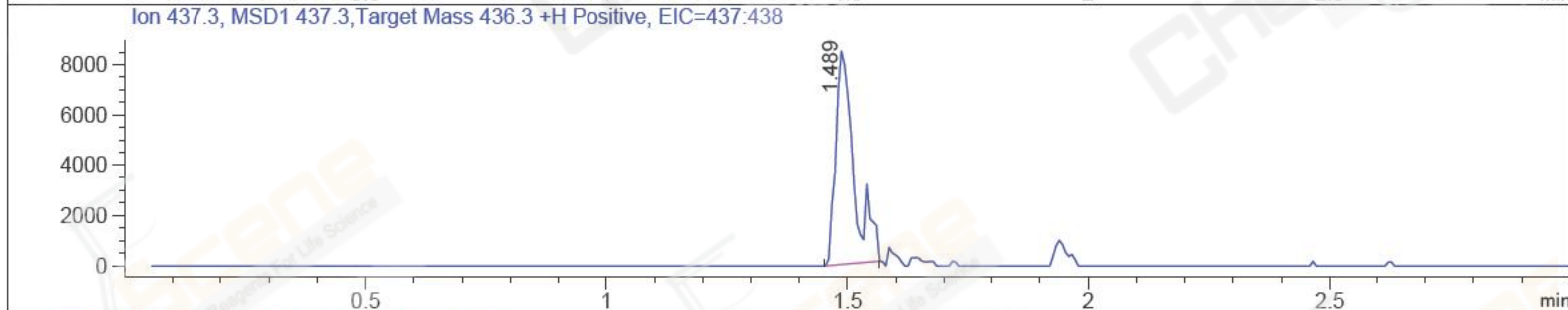
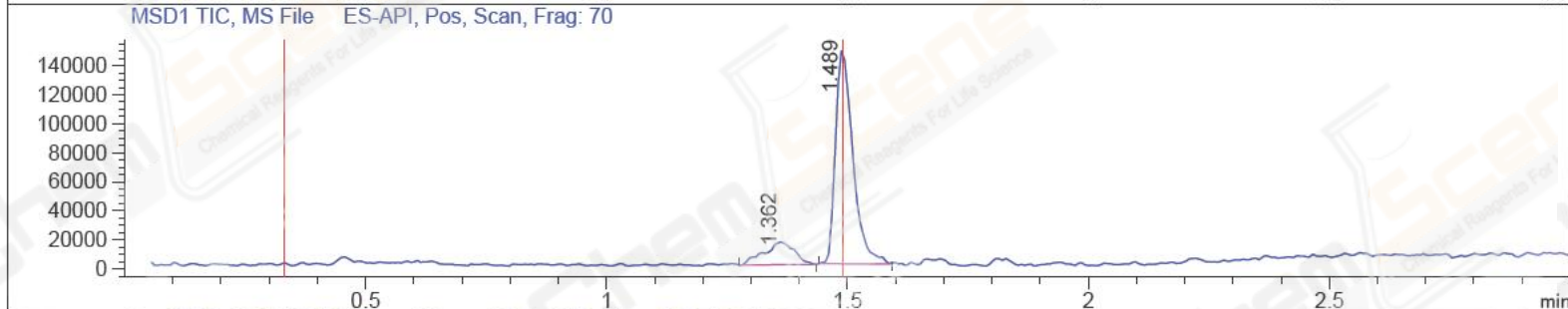
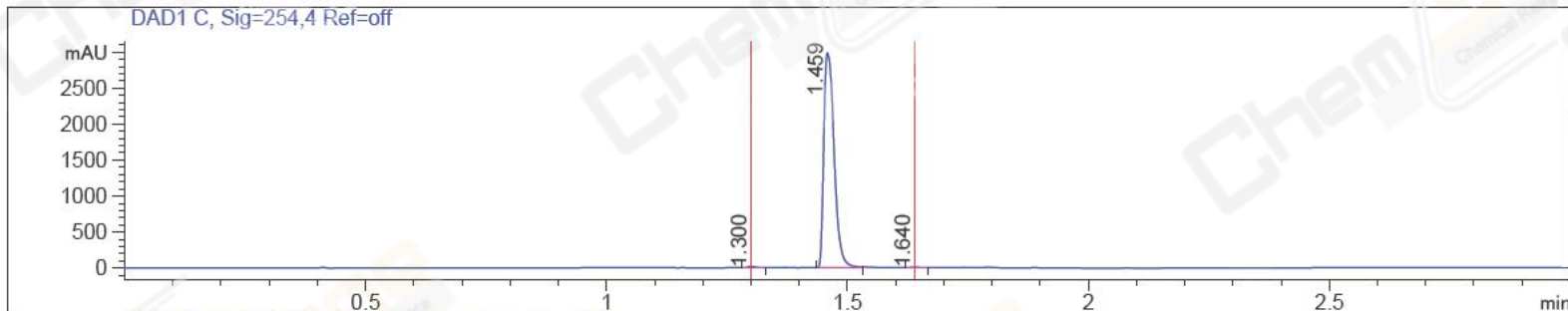


File ..802 2017-08-02 08-50-23\CPK2017-802-04817.D Tgt Mass (CHM):  
 Injection Date : 2 Aug 17 5:01 pm +0800 Seq. Line : 96  
 Sample Name : CPK2017-802-04817 Location : P2-D-09  
 Acq. Operator : GHS\_886 Inj : 1  
 Spec. Reported : MS Integration Inj Volume : 10 ul  
 Acq. Method : D:\chem32\1\DATA\20170802\20170802 2017-08-02 08-50-23\1-POS-3MIN.M  
 Analysis Method : D:\CHEM32\1\DATA\20170802\20170802 2017-08-02 08-50-23\1-POS-3MIN.M  
 Catalog No : CS-0472 Batch#04817 A-RP-186  
 Method Info : Mobile Phase: A: water(0.01%TFA) B:ACN(0.01%TFA)  
 Gradient: 5% to 95%B within 1.3 min  
 Flow Rate :1.8ml/min  
 Column :SunFire C18, 4.6\*50mm,3.5um A-RP-186  
 Oven Temperature : 45C



Integration Results for DAD1 C, Sig=254,4 Ref=off

RetTim	Width	Area	Height	Area%	MS (+)
1.30	0.02	17.37	16.76	0.39	303
1.46	0.02	4446.73	2982.82	99.41	438
1.64	0.02	9.00	7.49	0.20	ND

Integration Results for MSD1 TIC, MS File

RetTim	Width	Area	Height	Area%	MS (+)
1.36	0.06	68751.13	15684.04	15.63	ND
1.49	0.04	371106.50	149234.31	84.37	438

Ret. Time: 1.49

