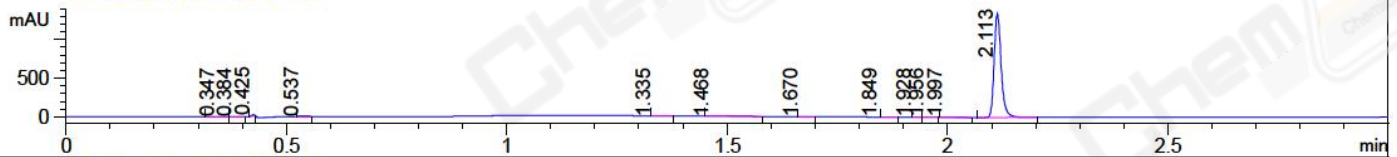
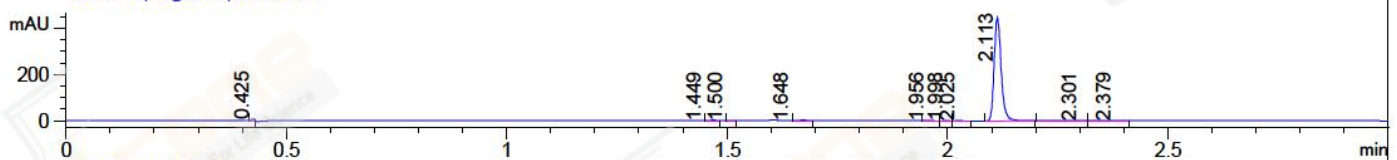


File ..\2018\20180228\20180228\CPK2018-223-05007.D Tgt Mass (CHM):  
Injection Date : 28 Feb 18 7:00 pm +0800 Seq. Line : 116  
Sample Name : CPK2018-223-05007 Location : P1-E-05  
Acq. Operator : SYSTEM Inj : 1  
Spec. Reported : MS Integration Inj Volume : 2 ul  
Acq. Method : D:\LCMS03\Data\2018\20180228\20180228\1-POS-3MIN.M  
Analysis Method : D:\LCMS03\Data\2018\20180228\20180228\1-POS-3MIN.M  
Catalog No : CS-0058 Batch#05007  
Method Info : Mobile Phase: A: water(0.01%TFA) B:ACN(0.01%TFA)  
Gradient: 5% to 95%B within 1.3 min  
Flow Rate :1.8ml/min  
Column :SunFire C18, 4.6\*50mm,3.5um A-RP-186  
Oven Temperature : 45C

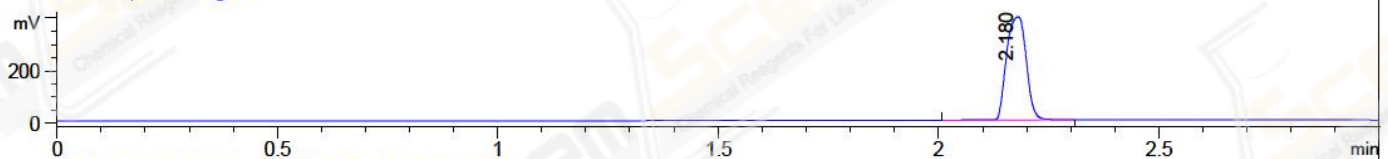
DAD1 A, Sig=214,4 Ref=off



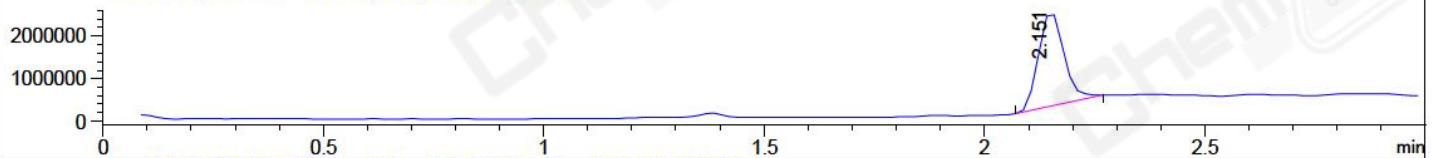
DAD1 B, Sig=254,4 Ref=off



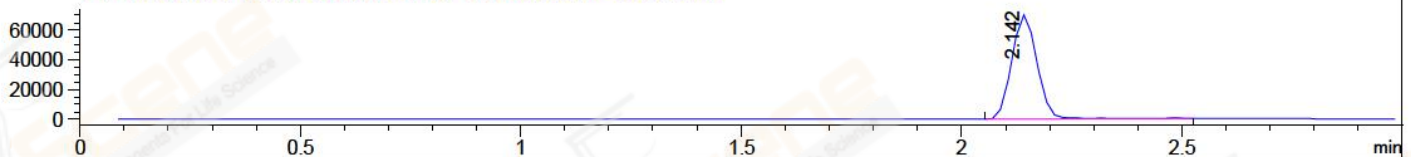
ELS1 A, ELSD Signal



MSD1 TIC, MS File ES-API, Pos, Scan, Frag: 70



Ion 479.7, MSD1 479.7, Target Mass 478.7 +H Positive, EIC=479.4:480.4



Integration Results for DAD1 A, Sig=214,4 Ref=off

RetTim	Width	Area	Height	Area%	MS (+)
0.35	0.03	2.80	1.73	0.18	102
0.38	0.01	2.26	2.60	0.15	102
0.43	0.01	9.41	21.89	0.62	102
0.54	0.02	6.73	7.40	0.44	102
1.33	0.04	0.77	0.28	0.05	702
1.47	0.02	4.74	4.06	0.31	233
1.67	0.02	0.64	0.53	0.04	233
1.85	0.02	0.40	-0.17	0.03	233
1.93	0.01	0.30	0.33	0.02	233
1.96	0.01	1.99	2.20	0.13	233
2.00	0.02	2.58	2.31	0.17	105
2.11	0.02	1486.57	1343.19	97.85	979

Integration Results for DAD1 B, Sig=254,4 Ref=off

RetTim	Width	Area	Height	Area%	MS (+)
0.43	0.01	3.04	7.42	0.60	102
1.45	0.02	0.30	0.01	0.06	233

1.50	0.01	0.10	0.01	0.02	233
1.65	0.02	0.51	0.01	0.10	233
1.96	0.01	0.61	0.66	0.12	233
2.00	0.01	0.43	0.52	0.09	105
2.03	0.02	0.92	0.89	0.18	105
2.11	0.02	497.32	446.82	98.54	979
2.30	0.03	0.69	0.28	0.14	105
2.38	0.03	0.74	0.33	0.15	105

## Integration Results for ELS1 A, ELSD Signal

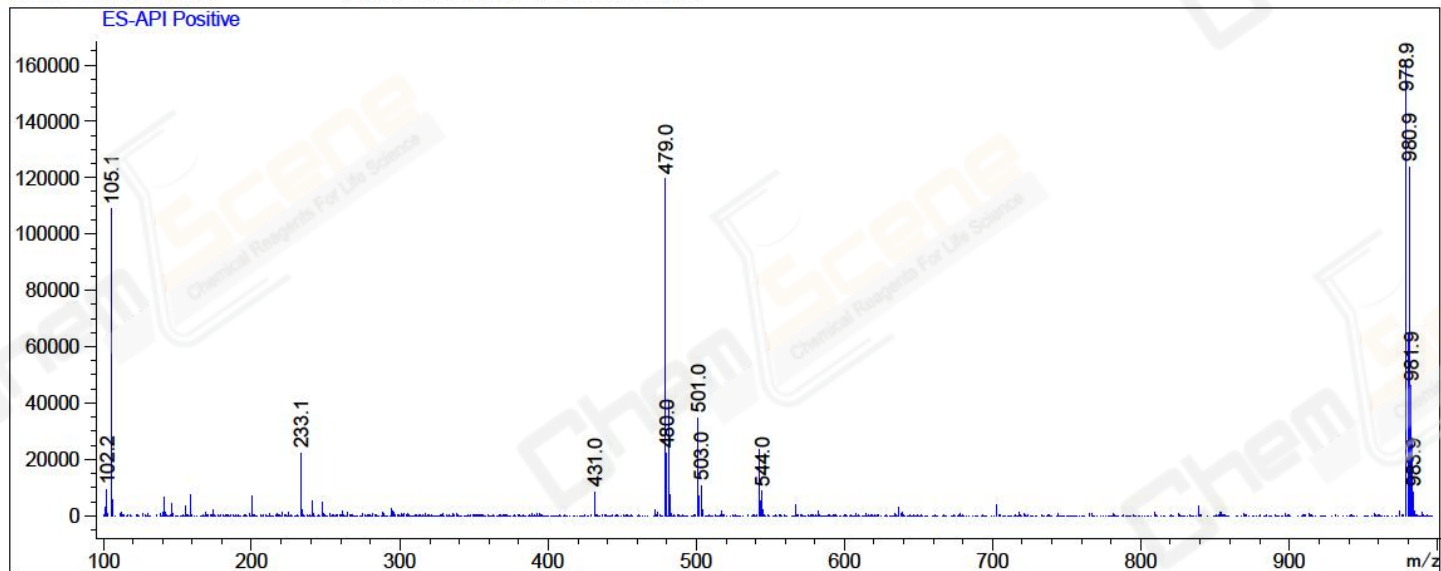
RetTim	Width	Area	Height	Area%	MS (+)
2.18	0.05	1210.41	392.42	100.00	105

## Integration Results for MSD1 TIC, MS File

RetTim	Width	Area	Height	Area%	MS (+)
2.15	0.07	9009578.00	2227441.25	100.00	979

Ret. Time: 2.15

<<<< POSITIVE SPECTRA >>>>



\*\*\* End of Report \*\*\*