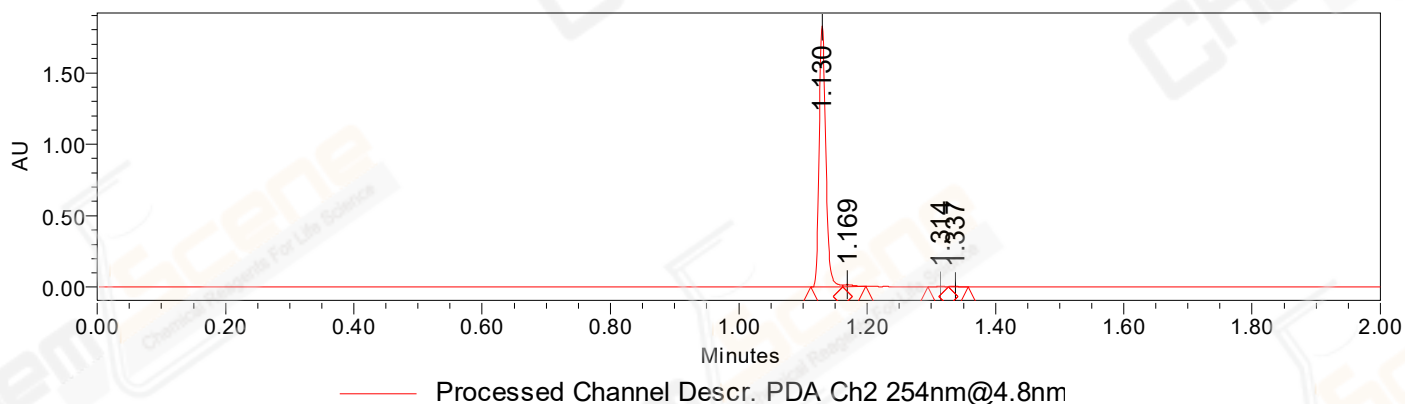


## SAMPLE INFORMATION

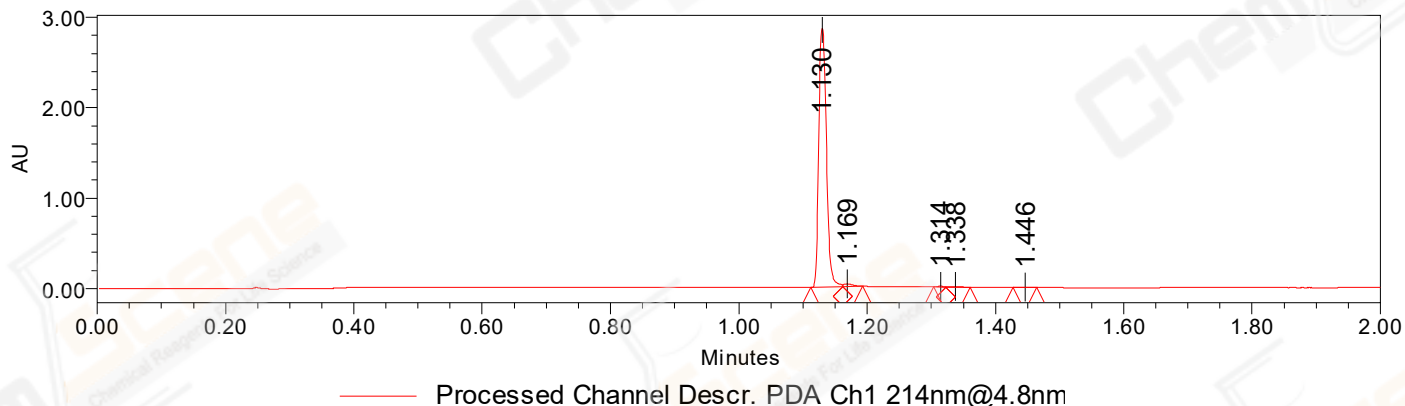
Sample Name: CPK2022-823  
CAS NO.: 150683-30-0  
Vial: 1:F,8  
Injection #: 1  
Injection Volume: 0.30 ul  
Run Time: 2.8 Minutes  
Sample Set Name: 20220823

Acquired By: LY  
Date Acquired: 8/23/2022 7:52:19 PM CST  
Acq. Method Set: 1\_POS\_2MIN  
Date Processed: 8/24/2022 9:39:26 AM CST,  
Processing Method: PDA\_01, MS\_scan  
Channel Name: PDA Ch1 214nm@4.8nm, MS TIC,  
Column Name: A-RP-985

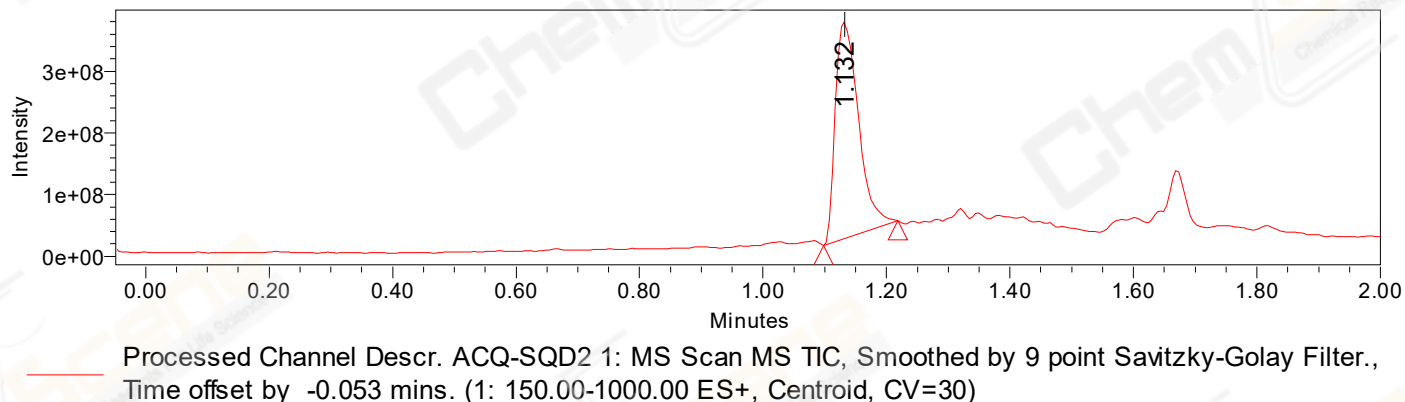
### Auto-Scaled Chromatogram



### Auto-Scaled Chromatogram



### Auto-Scaled Chromatogram



Peak Results  
Channel Name: PDA Ch2 254nm@4.8nm

	RT	Width (sec)	Area	Height	% Area	Base Peak (Combined) (m/z)	Channel Name
1	1.130	2.950	1309285	1826000	98.44	151.99	PDA Ch2 254nm@4.8nm
2	1.169	2.200	14290	13717	1.07	897.22	PDA Ch2 254nm@4.8nm
3	1.314	1.900	3315	3897	0.25	152.96	PDA Ch2 254nm@4.8nm
4	1.337	1.850	3179	3228	0.24	241.20	PDA Ch2 254nm@4.8nm

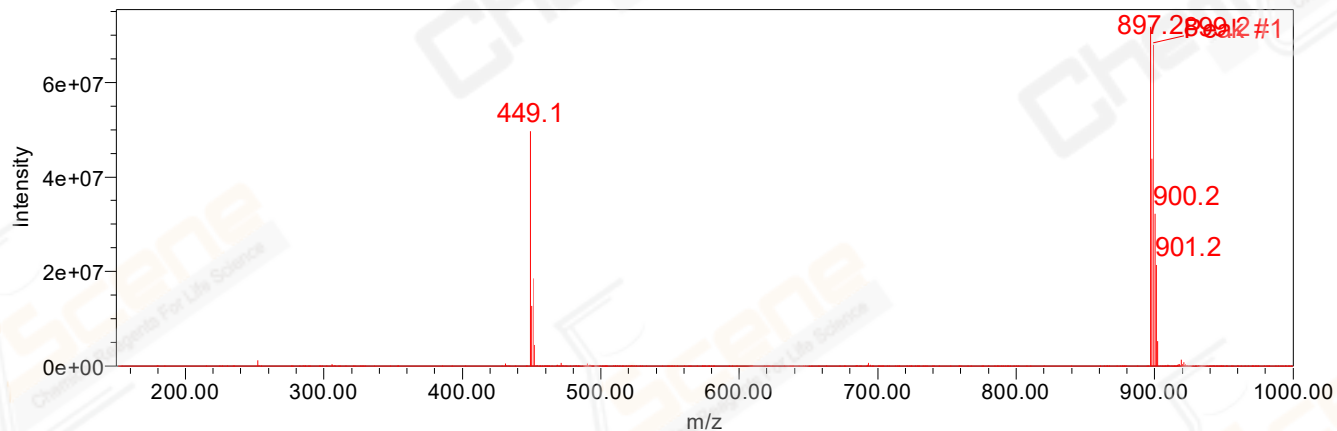
Peak Results  
Channel Name: PDA Ch1 214nm@4.8nm

	RT	Width (sec)	Area	Height	% Area	Base Peak (Combined) (m/z)	Channel Name
1	1.130	2.950	2377663	2865789	98.04	151.99	PDA Ch1 214nm@4.8nm
2	1.169	1.900	29449	30183	1.21	897.20	PDA Ch1 214nm@4.8nm
3	1.314	1.150	6633	9688	0.27	151.98	PDA Ch1 214nm@4.8nm
4	1.338	2.300	8977	8394	0.37	152.02	PDA Ch1 214nm@4.8nm
5	1.446	2.200	2587	2950	0.11	152.04	PDA Ch1 214nm@4.8nm

Peak Results  
Channel Name: MS TIC

	RT	Width (sec)	Area	Height	% Area	Base Peak (Combined) (m/z)	Channel Name
1	1.132	7.253	918625919	351556058	100.00	897.22	MS TIC

Match Plot



Retention Time 1.132 Channel Name MS TIC