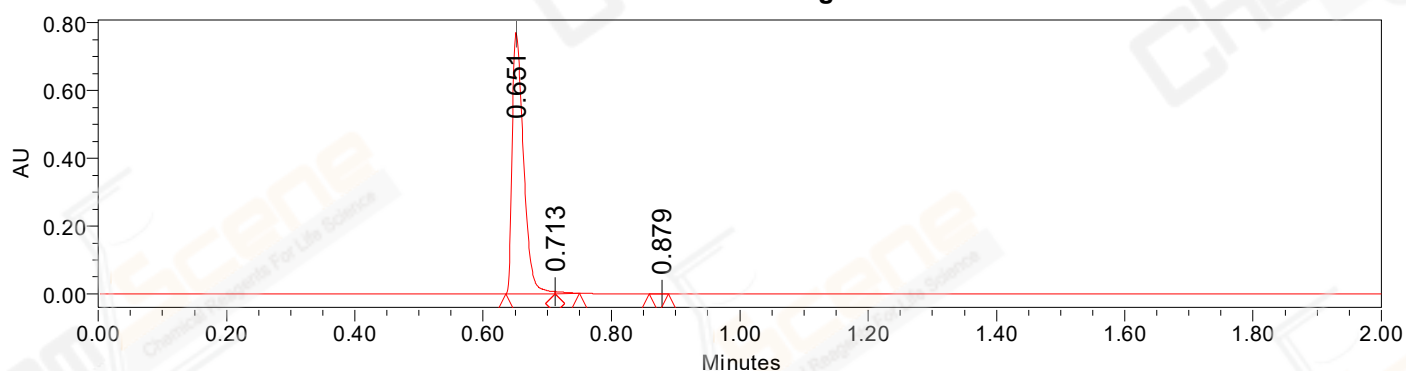


## SAMPLE INFORMATION

CAS NO.: 860352-01-8  
Sample information:  
Vial: 1:E,7  
Injection #: 1  
Injection Volume: 0.30 ul  
Run Time: 2.8 Minutes  
Sample Set Name: 20221011

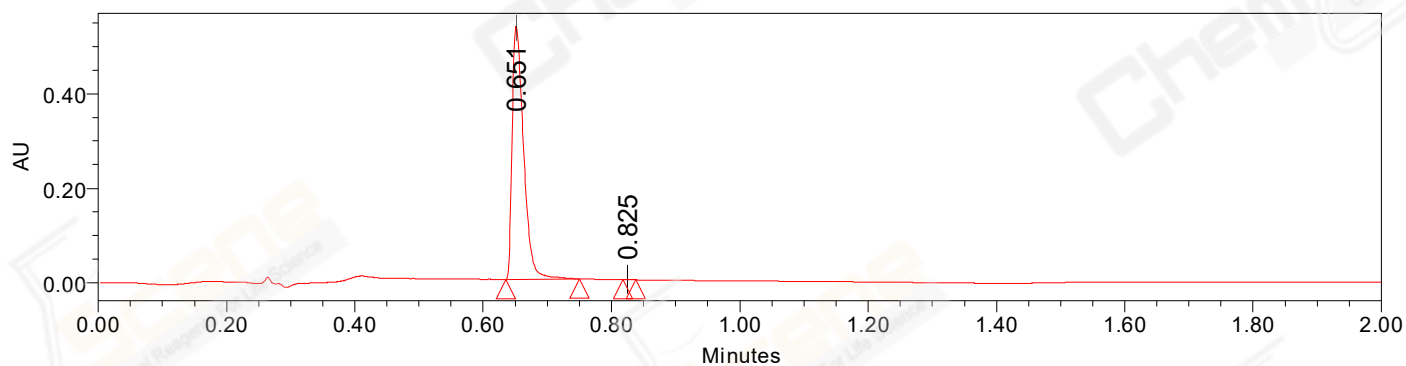
Acquired By: LY  
Date Acquired: 10/11/2022 6:00:30 PM CST  
Acq. Method Set: 1\_POS\_2MIN\_100\_1000  
Date Processed: 10/12/2022 1:27:55 PM CST,  
Processing Method: PDA\_01, MS\_scan  
Channel Name: MS TIC, PDA Ch2 214nm@4.8nm,  
Column Name: A-RP-985

### Auto-Scaled Chromatogram



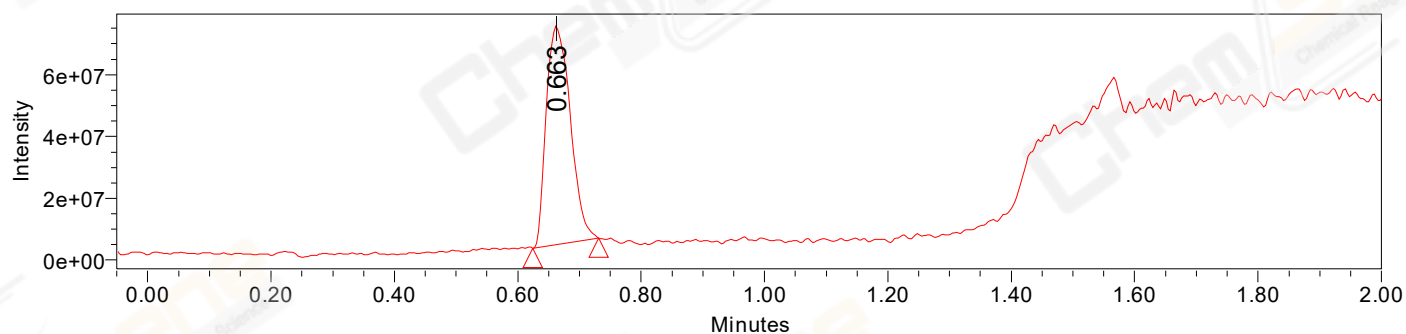
Processed Channel Descr. PDA Ch1 254nm@4.8nm

### Auto-Scaled Chromatogram



Processed Channel Descr. PDA Ch2 214nm@4.8nm

### Auto-Scaled Chromatogram



Processed Channel Descr. ACQ-SQD2 1: MS Scan MS TIC, Smoothed by 9 point Savitzky-Golay Filter., Time offset by -0.053 mins. (1: 100.00-1000.00 ES+, Centroid, CV=30)

Peak Results  
Channel Name: PDA Ch2 214nm@4.8nm

	RT	Width (sec)	Area	Height	% Area	Base Peak (Combined) (m/z)	Channel Name
1	0.651	6.900	667801	536318	99.94	130.61	PDA Ch2 214nm@4.8nm
2	0.825	1.150	371	683	0.06	130.64	PDA Ch2 214nm@4.8nm

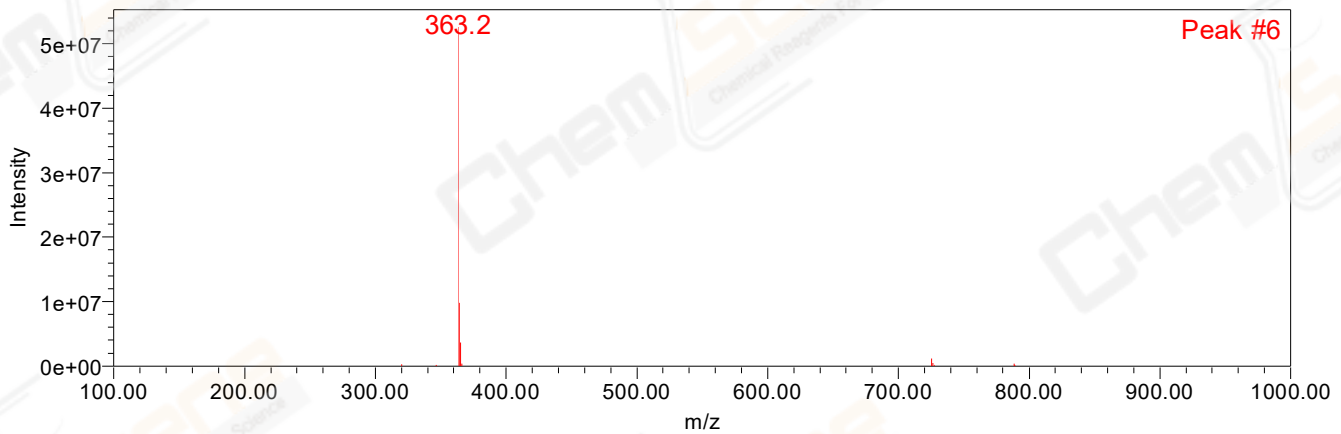
Peak Results  
Channel Name: PDA Ch1 254nm@4.8nm

	RT	Width (sec)	Area	Height	% Area	Base Peak (Combined) (m/z)	Channel Name
1	0.651	4.650	952848	770928	99.37	130.61	PDA Ch1 254nm@4.8nm
2	0.713	2.250	5676	5903	0.59	363.21	PDA Ch1 254nm@4.8nm
3	0.879	1.750	322	284	0.03	115.14	PDA Ch1 254nm@4.8nm

Peak Results  
Channel Name: MS TIC

	RT	Width (sec)	Area	Height	% Area	Base Peak (Combined) (m/z)	Channel Name
1	0.663	6.428	189771526	70587037	100.00	363.21	MS TIC

Match Plot



Retention Time 0.663 Channel Name MS TIC