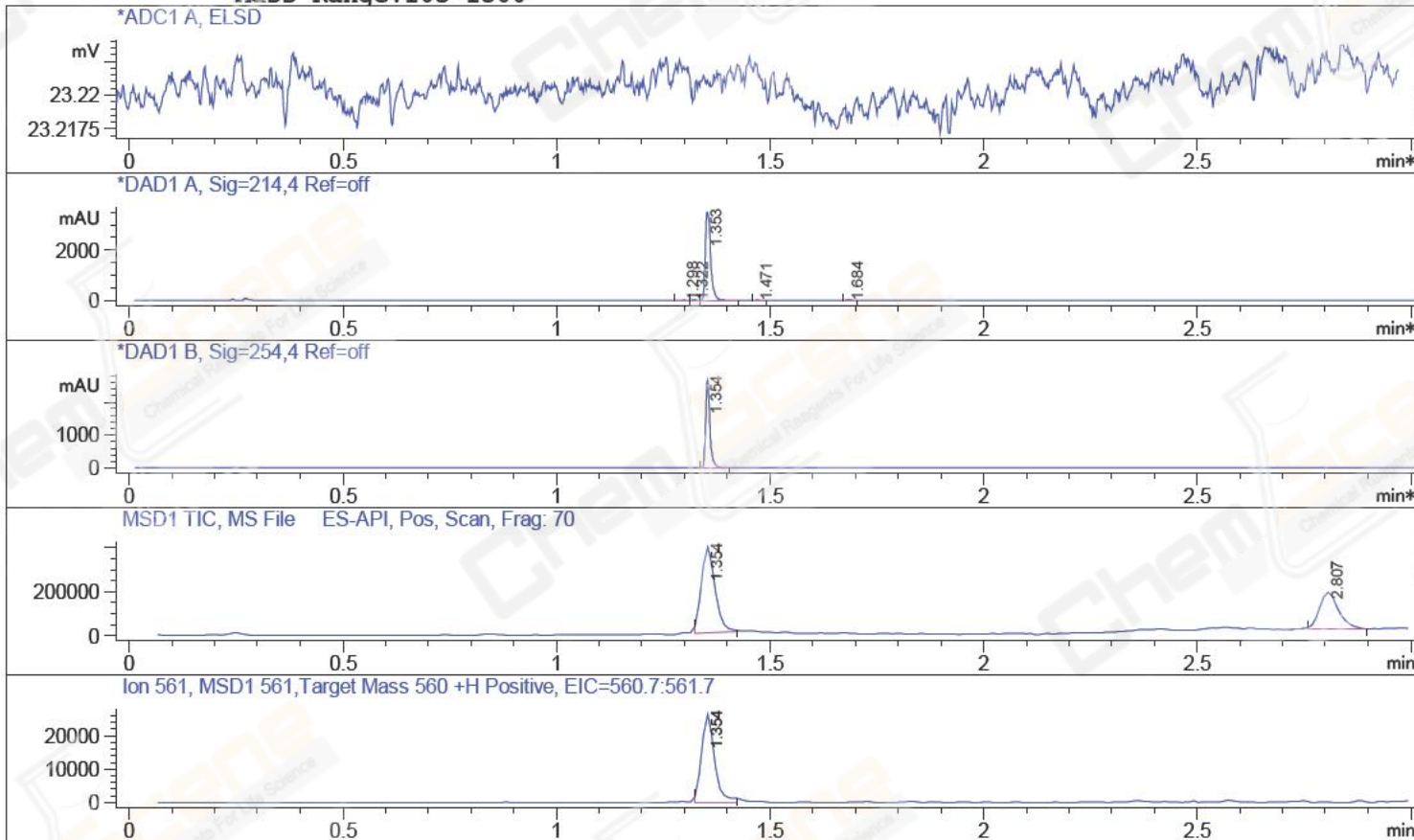


File D:\DATA\A02\MONITOR\CPK2016-713-056011-04476-LCMSA016.D
 Injection Date : 20 Jul 16 3:21 pm +0800 Tgt Mass (EZX) : 560.00
 Sample Name : CPK2016-713-05601 Location : P1-C-03
 Acq. Operator : A02-Monitor Inj : 1
 Spec. Reported : MS Integration Inj Volume : 3 ul
 Acq. Method : D:\METHODS\1-POS-MON.M
 Analysis Method : D:\METHODS\1-POS-MON.M
 Catalog No : CS-0586 Batch#05601 Easy-Access Method: '1-POS-MON' 560.00
 Method Info : Mobile Phase: A: water(0.01%TFA) B : ACN
 Gradient: 5%B increase to 95%B within1.5min,
 95%B for 1.5min,back to 5%B within 0.01min.
 Flow Rate: 2.0 mL/min
 Column: Sunfire C18 4.6*50mm 3.5um
 Oven Temperature: 50 C
 Mass Range:103-1500



Integration Results for ADC1 A, ELSD

RetTim	Width	Area	Height	Area%
--------	-------	------	--------	-------

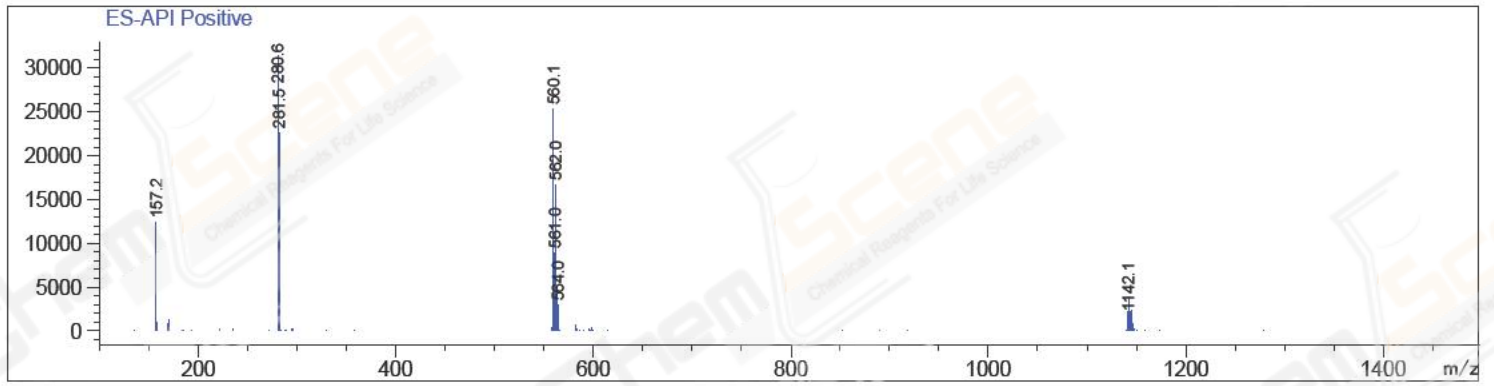
Integration Results for DAD1 A, Sig=214,4 Ref=off

RetTim	Width	Area	Height	Area%
1.30	0.01	5.21	9.45	0.17
1.32	0.01	7.21	10.78	0.23
1.35	0.01	3064.19	3510.69	99.02
1.47	0.01	6.97	8.23	0.23
1.68	0.01	11.04	12.94	0.36

Integration Results for DAD1 B, Sig=254,4 Ref=off

RetTim	Width	Area	Height	Area%
1.35	0.01	1858.89	2691.89	100.00

Ret. Time: 1.35 <<<< POSITIVE SPECTRA >>>>



Ret. Time: 2.81

