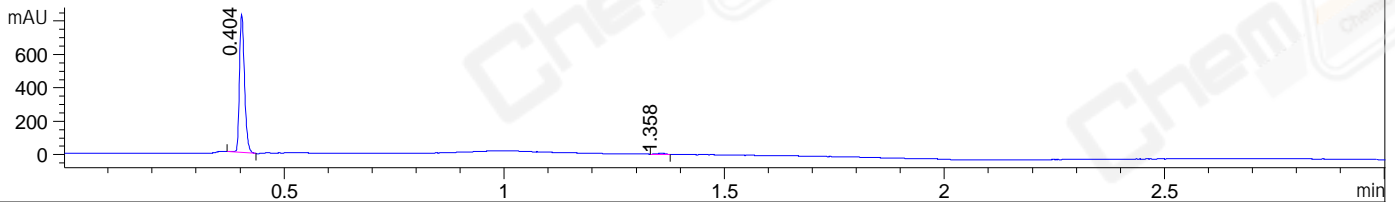
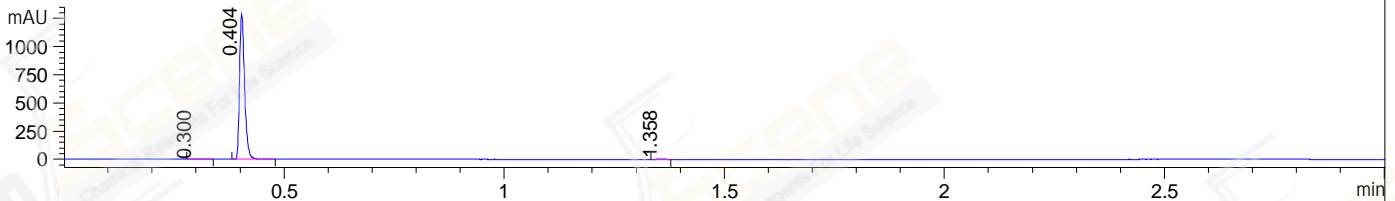


File ..DATA\2020\20200330\902\CPK2020-324-06363-.D Tgt Mass (CHM):
Injection Date : 30 Mar 20 11:17 am +0800 Seq. Line : 28
Sample Name : CPK2020-324-06363 Location : P1-A-07
Acq. Operator : ZJ_1432 Inj : 1
Spec. Reported : MS Integration Inj Volume : 5 ul
Acq. Method : D:\Chem32\1\data\2020\20200330\902\1-POS-3MIN.M
Analysis Method : D:\CHEM32\1\DATA\2020\20200330\902\1-POS-3MIN.M
Catalog No : CS-0878 Batch#06363
Method Info : Mobile Phase: A: water(0.01%TFA) B:ACN(0.01%TFA)
Gradient: 5% to 95%B within 1.3 min
Flow Rate :1.8ml/min
Column :SunFire C18, 4.6*50mm,3.5um A-RP-433
Oven Temperature : 45□

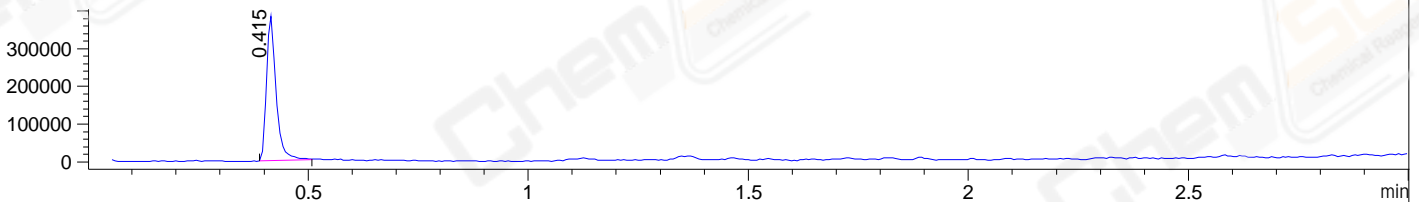
DAD1 B, Sig=214,4 Ref=off



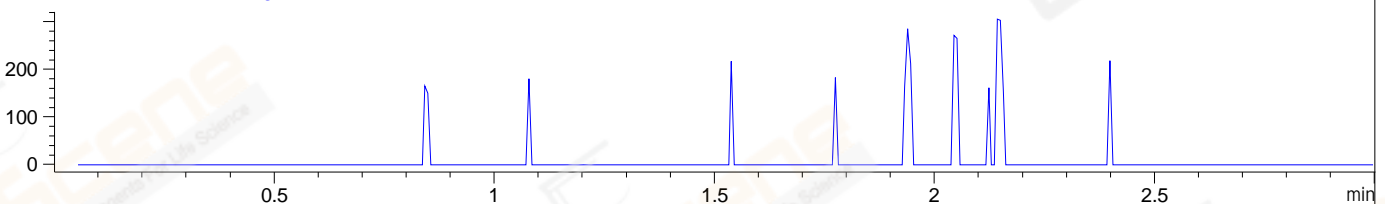
DAD1 C, Sig=254,4 Ref=off



MSD1 TIC, MS File ES-API, Pos, Scan, Frag: 70



Ion 320, MSD1 320, Target Mass 319 +H Positive, EIC=319.7:320.7



Integration Results for DAD1 B, Sig=214,4 Ref=off

RetTim	Width	Area	Height	Area%	MS (+)
0.40	0.01	663.18	827.61	98.67	248
1.36	0.02	8.96	7.20	1.33	302

Integration Results for DAD1 C, Sig=254,4 Ref=off

RetTim	Width	Area	Height	Area%	MS (+)
0.30	0.02	1.36	1.15	0.13	ND
0.40	0.01	1037.57	1287.65	99.26	248
1.36	0.02	6.34	6.16	0.61	302

Integration Results for MSD1 TIC, MS File

RetTim	Width	Area	Height	Area%	MS (+)
0.42	0.02	591116.38	386148.28	100.00	248

Ret. Time: 0.42

<<<< POSITIVE SPECTRA >>>>

