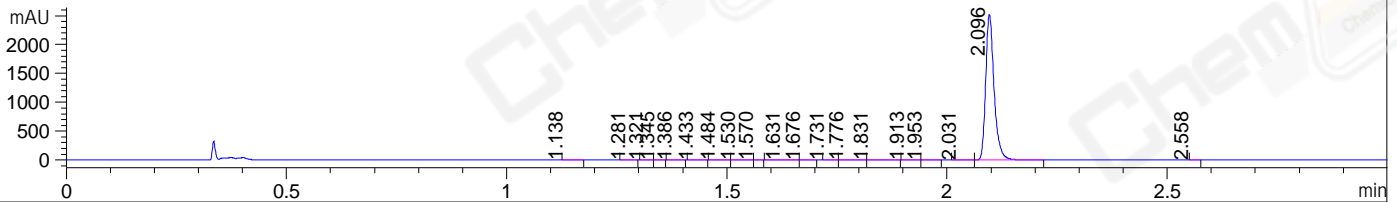
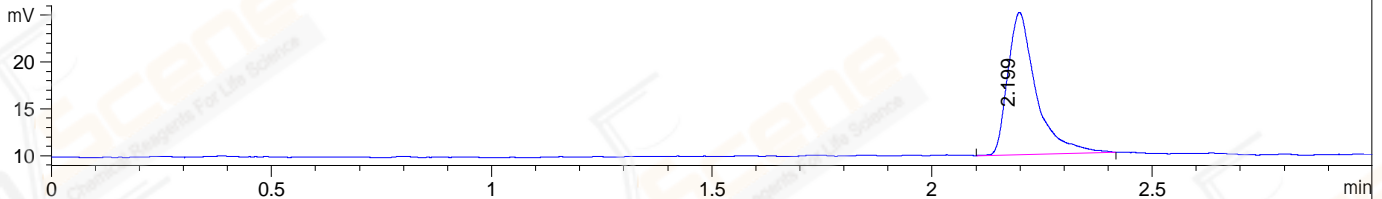


File ..ata\20190116\20190116\CPK2019-116-06447-0.D Tgt Mass (CHM):  
 Injection Date : 16 Jan 19 1:52 pm +0800 Seq. Line : 63  
 Sample Name : CPK2019-116-06447 Location : P1-E-09  
 Acq. Operator : SYSTEM Inj : 1  
 Spec. Reported : MS Integration Inj Volume : 10 ul  
 Acq. Method : D:\LCMS03\Data\20190116\20190116\1-POS-3MIN.M  
 Analysis Method : D:\LCMS03\Data\20190116\20190116\1-POS-3MIN.M  
 Catalog No : CS-0705 Batch#06447  
 Method Info : Mobile Phase: A: water(0.01%TFA) B:ACN(0.01%TFA)  
 Gradient: 5% to 95%B within 1.3 min  
 Flow Rate :1.8ml/min  
 Column :SunFire C18, 4.6\*50mm,3.5um A-RP-186  
 Oven Temperature : 45C

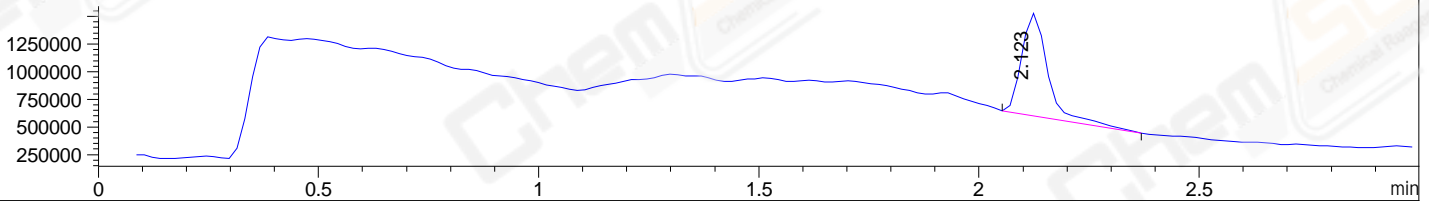
DAD1 B, Sig=254,4 Ref=off



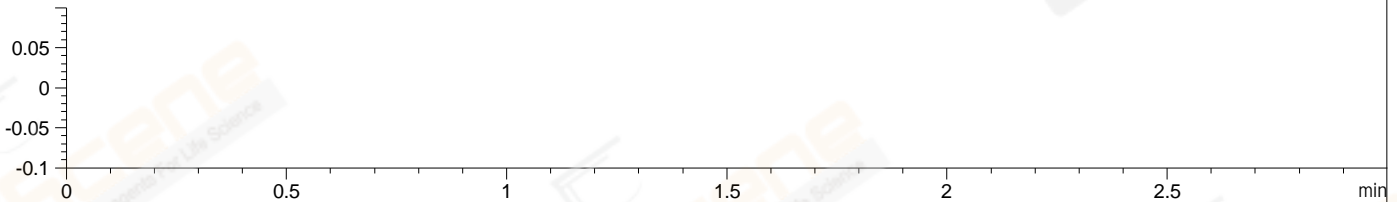
ELS1 A, ELSD Signal



MSD1 TIC, MS File ES-API, Pos, Scan, Frag: 70



Ion 1, MSD1 1, Target Mass 0 +H Positive, EIC=0.7:1.7



Integration Results for DAD1 B, Sig=254,4 Ref=off

| RetTim | Width | Area    | Height  | Area% | MS (+) |
|--------|-------|---------|---------|-------|--------|
| 1.14   | 0.01  | 0.61    | 0.74    | 0.02  | 157    |
| 1.28   | 0.02  | 0.19    | 0.16    | 0.01  | 157    |
| 1.32   | 0.02  | 0.35    | 0.37    | 0.01  | 157    |
| 1.35   | 0.01  | 0.19    | 0.22    | 0.01  | 157    |
| 1.39   | 0.01  | 0.47    | 0.50    | 0.01  | 157    |
| 1.43   | 0.01  | 0.36    | 0.36    | 0.01  | 157    |
| 1.48   | 0.02  | 2.88    | 2.46    | 0.09  | 157    |
| 1.53   | 0.02  | 5.47    | 5.05    | 0.16  | 157    |
| 1.57   | 0.01  | 0.06    | 0.10    | 0.00  | 157    |
| 1.63   | 0.02  | 2.77    | 1.67    | 0.08  | 157    |
| 1.68   | 0.02  | 0.21    | 0.19    | 0.01  | 157    |
| 1.73   | 0.01  | 0.28    | 0.32    | 0.01  | 157    |
| 1.78   | 0.02  | 1.73    | 1.33    | 0.05  | 157    |
| 1.83   | 0.02  | 0.65    | 0.48    | 0.02  | 157    |
| 1.91   | 0.01  | 1.28    | 1.30    | 0.04  | 157    |
| 1.95   | 0.02  | 0.48    | 0.38    | 0.01  | 157    |
| 2.03   | 0.02  | 0.59    | 0.40    | 0.02  | 157    |
| 2.10   | 0.02  | 3345.66 | 2521.31 | 99.45 | 157    |
| 2.56   | 0.01  | 0.03    | 0.06    | 0.00  | 157    |

## Integration Results for ELS1 A, ELSD Signal

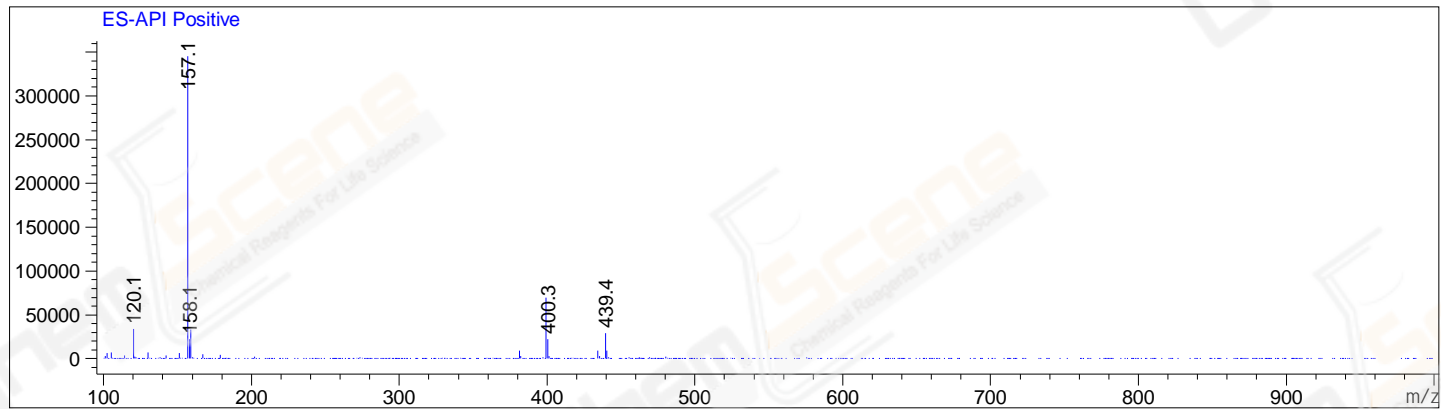
| RetTim | Width | Area  | Height | Area%  | MS (+) |
|--------|-------|-------|--------|--------|--------|
| 2.20   | 0.06  | 67.87 | 15.19  | 100.00 | 157    |

## Integration Results for MSD1 TIC, MS File

| RetTim | Width | Area       | Height    | Area%  | MS (+) |
|--------|-------|------------|-----------|--------|--------|
| 2.12   | 0.06  | 3872239.50 | 930172.56 | 100.00 | 157    |

Ret. Time: 2.12

<<<< POSITIVE SPECTRA >>>>



\*\*\* End of Report \*\*\*