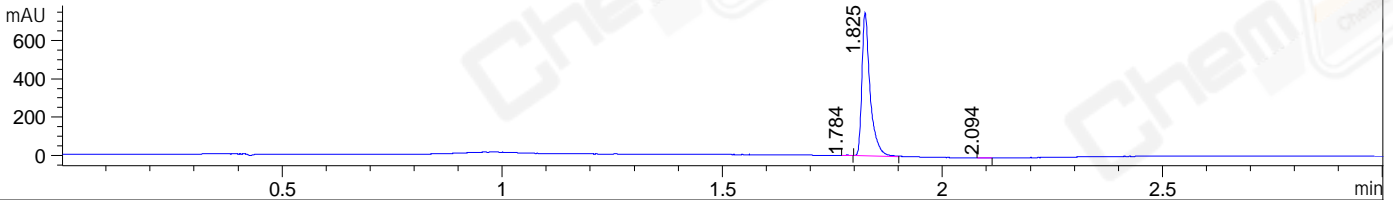
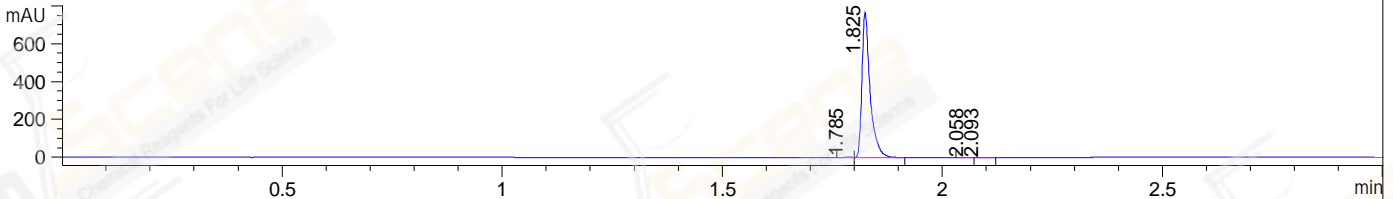


File ..DATA\2019\20191228\796\CPK2019-D27-06846-.D Tgt Mass (CHM):
 Injection Date : 28 Dec 19 3:30 pm +0800 Seq. Line : 86
 Sample Name : CPK2019-D27-06846 Location : P1-E-07
 Acq. Operator : ZJ_1432 Inj : 1
 Spec. Reported : MS Integration Inj Volume : 0.5 ul
 Acq. Method : D:\Chem32\1\data\2019\20191228\796\1-POS-3MIN.M
 Analysis Method : D:\CHEM32\1\DATA\2019\20191228\796\1-POS-3MIN.M
 Catalog No : CS-0317 Batch#06846
 Method Info : Mobile Phase: A: water(0.01%TFA) B:ACN(0.01%TFA)
 Gradient: 5% to 95%B within 1.3 min
 Flow Rate :1.8ml/min
 Column :SunFire C18, 4.6*50mm,3.5um A-RP-433
 Oven Temperature : 45□

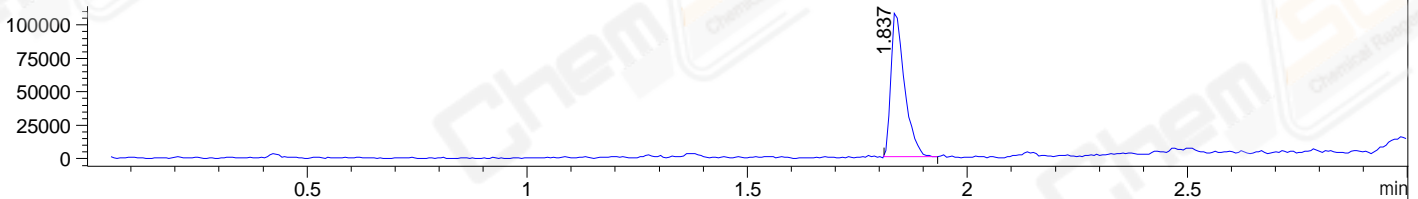
DAD1 B, Sig=214,4 Ref=off



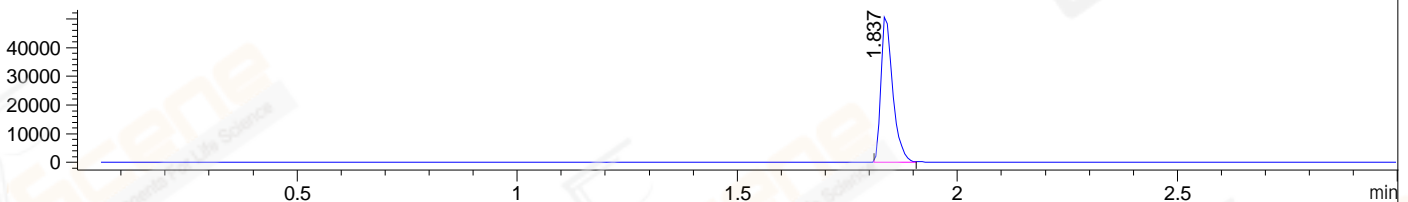
DAD1 C, Sig=254,4 Ref=off



MSD1 TIC, MS File ES-API, Pos, Scan, Frag: 70



Ion 465, MSD1 465, Target Mass 464 +H Positive, EIC=464.7:465.7



Integration Results for DAD1 B, Sig=214,4 Ref=off

RetTim	Width	Area	Height	Area%	MS (+)
1.78	0.02	1.96	2.16	0.20	ND
1.82	0.02	970.58	750.05	99.60	465
2.09	0.02	1.98	2.12	0.20	ND

Integration Results for DAD1 C, Sig=254,4 Ref=off

RetTim	Width	Area	Height	Area%	MS (+)
1.78	0.02	3.59	3.05	0.36	ND
1.82	0.02	995.29	769.29	99.39	465
2.06	0.02	0.73	0.63	0.07	ND
2.09	0.02	1.81	1.57	0.18	ND

Integration Results for MSD1 TIC, MS File

RetTim	Width	Area	Height	Area%	MS (+)
1.84	0.03	232262.53	110187.95	100.00	465

Ret. Time: 1.84

<<<< POSITIVE SPECTRA >>>>

ES-API Positive

