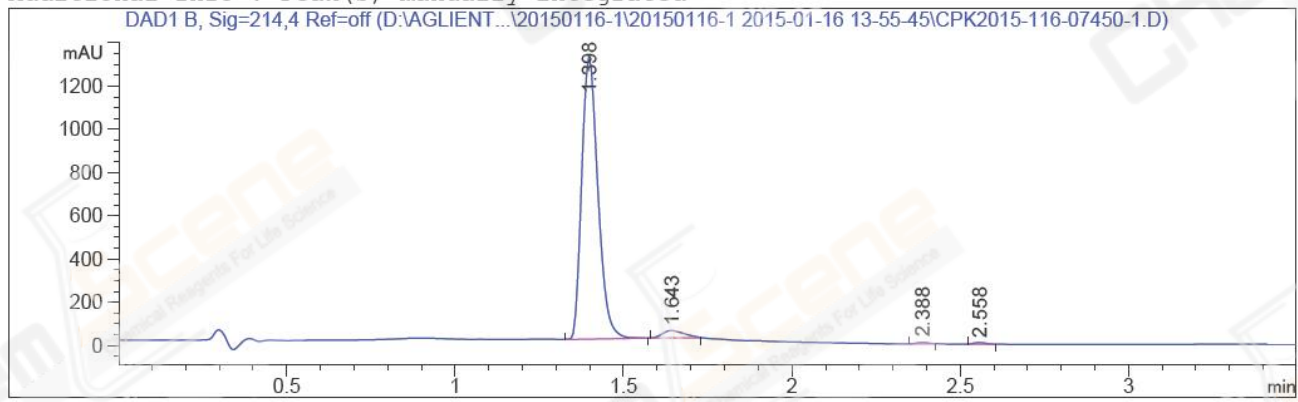


=====
Acq. Operator : Li Shan(LCMS-02) Seq. Line : 24
Acq. Instrument : HY-LCMS-02 Location : Vial 2
Injection Date : 1/16/2015 4:13:32 PM Inj : 1
Inj Volume : 3.000 µl
Different Inj Volume from Sample Entry Actual Inj Volume : 16.000 µl
Acq. Method : D:\AGLIENT 1260\DATA\20150116-1\20150116-1 2015-01-16 13-55-45\100-1500MS+
3MIN(0.02%FA).M
Last changed : 1/16/2015 2:49:26 PM by Li Shan(LCMS-02)
Analysis Method : D:\AGLIENT 1260\METHOD\BLHM-342_45-H01P(RP-HPLC).M
Last changed : 1/16/2015 4:23:29 PM by Li Shan(LCMS-02)
(modified after loading)
Method Info : hplc
Catalog No : CS-0578 Batch#07450
A-RP-124

Additional Info : Peak(s) manually integrated



=====
Area Percent Report
=====

Sorted By : Signal
Multiplier : 1.0000
Dilution : 1.0000
Do not use Multiplier & Dilution Factor with ISTDs

Signal 1: DAD1 B, Sig=214,4 Ref=off

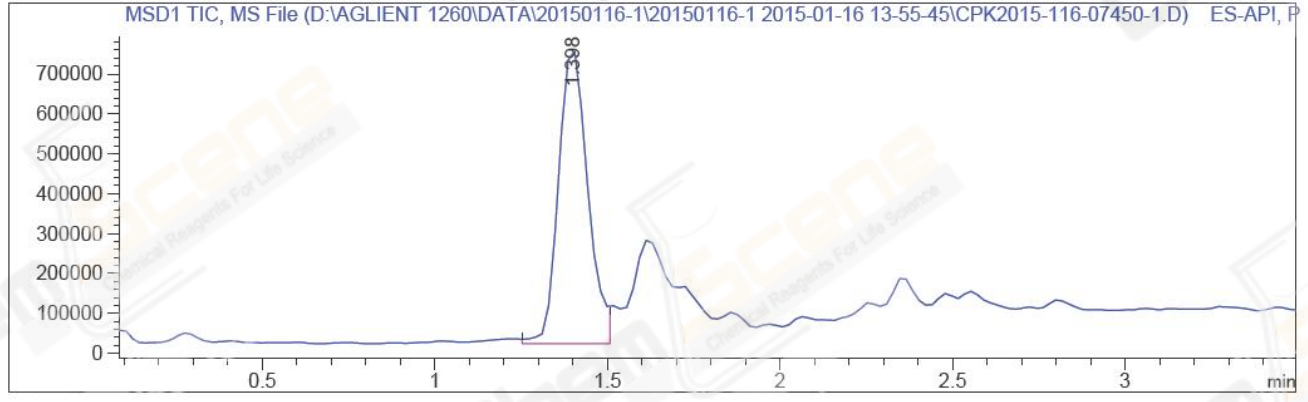
Peak #	RetTime [min]	Type	Width [min]	Area [mAU*s]	Height [mAU]	Area %
1	1.398	MM	0.0555	4367.41992	1311.29651	95.8968
2	1.643	MM	0.0751	155.26509	34.44736	3.4092
3	2.388	MM	0.0415	14.60825	5.86780	0.3208
4	2.558	MM	0.0417	17.00046	6.79474	0.3733

Totals : 4554.29372 1358.40641

=====
*** End of Report ***
=====

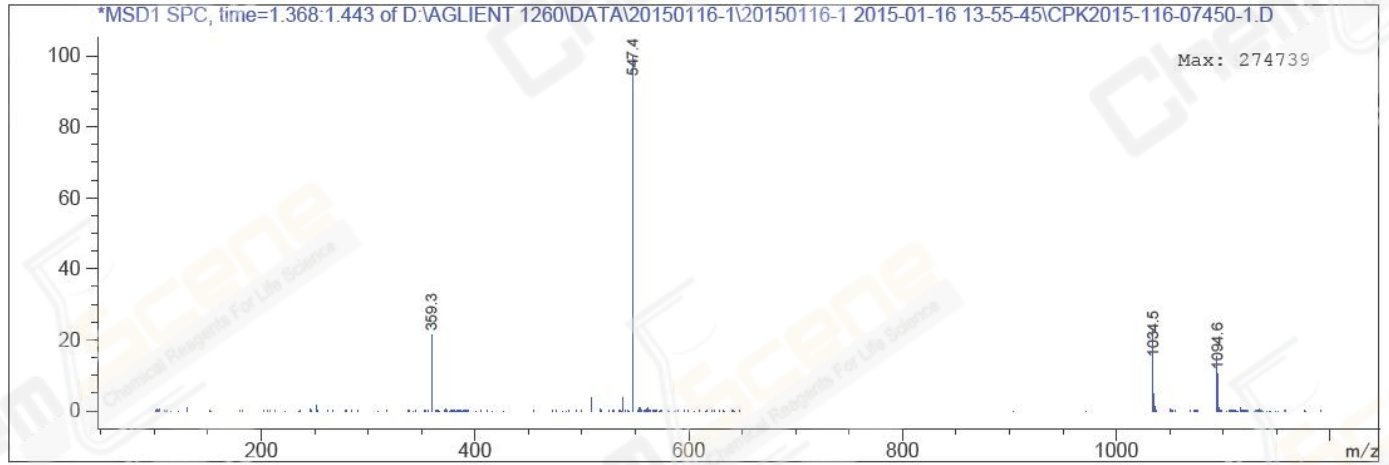
```
=====
Acq. Operator   : Li Shan(LCMS-02)                Seq. Line :   24
Acq. Instrument : HY-LCMS-02                      Location  : Vial 2
Injection Date  : 1/16/2015 4:13:32 PM           Inj       :    1
                                                    Inj Volume: 3.000 µl
Different Inj Volume from Sample Entry Actual Inj Volume : 16.000 µl
Acq. Method     : D:\AGLIENT 1260\DATA\20150116-1\20150116-1 2015-01-16 13-55-45\100-1500MS+
                 3MIN(0.02%FA).M
Last changed    : 1/16/2015 2:49:26 PM by Li Shan(LCMS-02)
Analysis Method : D:\AGLIENT 1260\METHOD\BLHM-342_45-H01P(RP-HPLC).M
Last changed    : 1/16/2015 4:24:41 PM by Li Shan(LCMS-02)
                 (modified after loading)
Method Info     : hplc
Catalog No     : CS-0578 Batch#07450
                 A-RP-124
=====
```

Additional Info : Peak(s) manually integrated



MS Signal: MSD1 TIC, MS File, ES-API, Pos, Scan, Frag: 50
Spectra averaged over upper half of peaks.
Noise Cutoff: 1000 counts.
Reportable Ion Abundance: > 10%.

Retention Time (MS)	MS Area	Mol. Weight or Ion
1.398	4344399	1094.60 I
		1093.55 I
		1034.50 I
		1033.50 I
		547.40 I
		359.30 I



*** End of Report ***