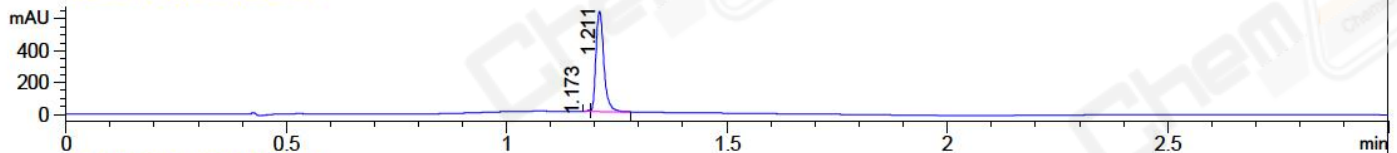
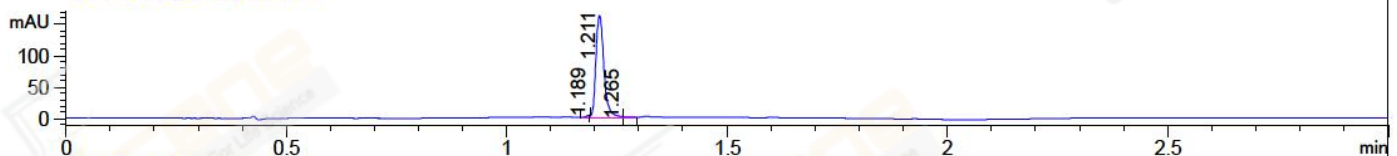


File ..ata\20170925\20170925 1\CPK2017-925-07899.D Tgt Mass (CHM):
 Injection Date : 25 Sep 17 7:33 pm +0800 Seq. Line : 118
 Sample Name : CPK2017-925-07899 Location : P2-A-11
 Acq. Operator : SYSTEM Inj : 1
 Spec. Reported : MS Integration Inj Volume : 1 ul
 Acq. Method : D:\LCMS03\Data\20170925\20170925 1\1-POS-3MIN.M
 Analysis Method : D:\LCMS03\Data\20170925\20170925 1\1-POS-3MIN.M
 Catalog No : CS-0152 Batch#07899
 Method Info : Mobile Phase: A: water(0.01%TFA) B:ACN(0.01%TFA)
 Gradient: 5% to 95%B within 1.3 min
 Flow Rate :1.8ml/min
 Column :SunFire C18, 4.6*50mm,3.5um A-RP-186
 Oven Temperature : 45C

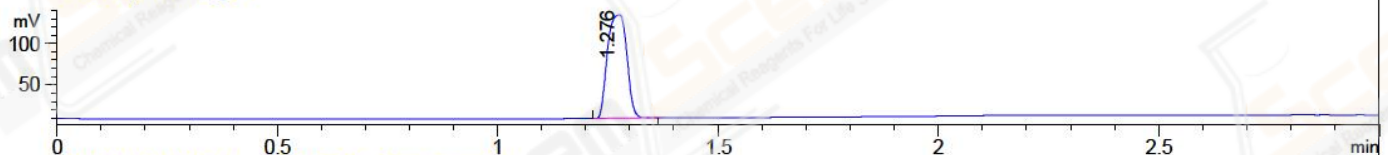
DAD1 A, Sig=214,4 Ref=off



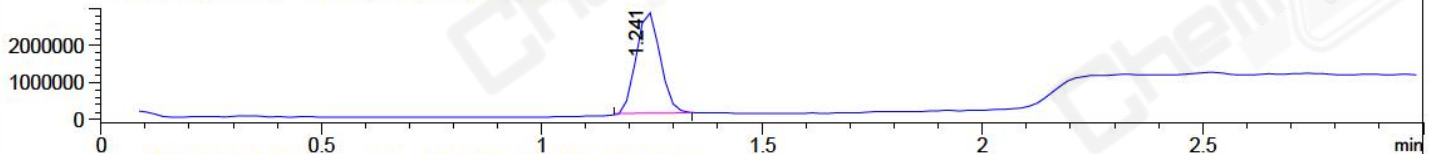
DAD1 B, Sig=254,4 Ref=off



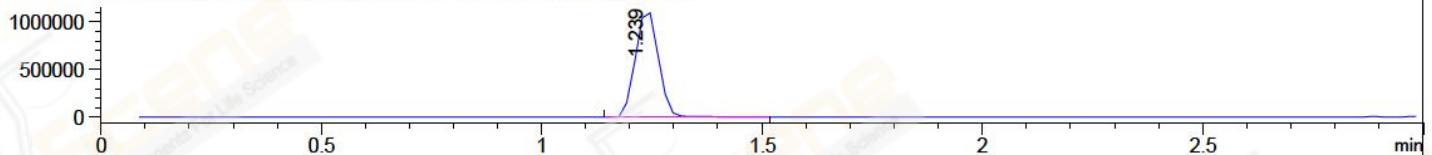
ELS1 A, ELSD Signal



MSD1 TIC, MS File ES-API, Pos, Scan, Frag: 70



Ion 474.6, MSD1 474.6, Target Mass 474.6 Positive, EIC=474.3:475.3



Integration Results for DAD1 A, Sig=214,4 Ref=off

RetTim	Width	Area	Height	Area%	MS (+)
1.17	0.01	4.42	0.32	0.56	475
1.21	0.02	786.35	628.82	99.44	475

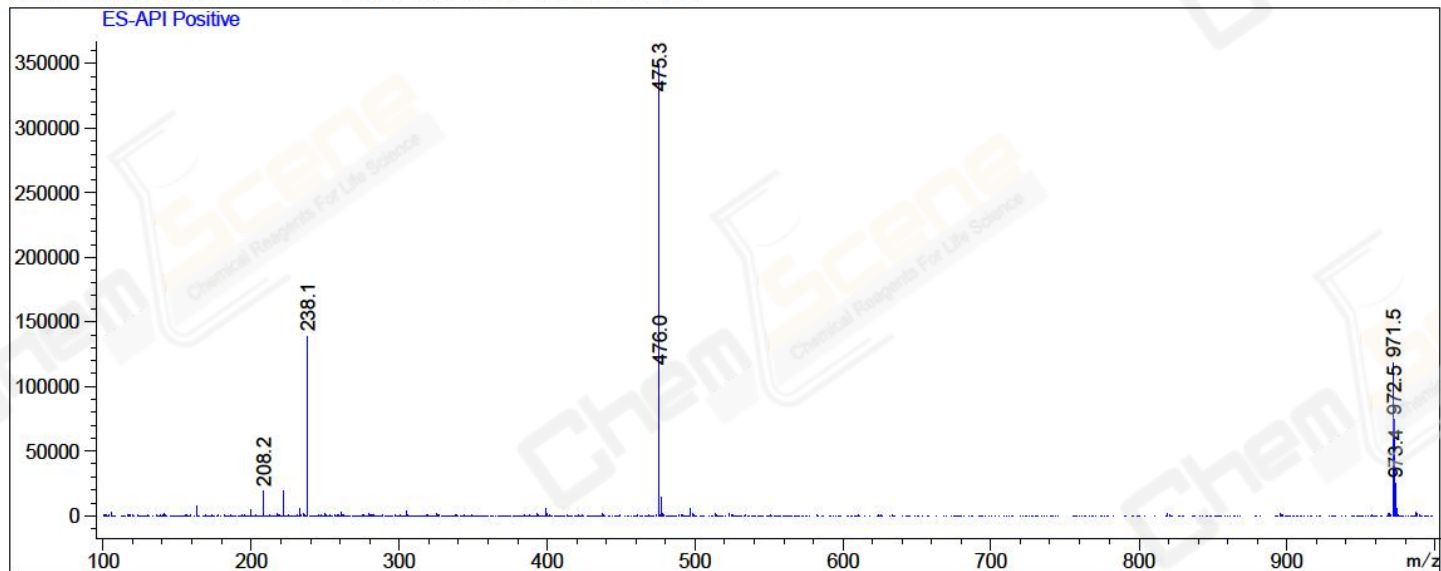
Integration Results for DAD1 B, Sig=254,4 Ref=off

RetTim	Width	Area	Height	Area%	MS (+)
1.19	0.01	1.68	3.64	0.81	475
1.21	0.02	203.62	161.94	98.77	475
1.26	0.01	0.86	1.01	0.42	475

Integration Results for MSD1 TIC, MS File

RetTim	Width	Area	Height	Area%	MS (+)
1.24	0.06	10386308.00	2789096.75	100.00	475

Ret. Time: 1.24 <<<< POSITIVE SPECTRA >>>>



*** End of Report ***