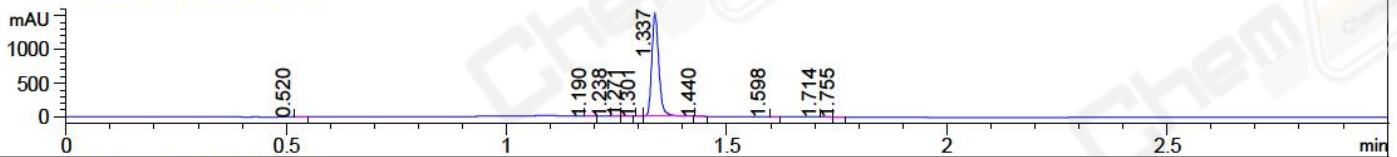
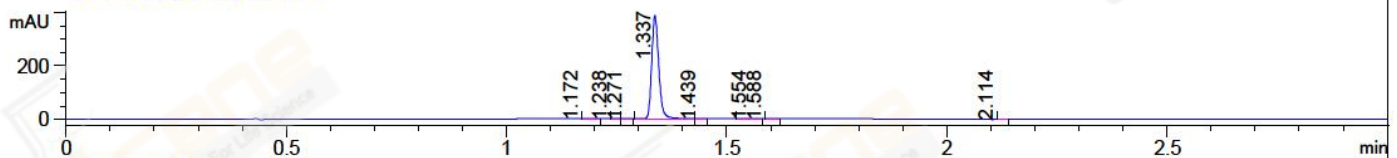


File ..\2018\20180228\20180228\CPK2018-223-07903.D Tgt Mass (CHM):
Injection Date : 28 Feb 18 7:58 pm +0800 Seq. Line : 128
Sample Name : CPK2018-223-07903 Location : P2-B-09
Acq. Operator : SYSTEM Inj : 1
Spec. Reported : MS Integration Inj Volume : 1 ul
Acq. Method : D:\LCMS03\Data\2018\20180228\20180228\1-POS-3MIN.M
Analysis Method : D:\LCMS03\Data\2018\20180228\20180228\1-POS-3MIN.M
Catalog No : CS-0971 Batch#07903
Method Info : Mobile Phase: A: water(0.01%TFA) B:ACN(0.01%TFA)
Gradient: 5% to 95%B within 1.3 min
Flow Rate :1.8ml/min
Column :SunFire C18, 4.6*50mm,3.5um A-RP-186
Oven Temperature : 45C

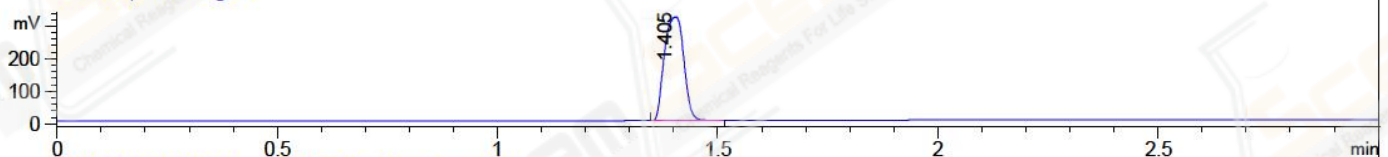
DAD1 A, Sig=214,4 Ref=off



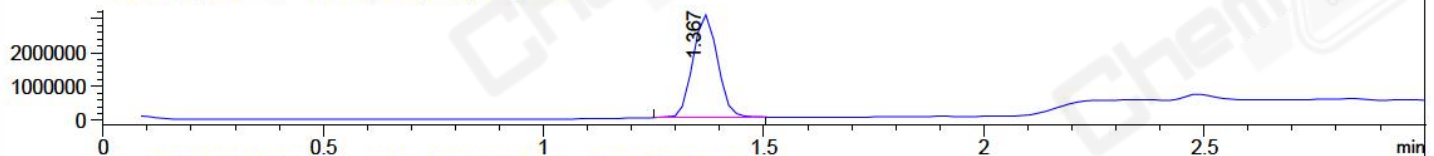
DAD1 B, Sig=254,4 Ref=off



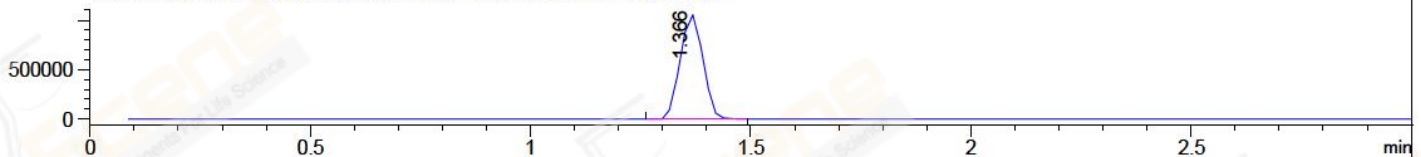
ELS1 A, ELSD Signal



MSD1 TIC, MS File ES-API, Pos, Scan, Frag: 70



Ion 464.6, MSD1 464.6, Target Mass 463.6 +H Positive, EIC=464.3:465.3



Integration Results for DAD1 A, Sig=214,4 Ref=off

RetTim	Width	Area	Height	Area%	MS (+)
0.52	0.02	2.80	0.26	0.17	102
1.19	0.02	0.78	0.77	0.05	374
1.24	0.01	2.77	-0.27	0.16	358
1.27	0.02	3.53	3.48	0.21	263
1.30	0.01	0.21	0.35	0.01	233
1.34	0.02	1678.64	1511.27	99.23	233
1.44	0.01	1.12	1.26	0.07	950
1.60	0.01	0.34	0.05	0.02	233
1.71	0.02	0.66	0.18	0.04	233
1.75	0.02	0.76	0.77	0.04	233

Integration Results for DAD1 B, Sig=254,4 Ref=off

RetTim	Width	Area	Height	Area%	MS (+)
1.17	0.02	0.74	0.04	0.17	374
1.24	0.02	0.95	0.07	0.22	358
1.27	0.02	1.30	1.20	0.30	263
1.34	0.02	428.12	384.14	99.10	233

1.44	0.01	0.21	0.26	0.05	950
1.55	0.02	0.16	0.12	0.04	233
1.59	0.02	0.33	-0.01	0.08	233
2.11	0.02	0.23	0.01	0.05	105

Integration Results for ELS1 A, ELSD Signal

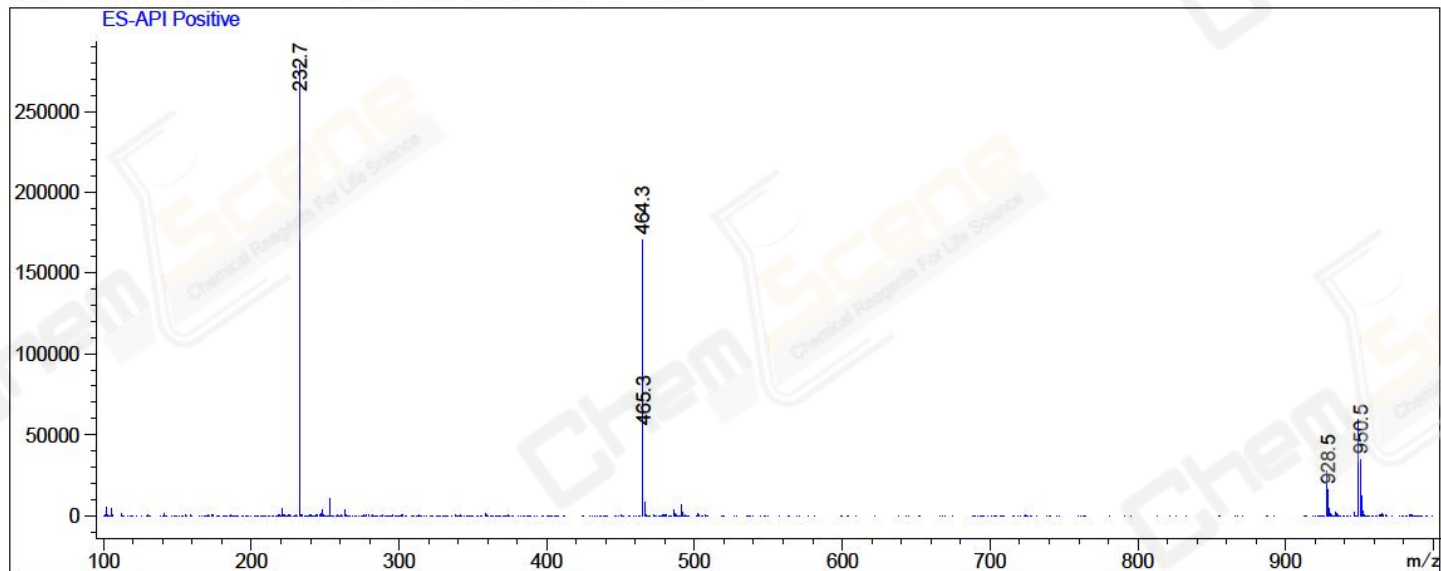
RetTim	Width	Area	Height	Area%	MS (+)
1.41	0.05	971.22	317.88	100.00	233

Integration Results for MSD1 TIC, MS File

RetTim	Width	Area	Height	Area%	MS (+)
1.37	0.06	11698129.00	3073797.75	100.00	233

Ret. Time: 1.37

<<<< POSITIVE SPECTRA >>>>



*** End of Report ***