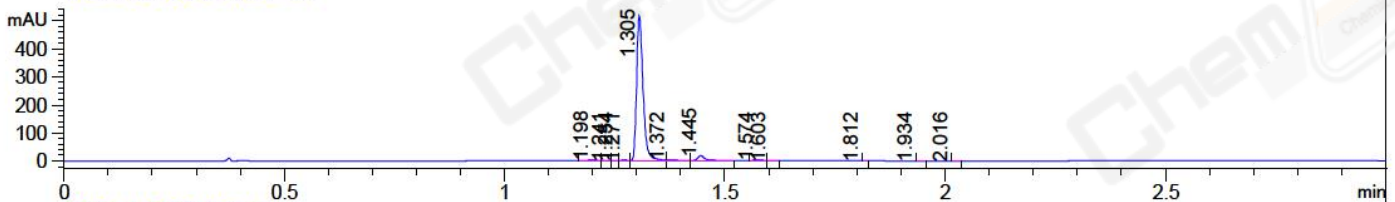
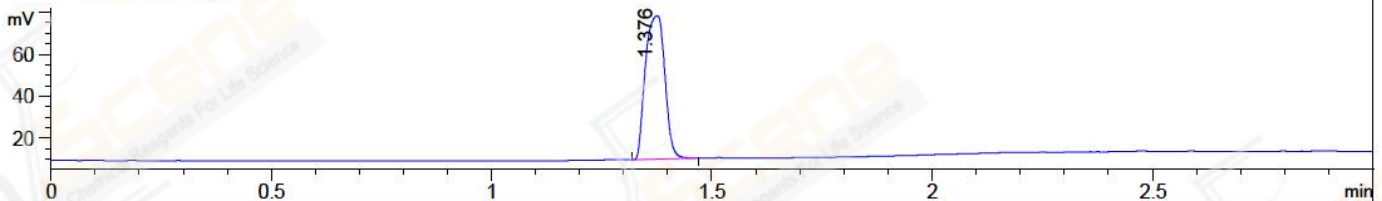


File ..018\20180315\20180315-2\CPK2018-315-08011.D Tgt Mass (CHM):
 Injection Date : 15 Mar 18 9:42 pm +0800 Seq. Line : 83
 Sample Name : CPK2018-315-08011 Location : P2-B-09
 Acq. Operator : SYSTEM Inj : 1
 Spec. Reported : MS Integration Inj Volume : 1 ul
 Acq. Method : D:\LCMS03\Data\2018\20180315\20180315-2\1-POS-3MIN.M
 Analysis Method : D:\LCMS03\Data\2018\20180315\20180315-2\1-POS-3MIN.M
 Catalog No : CS-0701 Batch#08011
 Method Info : Mobile Phase: A: water(0.01%TFA) B:ACN(0.01%TFA)
 Gradient: 5% to 95%B within 1.3 min
 Flow Rate :1.8ml/min
 Column :SunFire C18, 4.6*50mm,3.5um A-RP-186
 Oven Temperature : 45C

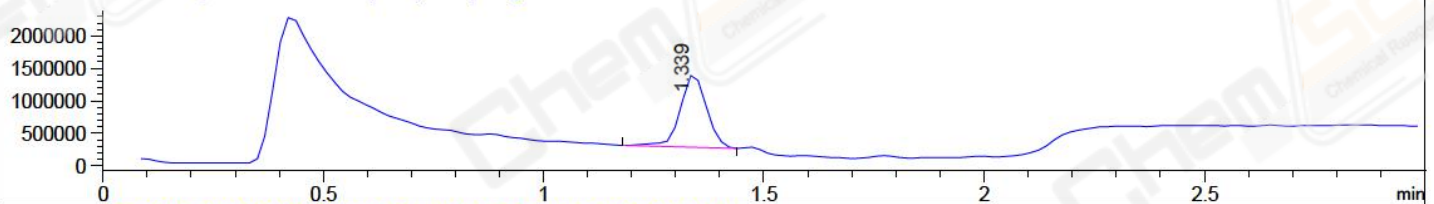
DAD1 B, Sig=254,4 Ref=off



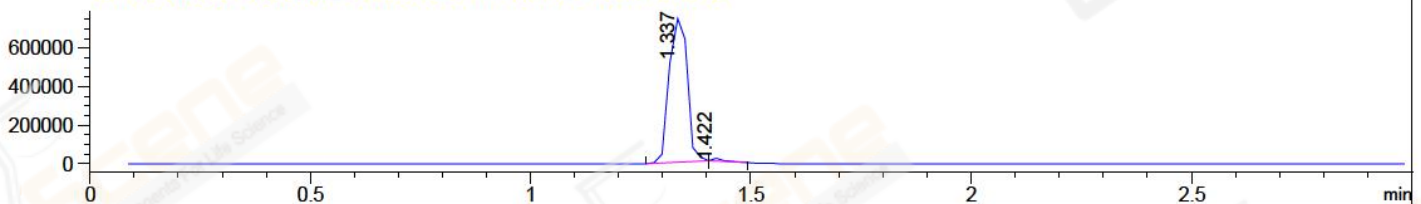
ELS1 A, ELSD Signal



MSD1 TIC, MS File ES-API, Pos, Scan, Frag: 70



Ion 463.6, MSD1 463.6, Target Mass 462.6 +H Positive, EIC=463.3:464.3



Integration Results for DAD1 B, Sig=254,4 Ref=off

RetTim	Width	Area	Height	Area%	MS (+)
1.20	0.01	2.46	2.75	0.45	157
1.24	0.01	0.12	0.16	0.02	157
1.25	0.02	0.36	0.39	0.06	157
1.27	0.02	0.51	0.55	0.09	157
1.31	0.02	523.24	516.82	95.66	463
1.37	0.02	1.77	1.40	0.32	157
1.44	0.02	16.46	16.38	3.01	157
1.57	0.01	1.54	1.63	0.28	157
1.60	0.01	0.16	0.18	0.03	157
1.81	0.01	0.07	0.02	0.01	233
1.93	0.01	0.21	0.01	0.04	105
2.02	0.01	0.10	0.02	0.02	105

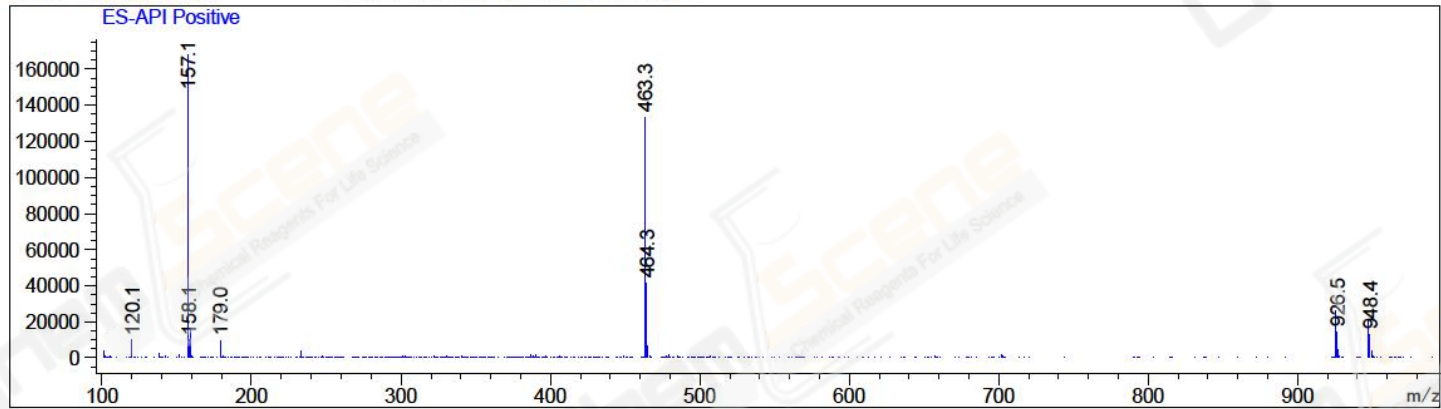
Integration Results for ELS1 A, ELSD Signal

RetTim	Width	Area	Height	Area%	MS (+)
1.38	0.05	208.98	68.27	100.00	463

Integration Results for MSD1 TIC, MS File

RetTim	Width	Area	Height	Area%	MS (+)
1.34	0.06	4672209.00	1129151.75	100.00	157

Ret. Time: 1.34 <<<< POSITIVE SPECTRA >>>>



*** End of Report ***