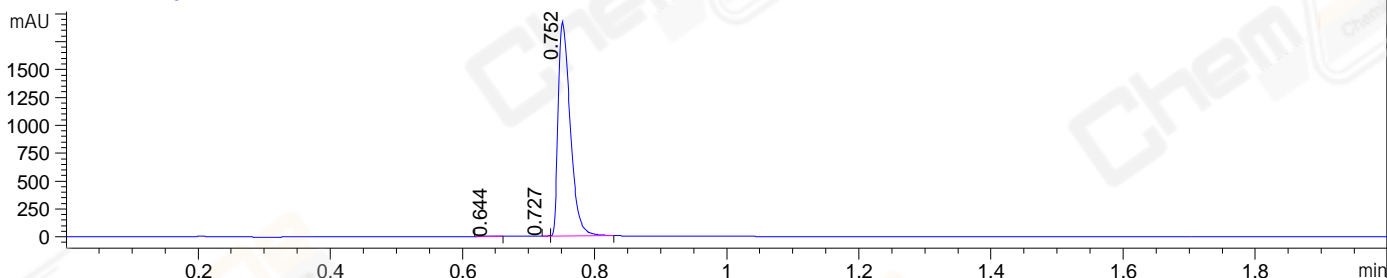
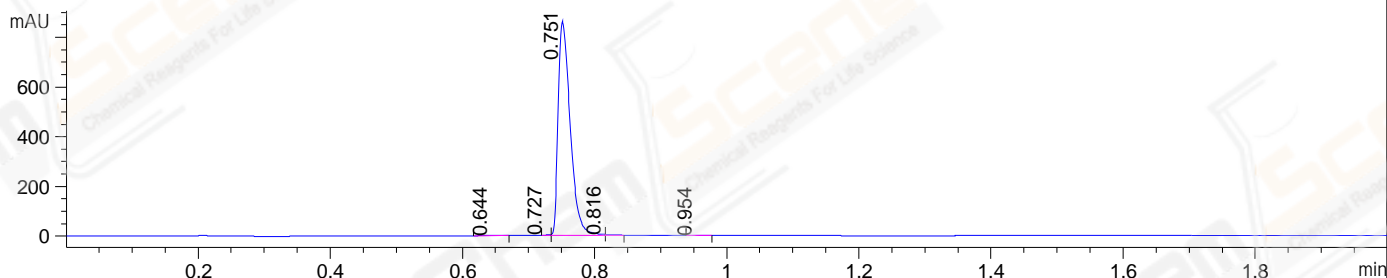


File ..04-18\CPK2023-418-08420-UPLC-MS-01-016444.D Tgt Mass (EZX):  
 Injection Date : 18 Apr 23 3:39 pm +0800 Seq. Line : 0  
 Sample Name : CPK2023-418-08420 Location : P2-D-09  
 Acq. Operator : LY\_2278 Inj : 1  
 Spec. Reported : MS Integration Inj Volume : 0.5 ul  
 Acq. Method : D:\LCMS\Methods\1-POS-UPLC2.0MIN(0.8ML)-(150-1000).M  
 Analysis Method : D:\LCMS\METHODS\1-POS-UPLC2.0MIN(0.8ML)-(150-1000).M  
 CAS NO. : 445430-58-0 Walkup method: '1-POS-2MIN' Project: CPK2023 Target:  
 Method Info : Mobile Phase: A: water(0.01%TFA) B:ACN(0.01%TFA)  
 Gradient: 5% to 95%B within 0.6 min  
 Flow Rate :0.8ml/min  
 Column :Poroshell 120 EC- C18, 2.1\*50mm,1.9um A-RP-517  
 Oven Temperature : 45C

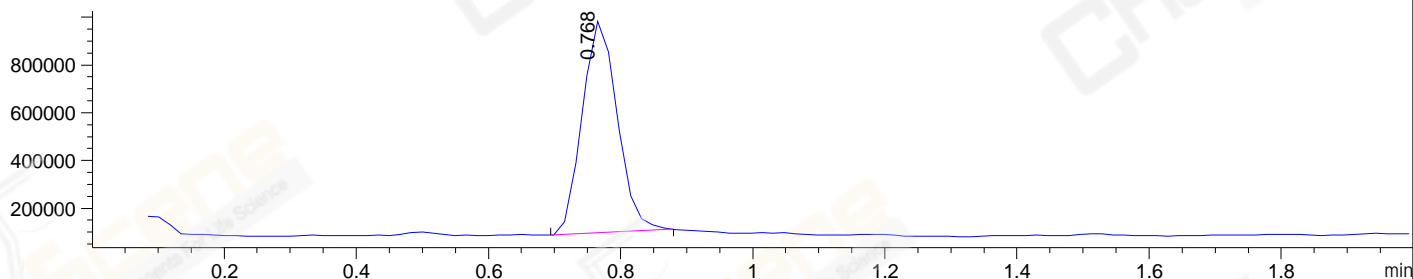
DAD1 A, Sig=214,4 Ref=off



DAD1 B, Sig=254,4 Ref=off



MSD1 TIC, MS File ES-API, Pos, Scan, Frag: 70



Integration Results for DAD1 A, Sig=214,4 Ref=off

RetTim	Width	Area	Height	Area%	MS (+)
0.64	0.01	1.17	1.17	0.05	256
0.73	0.01	2.37	4.90	0.10	256
0.75	0.02	2448.33	1923.83	99.86	256

Integration Results for DAD1 B, Sig=254,4 Ref=off

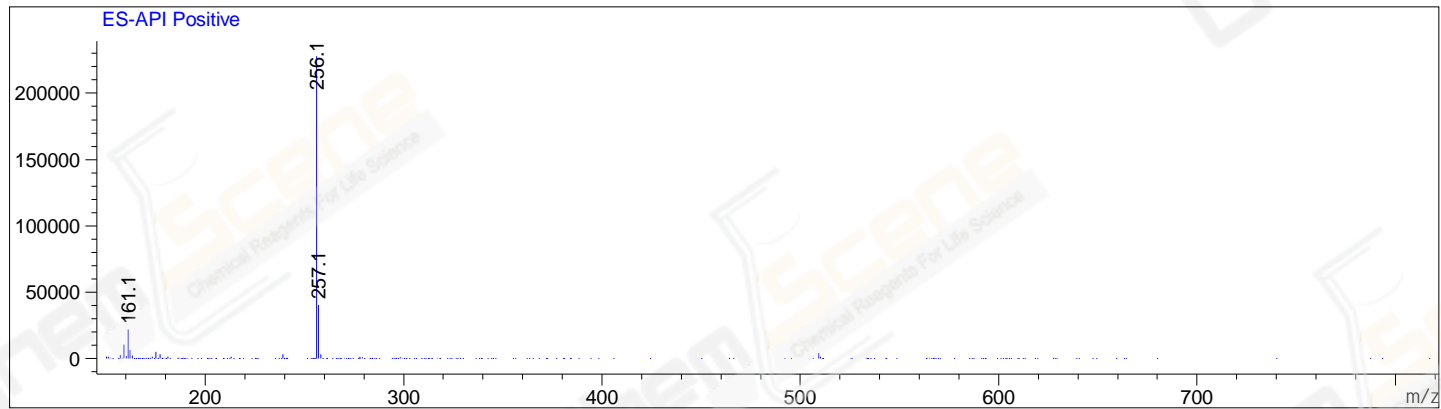
RetTim	Width	Area	Height	Area%	MS (+)
0.64	0.01	2.17	2.12	0.20	256
0.73	0.01	1.59	3.22	0.15	256
0.75	0.02	1092.79	861.80	99.41	256
0.82	0.01	2.48	3.10	0.23	161
0.95	0.02	0.27	0.26	0.02	161

Integration Results for MSD1 TIC, MS File

RetTim	Width	Area	Height	Area%	MS (+)
0.77	0.06	3279257.00	902848.25	100.00	256

Ret. Time: 0.77

<<<< POSITIVE SPECTRA >>>>



\*\*\* End of Report \*\*\*