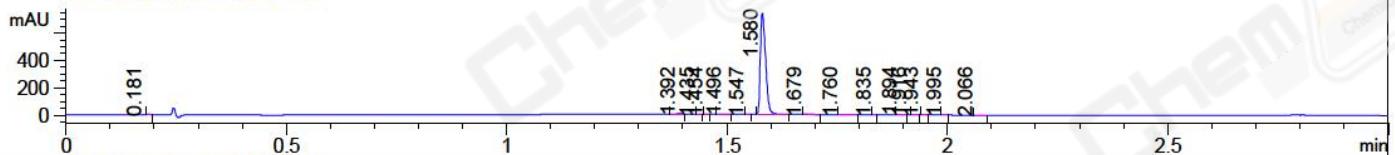
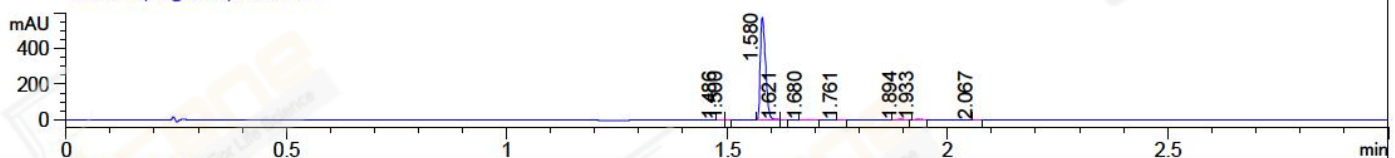


File ..ata\20171124\20171124-1\CPK2017-N23-08448.D Tgt Mass (CHM):
Injection Date : 24 Nov 17 1:06 pm +0800 Seq. Line : 46
Sample Name : CPK2017-N23-08448 Location : P1-E-01
Acq. Operator : SYSTEM Inj : 1
Spec. Reported : MS Integration Inj Volume : 1 ul
Acq. Method : D:\LCMS03\Data\20171124\20171124-1\1-POS-3MIN(1.2ML).M
Analysis Method : D:\LCMS03\Data\20171124\20171124-1\1-POS-3MIN(1.2ML).M
Catalog No : CS-0472 Batch#08448
Method Info : Mobile Phase: A: water(0.01%TFA) B:ACN(0.01%TFA)
Gradient: 5% to 95%B within 1.3 min
Flow Rate :1.2ml/min
Column :Poroshell 120 EC-C18, 3.0*50mm,2.7um A-RP-170
Oven Temperature : 45C

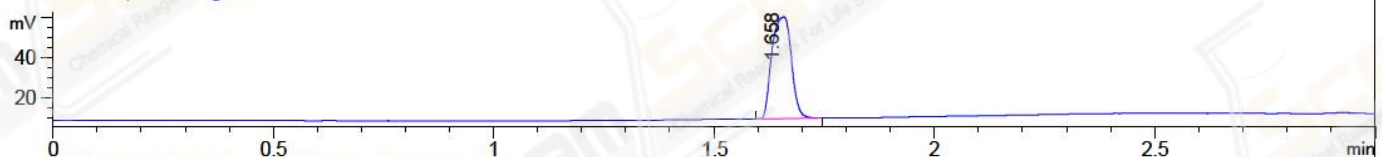
DAD1 A, Sig=214,4 Ref=off



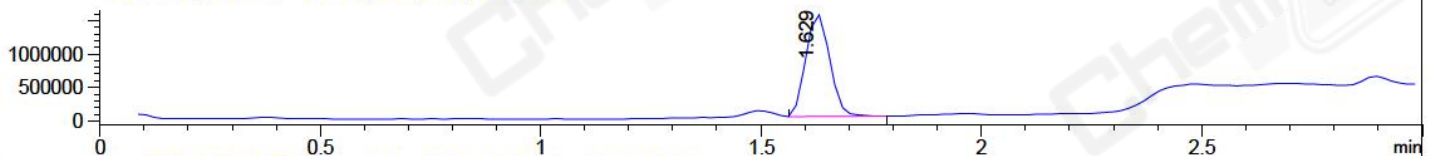
DAD1 B, Sig=254,4 Ref=off



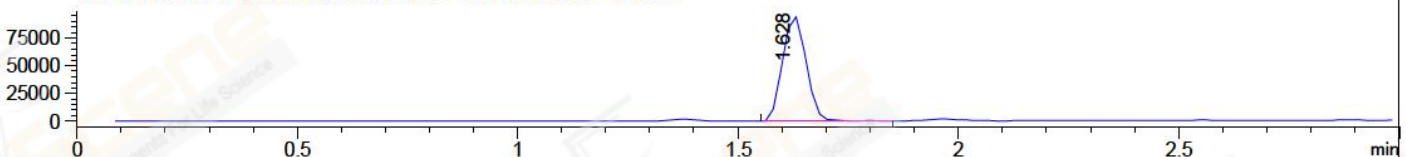
ELS1 A, ELSD Signal



MSD1 TIC, MS File ES-API, Pos, Scan, Frag: 70



Ion 437.3, MSD1 437.3, Target Mass 436.3 +H Positive, EIC=437:438



Integration Results for DAD1 A, Sig=214,4 Ref=off

RetTim	Width	Area	Height	Area%	MS (+)
0.18	0.01	1.27	-0.14	0.21	172
1.39	0.01	2.72	3.84	0.44	172
1.44	0.01	0.21	0.44	0.03	172
1.45	0.01	0.26	0.58	0.04	702
1.50	0.02	1.83	1.92	0.30	702
1.55	0.01	0.05	0.11	0.01	380
1.58	0.01	607.98	734.18	98.50	438
1.68	0.01	0.31	0.29	0.05	436
1.76	0.01	0.28	0.32	0.05	233
1.84	0.01	0.02	0.07	0.00	233
1.89	0.01	1.39	2.29	0.23	233
1.92	0.01	0.43	0.06	0.07	233
1.94	0.01	0.11	0.30	0.02	233
2.00	0.01	0.15	0.20	0.02	233
2.07	0.02	0.20	0.18	0.03	233

Integration Results for DAD1 B, Sig=254,4 Ref=off

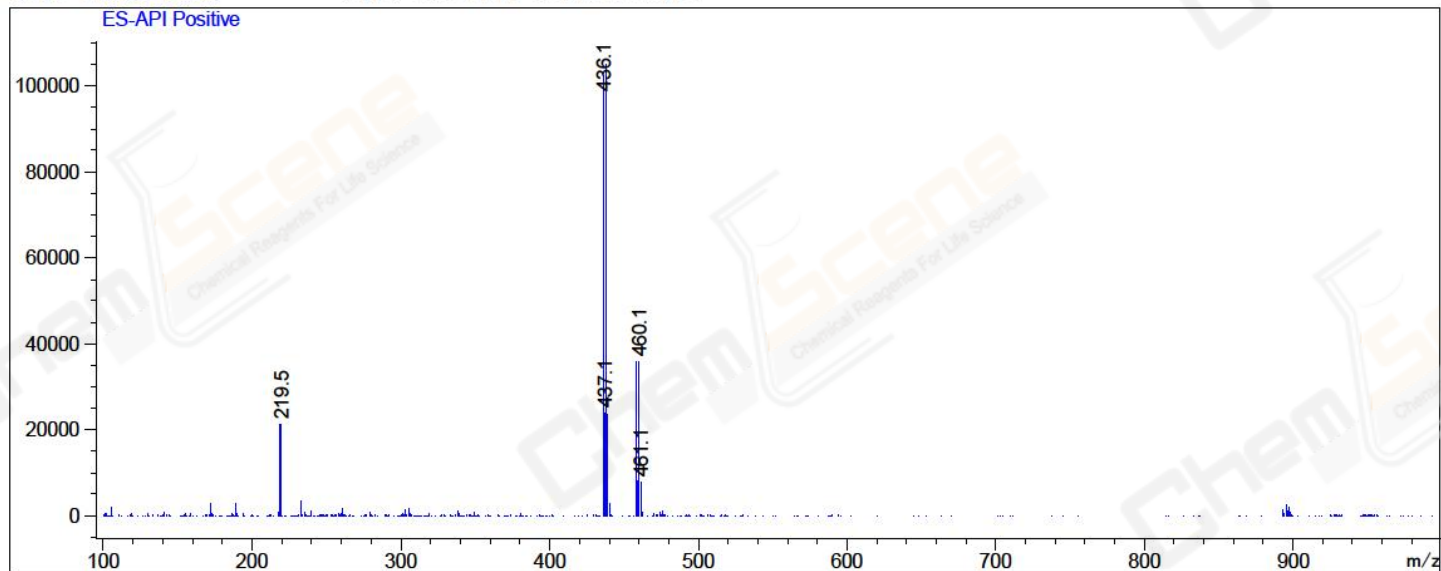
RetTim	Width	Area	Height	Area%	MS (+)
--------	-------	------	--------	-------	--------

1.49	0.01	0.55	1.16	0.11	702
1.50	0.01	0.16	0.32	0.03	702
1.58	0.01	476.41	576.98	99.07	438
1.62	0.01	0.56	1.11	0.12	438
1.68	0.02	0.53	0.43	0.11	436
1.76	0.01	0.12	0.23	0.03	233
1.89	0.01	1.25	1.91	0.26	233
1.93	0.02	0.91	0.69	0.19	233
2.07	0.01	0.38	0.64	0.08	233

Integration Results for MSD1 TIC, MS File

RetTim	Width	Area	Height	Area%	MS (+)
1.63	0.06	5784818.50	1536345.88	100.00	438

Ret. Time: 1.63 <<<< POSITIVE SPECTRA >>>>



*** End of Report ***