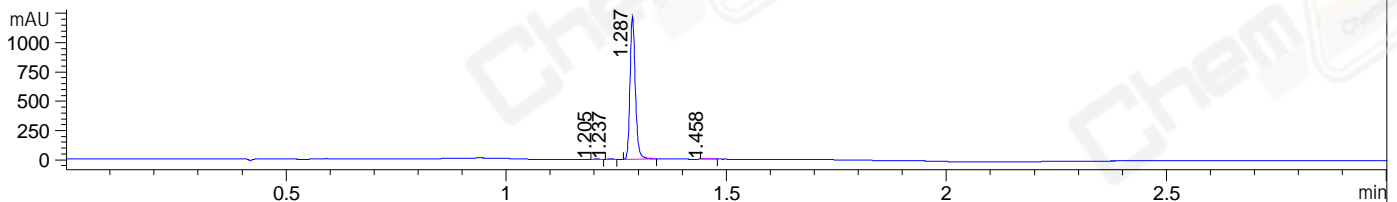
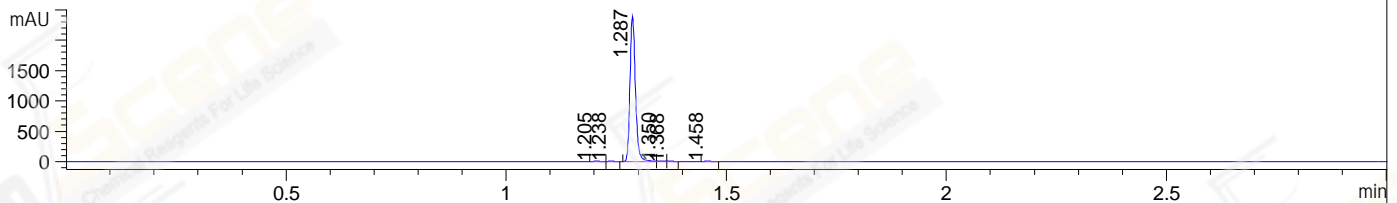


File ..DATA\2020\20201106\1146\CPK2020-N06-08553.D Tgt Mass (CHM):
Injection Date : 6 Nov 20 6:43 pm +0800 Seq. Line : 106
Sample Name : CPK2020-N06-08553 Location : P1-D-05
Acq. Operator : zyj_1547 Inj : 1
Spec. Reported : MS Integration Inj Volume : 1 ul
Acq. Method : D:\Chem32\1\data\2020\20201106\1146\1-POS-3MIN.M
Analysis Method : D:\CHEM32\1\DATA\2020\20201106\1146\1-POS-3MIN.M
Catalog No : CS-0259
Method Info : Mobile Phase: A: water(0.01%TFA) B:ACN(0.01%TFA)
Gradient: 5% to 95%B within 1.3 min
Flow Rate :1.8ml/min
Column :SunFire C18, 4.6*50mm,3.5um A-RP-698

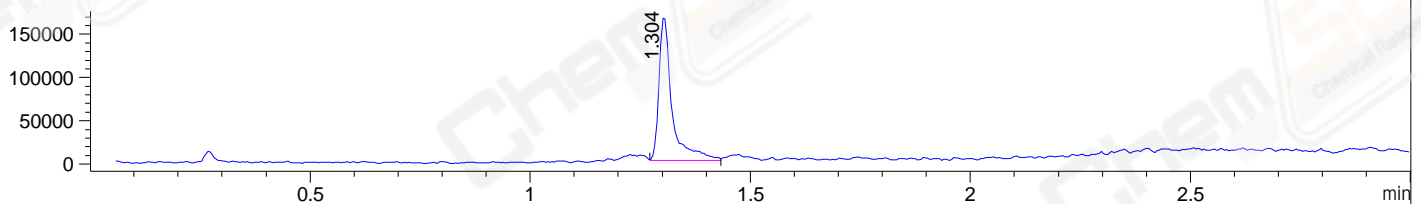
DAD1 B, Sig=214,4 Ref=off



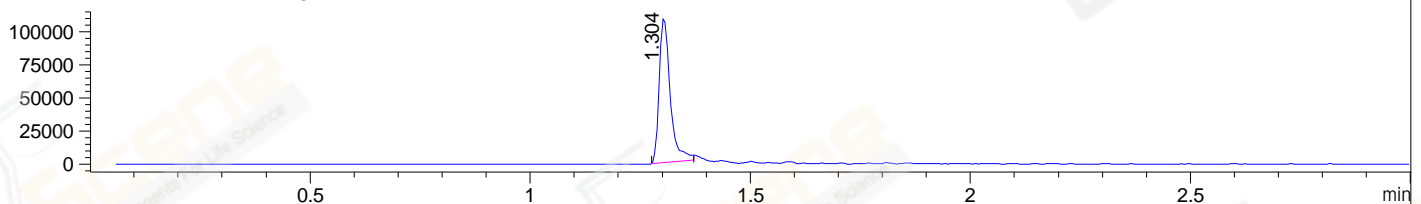
DAD1 C, Sig=254,4 Ref=off



MSD1 TIC, MS File ES-API, Pos, Scan, Frag: 70



Ion 592, MSD1 592, Target Mass 591 +H Positive, EIC=591.7:592.7



Integration Results for DAD1 B, Sig=214,4 Ref=off

RetTim	Width	Area	Height	Area%	MS (+)
1.21	0.01	2.76	3.09	0.27	466
1.24	0.01	2.39	3.26	0.23	466
1.29	0.01	1030.10	1220.40	99.06	592
1.46	0.01	4.61	5.05	0.44	592

Integration Results for DAD1 C, Sig=254,4 Ref=off

RetTim	Width	Area	Height	Area%	MS (+)
1.20	0.02	8.71	8.10	0.41	466
1.24	0.01	6.52	7.65	0.31	466
1.29	0.01	2077.83	2396.16	98.50	592
1.35	0.02	5.96	5.42	0.28	592
1.37	0.02	3.51	3.18	0.17	592
1.46	0.01	6.97	7.95	0.33	718

Integration Results for MSD1 TIC, MS File

RetTim	Width	Area	Height	Area%	MS (+)
--------	-------	------	--------	-------	--------

-----|-----|-----|-----|-----|-----|
1.30 0.03 342331.63 167770.89 100.00 592

Ret. Time: 1.30

<<<< POSITIVE SPECTRA >>>>

ES-API Positive

