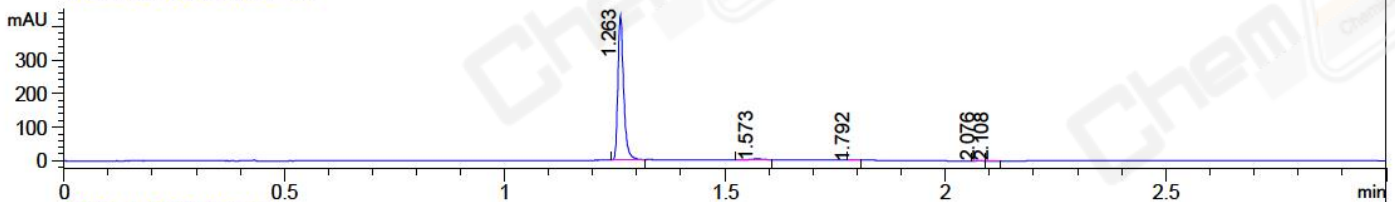
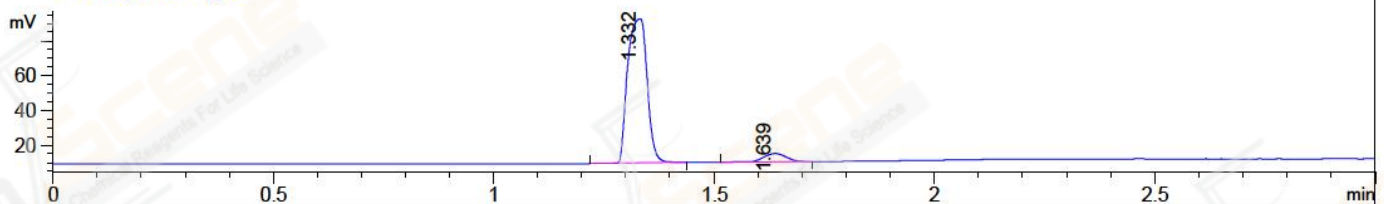


File ..a\20171114\20171114-1 1\CPK2017-N14-08693.D Tgt Mass (CHM):
 Injection Date : 14 Nov 17 8:42 pm +0800 Seq. Line : 100
 Sample Name : CPK2017-N14-08693 Location : P2-F-02
 Acq. Operator : SYSTEM Inj : 1
 Spec. Reported : MS Integration Inj Volume : 1 ul
 Acq. Method : D:\LCMS03\Data\20171114\20171114-1 1\1-POS-3MIN.M
 Analysis Method : D:\LCMS03\Data\20171114\20171114-1 1\1-POS-3MIN.M
 Catalog No : CS-1333 Batch#08693
 Method Info : Mobile Phase: A: water(0.01%TFA) B:ACN(0.01%TFA)
 Gradient: 5% to 95%B within 1.3 min
 Flow Rate :1.8ml/min
 Column :SunFire C18, 4.6*50mm,3.5um A-RP-186
 Oven Temperature : 45C

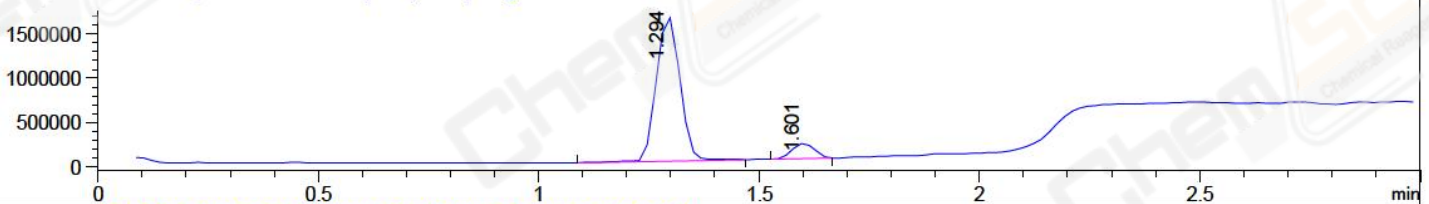
DAD1 B, Sig=254,4 Ref=off



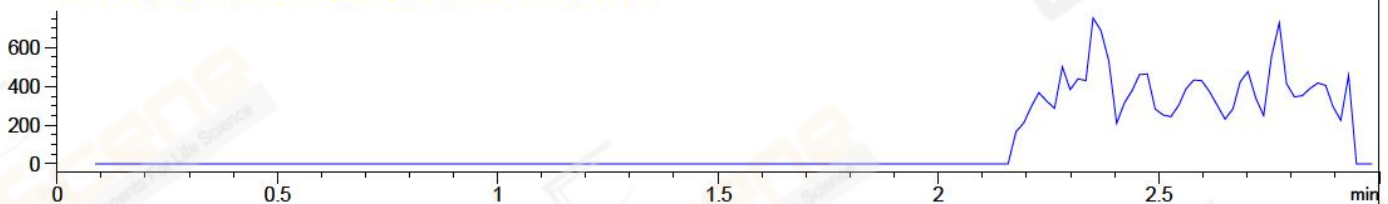
ELS1 A, ELSD Signal



MSD1 TIC, MS File ES-API, Pos, Scan, Frag: 70



Ion 739.3, MSD1 739.3, Target Mass 738.3 +H Positive, EIC=739:740



Integration Results for DAD1 B, Sig=254,4 Ref=off

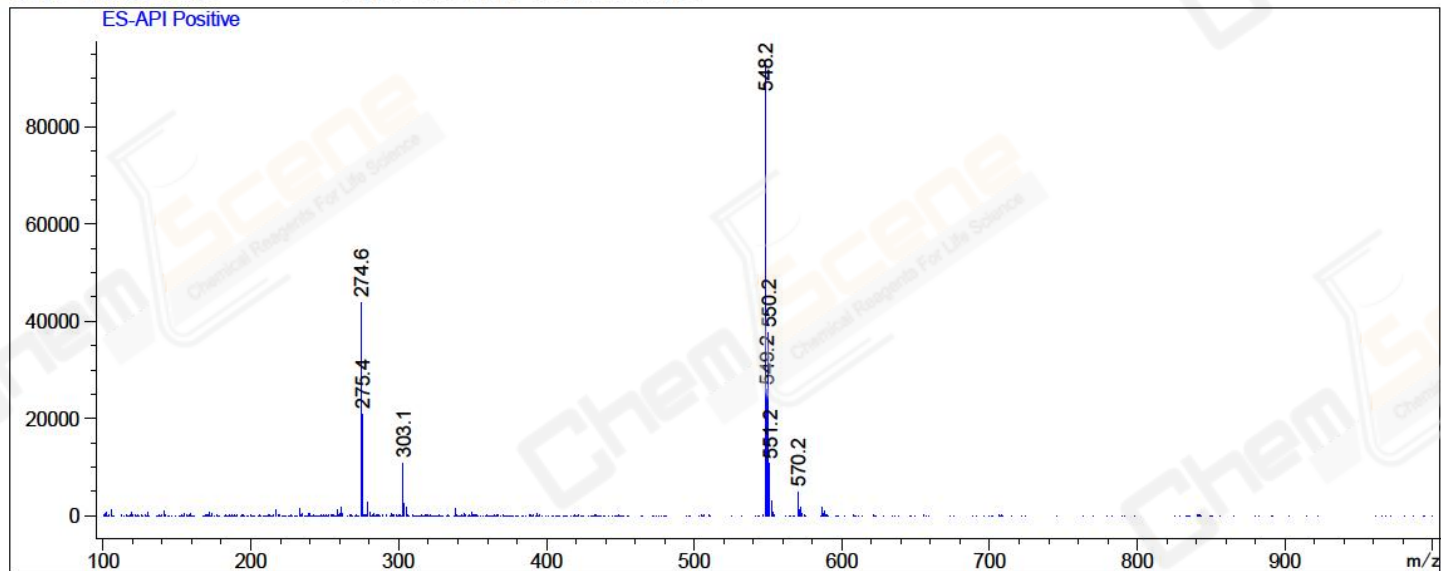
RetTim	Width	Area	Height	Area%	MS (+)
1.26	0.01	390.60	427.67	98.30	548
1.57	0.03	4.80	2.76	1.21	303
1.79	0.02	0.15	0.15	0.04	105
2.08	0.02	1.16	1.20	0.29	105
2.11	0.02	0.63	0.42	0.16	105

Integration Results for MSD1 TIC, MS File

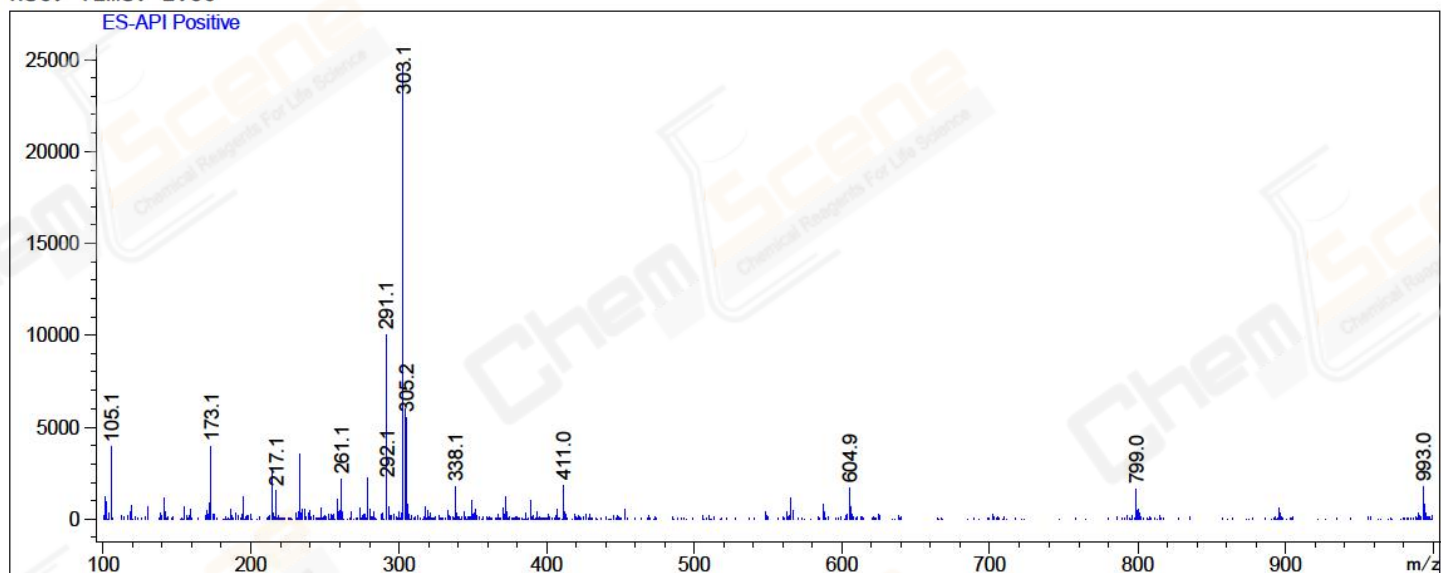
RetTim	Width	Area	Height	Area%	MS (+)
1.29	0.06	6012593.50	1639389.13	90.63	548
1.60	0.06	621638.88	171552.19	9.37	303

Ret. Time: 1.29

<<<< POSITIVE SPECTRA >>>>



Ret. Time: 1.60



*** End of Report ***