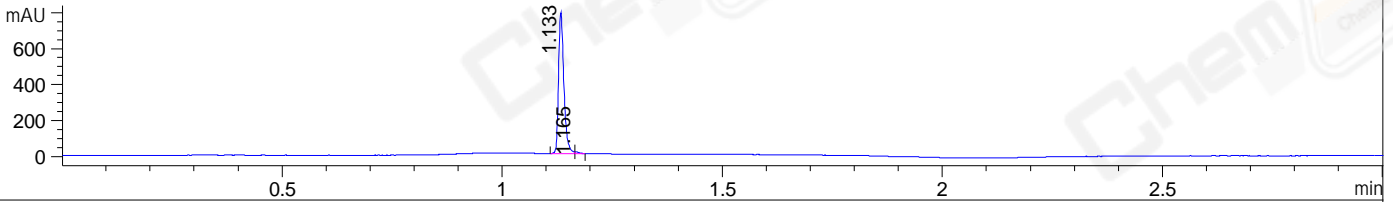
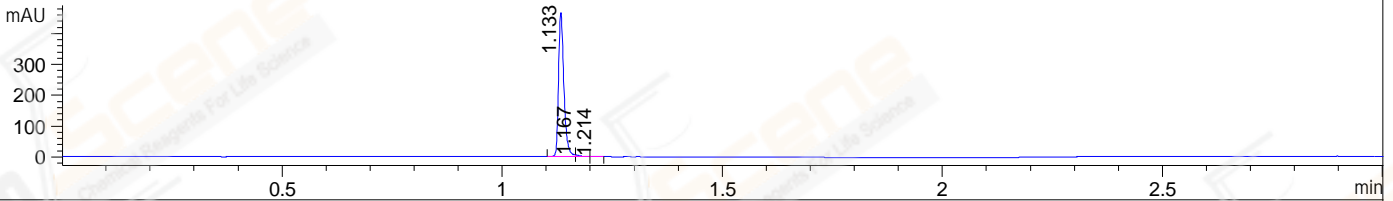


File ..DATA\2020\20200609\987\CPK2020-608-08876-.D Tgt Mass (CHM):
Injection Date : 10 Jun 20 5:50 am +0800 Seq. Line : 151
Sample Name : CPK2020-608-08876 Location : P1-B-07
Acq. Operator : ZJ_1432 Inj : 1
Spec. Reported : MS Integration Inj Volume : 0.4 ul
Acq. Method : D:\Chem32\1\data\2020\20200609\987\1-POS-3MIN.M
Analysis Method : D:\CHEM32\1\DATA\2020\20200609\987\1-POS-3MIN.M
CAS NO. : 891494-63-6
Method Info : Mobile Phase: A: water(0.01%TFA) B:ACN(0.01%TFA)
Gradient: 5% to 95%B within 1.3 min
Flow Rate :1.8ml/min
Column :SunFire C18, 4.6*50mm,3.5um A-RP-607
Oven Temperature : 45□

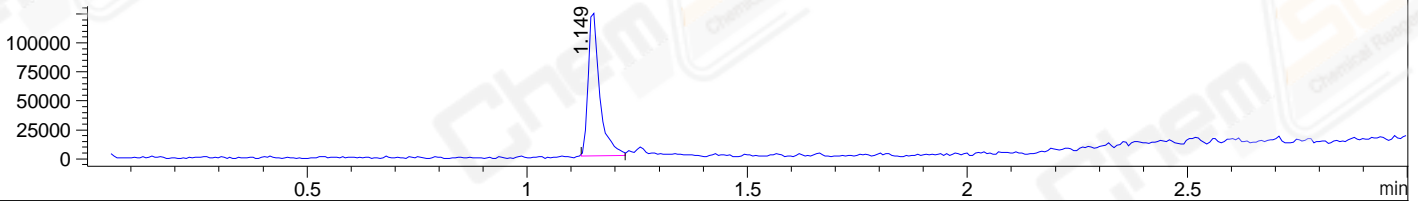
DAD1 B, Sig=214,4 Ref=off



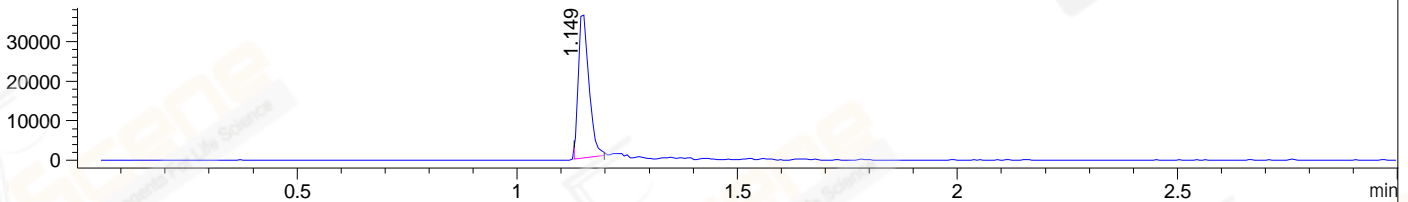
DAD1 C, Sig=254,4 Ref=off



MSD1 TIC, MS File ES-API, Pos, Scan, Frag: 70



Ion 376, MSD1 376, Target Mass 375 +H Positive, EIC=375.7:376.7



Integration Results for DAD1 B, Sig=214,4 Ref=off

RetTim	Width	Area	Height	Area%	MS(+)
1.13	0.01	659.35	785.74	99.00	376
1.16	0.01	6.64	10.99	1.00	376

Integration Results for DAD1 C, Sig=254,4 Ref=off

RetTim	Width	Area	Height	Area%	MS(+)
1.13	0.01	393.24	468.71	98.68	376
1.17	0.01	4.00	6.19	1.00	376
1.21	0.01	1.26	1.57	0.32	376

Integration Results for MSD1 TIC, MS File

RetTim	Width	Area	Height	Area%	MS(+)
1.15	0.02	225512.50	126784.30	100.00	376

Ret. Time: 1.15

<<<< POSITIVE SPECTRA >>>>

ES-API Positive

