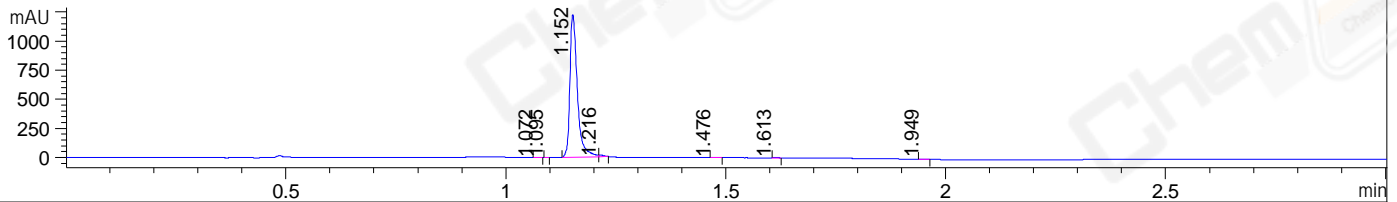


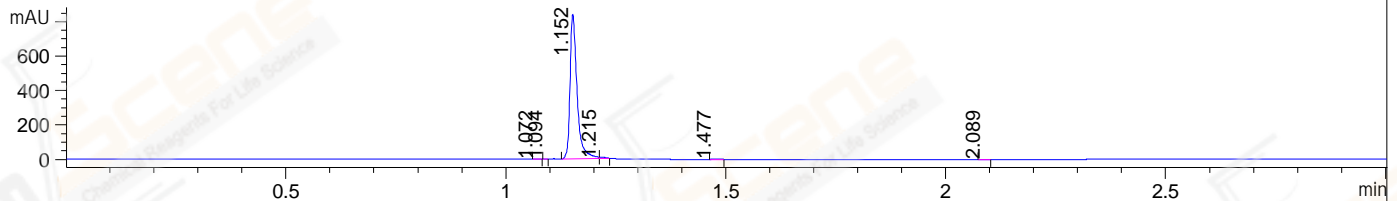
File ..\DATA\2019\20190307\548\CPK2019-306-08884.D Tgt Mass (CHM):

Injection Date : 7 Mar 19 11:17 am +0800 Seq. Line : 22
 Sample Name : CPK2019-306-08884 Location : P2-D-02
 Acq. Operator : LQ_1052 Inj : 1
 Spec. Reported : MS Integration Inj Volume : 1 ul
 Acq. Method : D:\Chem32\1\data\2019\20190307\548\1-POS-3MIN-1.M
 Analysis Method : D:\CHEM32\1\DATA\2019\20190307\548\1-POS-3MIN-1.M
 CAS NO. : 891494-63-6
 Method Info : Mobile Phase: A: water(0.01%TFA) B:ACN(0.01%TFA)
 Gradient: 5% to 95%B within 1.3 min
 Flow Rate :1.8ml/min
 Column :SunFire C18, 4.6*50mm,3.5um A-RP-314
 Oven Temperature : 45□

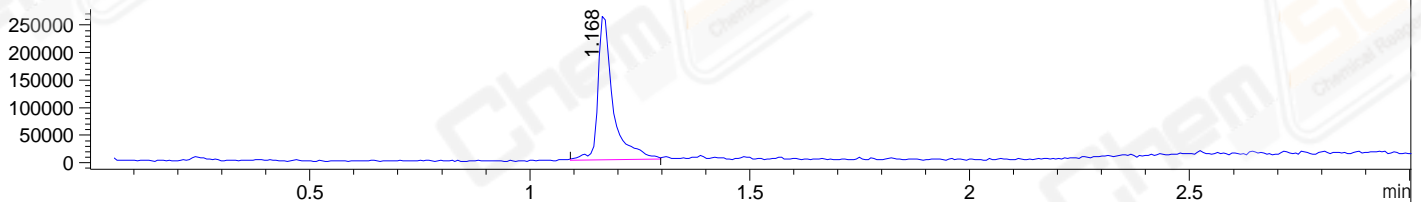
DAD1 B, Sig=214,4 Ref=off



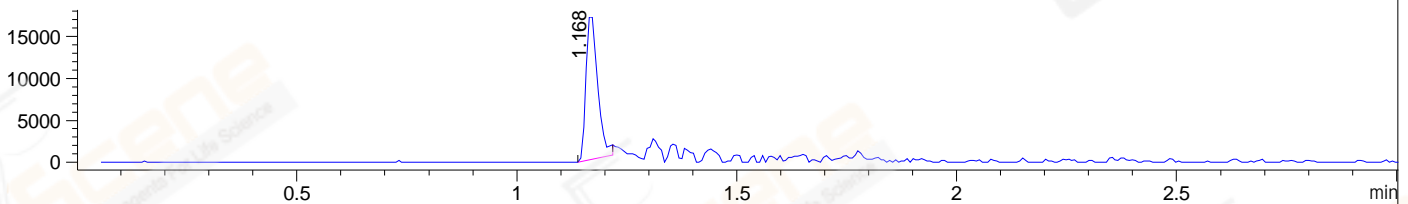
DAD1 C, Sig=254,4 Ref=off



MSD1 TIC, MS File ES-API, Pos, Scan, Frag: 70



Ion 377.3, MSD1 377.3, Target Mass 376.3 +H Positive, EIC=377:378



Integration Results for DAD1 B, Sig=214,4 Ref=off

RetTim	Width	Area	Height	Area%	MS(+)
1.07	0.01	1.71	2.26	0.12	ND
1.09	0.01	0.38	0.71	0.03	310
1.15	0.02	1447.76	1228.57	98.90	378
1.22	0.01	10.13	12.47	0.69	376
1.48	0.02	1.97	1.93	0.13	ND
1.61	0.01	0.89	1.15	0.06	ND
1.95	0.02	1.10	1.17	0.07	ND

Integration Results for DAD1 C, Sig=254,4 Ref=off

RetTim	Width	Area	Height	Area%	MS(+)
1.07	0.01	0.85	1.09	0.09	ND
1.09	0.01	0.08	0.24	0.01	310
1.15	0.02	935.52	841.58	98.90	378
1.22	0.01	7.36	8.84	0.78	376
1.48	0.02	1.54	1.30	0.16	ND
2.09	0.02	0.53	0.51	0.06	142

Integration Results for MSD1 TIC, MS File

RetTim	Width	Area	Height	Area%	MS(+)
1.17	0.03	623321.63	267569.00	100.00	378

Ret. Time: 1.17

<<<< POSITIVE SPECTRA >>>>

ES-API Positive

