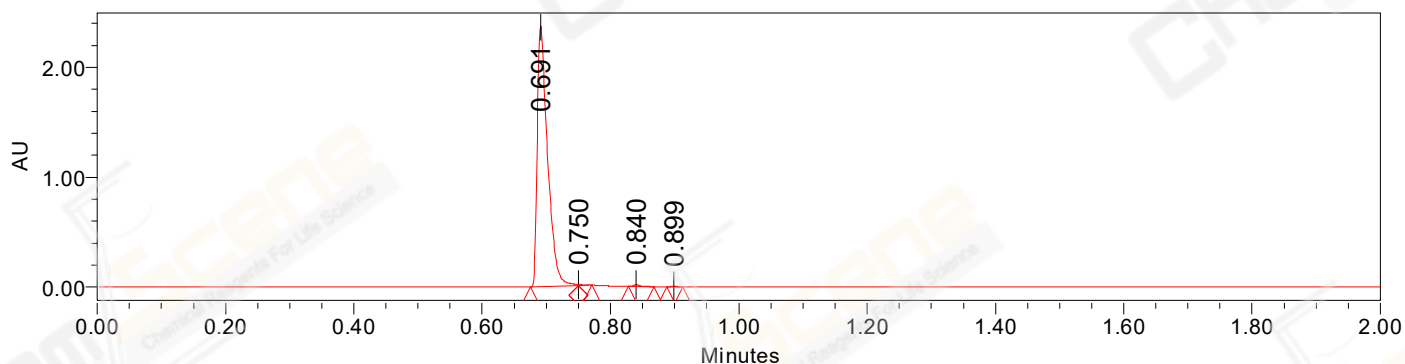


SAMPLE INFORMATION

CAS NO.: 1009298-59-2
Sample information: 2:F,6
Vial: 1
Injection #: 1
Injection Volume: 0.50 ul
Run Time: 2.8 Minutes
Sample Set Name: 20220128

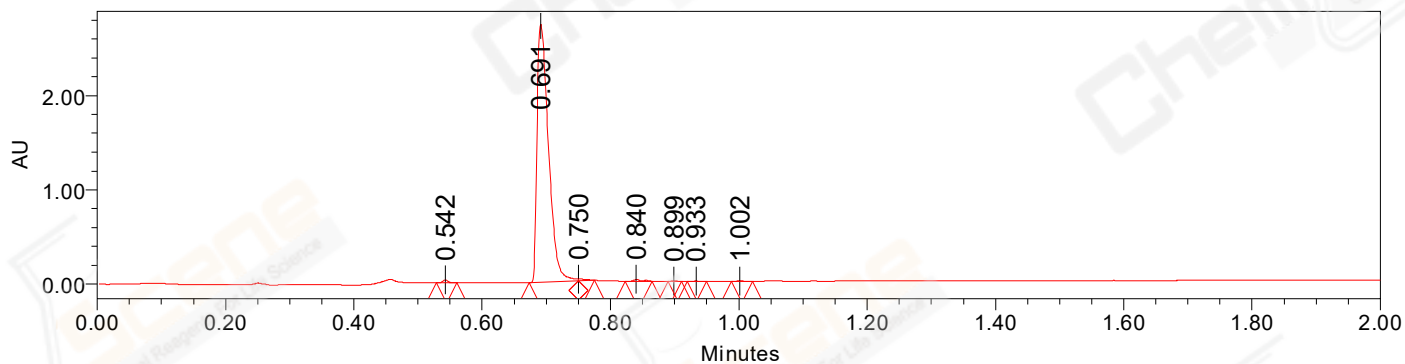
Acquired By: LY
Date Acquired: 1/28/2022 5:40:41 PM CST
Acq. Method Set: 1_POS_2MIN
Date Processed: 1/29/2022 1:53:17 PM CST,
Processing Method: PDA_01, MS_scan
Channel Name: PDA Ch1 214nm@4.8nm, MS TIC,
Column Name: Poroshell 120 EC-C18 A-RP-929

Auto-Scaled Chromatogram



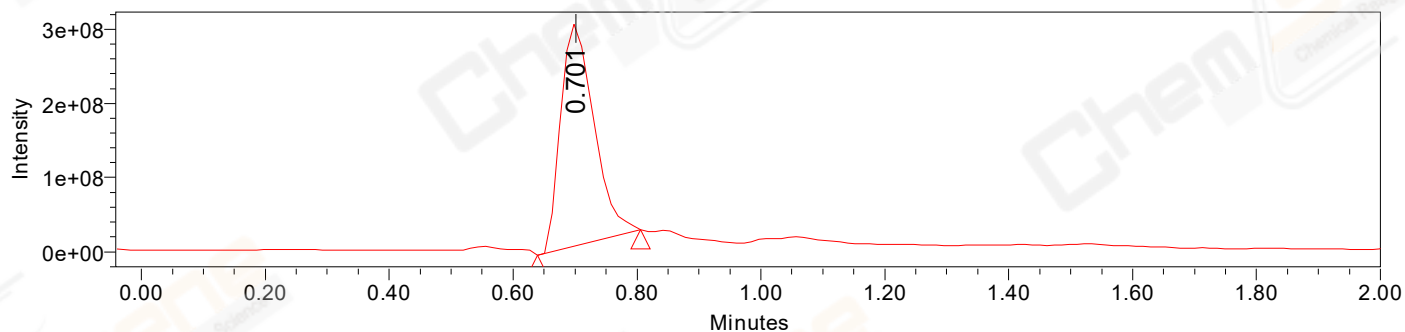
Processed Channel Descr. PDA Ch2 254nm@4.8nm

Auto-Scaled Chromatogram



Processed Channel Descr. PDA Ch1 214nm@4.8nm

Auto-Scaled Chromatogram



Processed Channel Descr. ACQ-SQD2 1: MS Scan MS TIC, Smoothed by 9 point Savitzky-Golay Filter., Time offset by -0.053 mins. (1: 150.00-1000.00 ES+, Centroid, CV=30)

Peak Results
Channel Name: PDA Ch2 254nm@4.8nm

	RT	Width (sec)	Area	Height	% Area	Channel Name
1	0.691	4.500	2650709	2375879	99.20	PDA Ch2 254nm@4.8nm
2	0.750	1.250	5474	8620	0.20	PDA Ch2 254nm@4.8nm
3	0.840	2.400	13047	17801	0.49	PDA Ch2 254nm@4.8nm
4	0.899	1.500	2721	4457	0.10	PDA Ch2 254nm@4.8nm

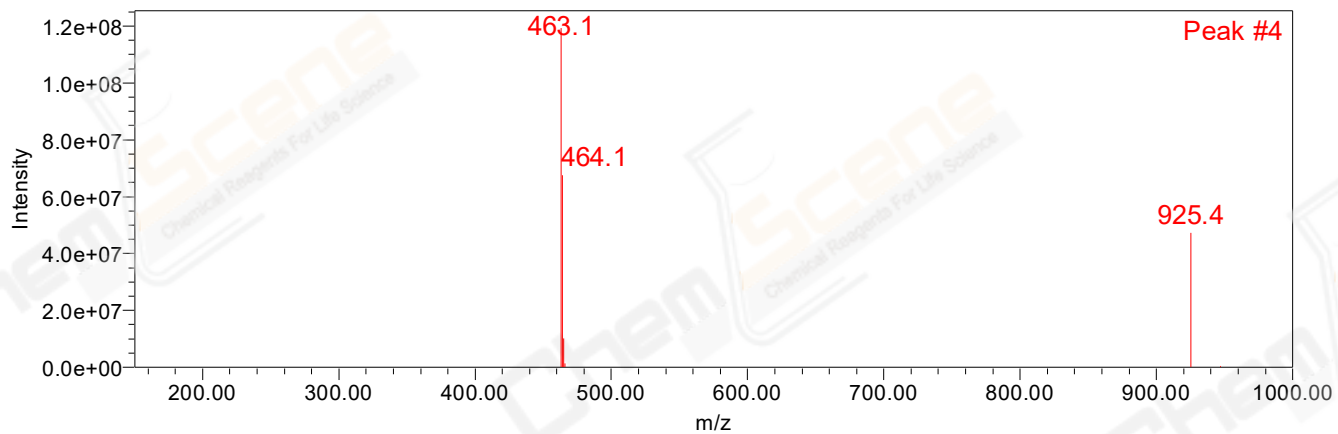
Peak Results
Channel Name: PDA Ch1 214nm@4.8nm

	RT	Width (sec)	Area	Height	% Area	Channel Name
1	0.542	1.900	17910	30543	0.52	PDA Ch1 214nm@4.8nm
2	0.691	4.600	3384980	2735492	98.21	PDA Ch1 214nm@4.8nm
3	0.750	1.500	13451	16498	0.39	PDA Ch1 214nm@4.8nm
4	0.840	2.550	18100	20533	0.53	PDA Ch1 214nm@4.8nm
5	0.899	1.250	4410	7541	0.13	PDA Ch1 214nm@4.8nm
6	0.933	1.850	3439	4551	0.10	PDA Ch1 214nm@4.8nm
7	1.002	2.000	4343	6530	0.13	PDA Ch1 214nm@4.8nm

Peak Results
Channel Name: MS TIC

	RT	Width (sec)	Area	Height	% Area	Channel Name
1	0.701	10.022	1123263319	296938900	100.00	MS TIC

Match Plot



Retention Time 0.701 Channel Name MS TIC