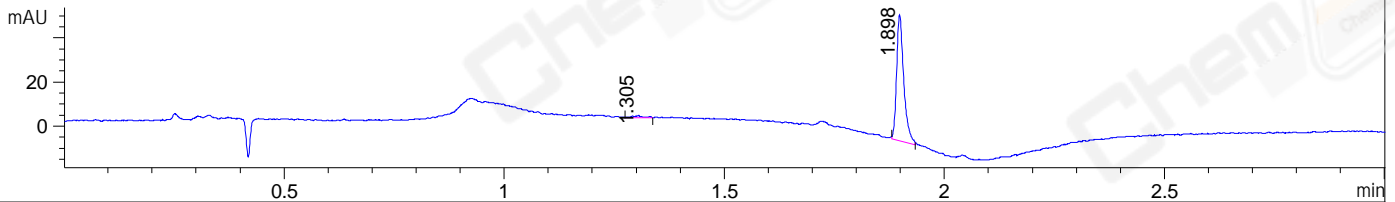
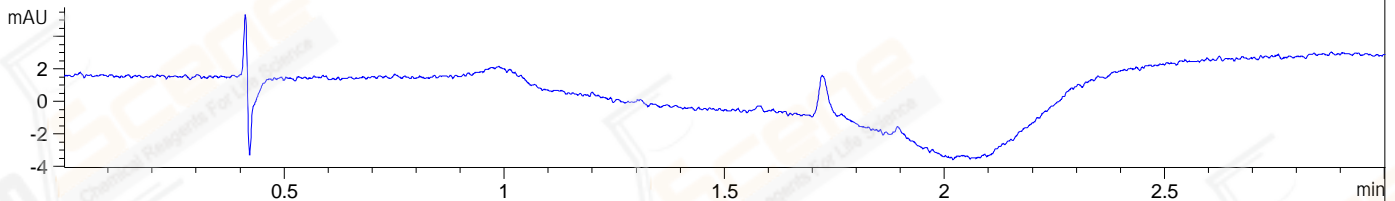


File ..\DATA\2019\20190603\587\CPK2019-603-08988.D Tgt Mass (CHM):  
 Injection Date : 3 Jun 19 2:39 pm +0800 Seq. Line : 24  
 Sample Name : CPK2019-603-08988 Location : P1-C-01  
 Acq. Operator : ZJ\_1432 Inj : 1  
 Spec. Reported : MS Integration Inj Volume : 1 ul  
 Acq. Method : D:\Chem32\1\data\2019\20190603\587\1-POS-3MIN.M  
 Analysis Method : D:\CHEM32\1\DATA\2019\20190603\587\1-POS-3MIN.M  
 Catalog No : CS-1454 Batch#08988  
 Method Info : Mobile Phase: A: water(0.01%TFA) B:ACN(0.01%TFA)  
 Gradient: 5% to 95%B within 1.3 min  
 Flow Rate :1.8ml/min  
 Column :SunFire C18, 4.6\*50mm,3.5um A-RP-433  
 Oven Temperature : 45□

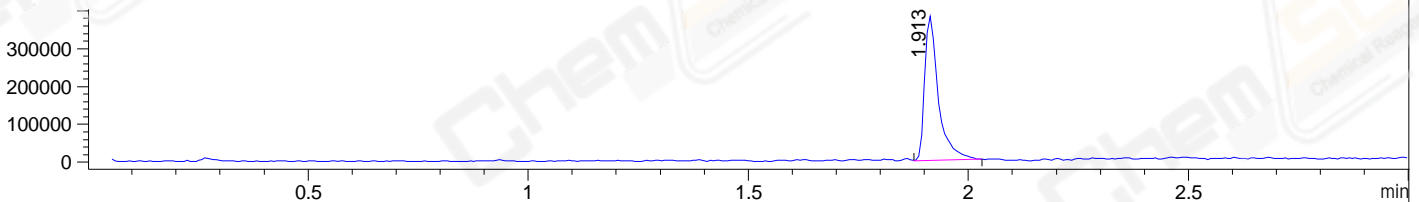
DAD1 B, Sig=214,4 Ref=off



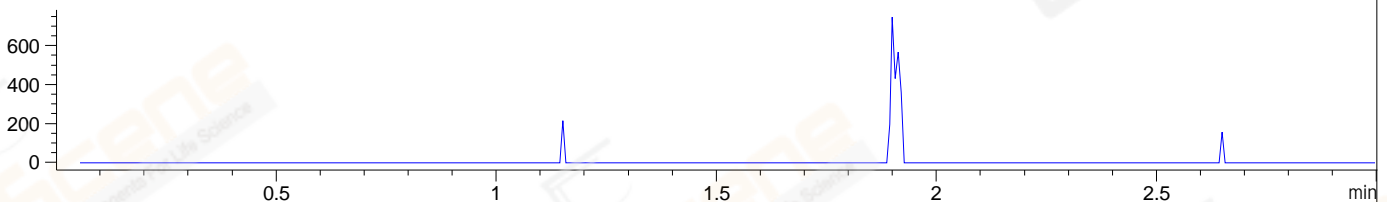
DAD1 C, Sig=254,4 Ref=off



MSD1 TIC, MS File ES-API, Pos, Scan, Frag: 70



Ion 411.5121, MSD1 411.5121, Target Mass 410.5121 +H Positive, EIC=411.21:412.21



## Integration Results for DAD1 B, Sig=214,4 Ref=off

RetTim	Width	Area	Height	Area%	MS (+)
1.31	0.02	1.28	0.87	1.95	ND
1.90	0.02	64.39	57.23	98.05	375

## Integration Results for DAD1 C, Sig=254,4 Ref=off

RetTim	Width	Area	Height	Area%	MS (+)
--------	-------	------	--------	-------	--------

## Integration Results for MSD1 TIC, MS File

RetTim	Width	Area	Height	Area%	MS (+)
1.91	0.03	822167.88	381294.13	100.00	375

Ret. Time: 1.91

<<<< POSITIVE SPECTRA >>>>

ES-API Positive

