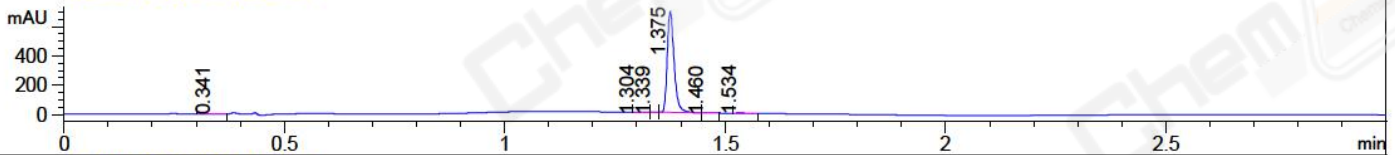
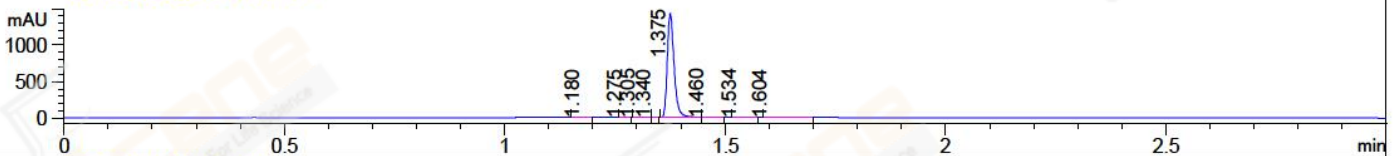


File ..018\20180301\20180301-1\CPK2018-301-09170.D Tgt Mass (CHM):  
Injection Date : 1 Mar 18 6:30 pm +0800 Seq. Line : 73  
Sample Name : CPK2018-301-09170 Location : P2-A-09  
Acq. Operator : SYSTEM Inj : 1  
Spec. Reported : MS Integration Inj Volume : 1 ul  
Acq. Method : D:\LCMS03\Data\2018\20180301\20180301-1\1-POS-3MIN.M  
Analysis Method : D:\LCMS03\Data\2018\20180301\20180301-1\1-POS-3MIN.M  
Catalog No : CS-0259 Batch#09170  
Method Info : Mobile Phase: A: water(0.01%TFA) B:ACN(0.01%TFA)  
Gradient: 5% to 95%B within 1.3 min  
Flow Rate :1.8ml/min  
Column :SunFire C18, 4.6\*50mm,3.5um A-RP-186  
Oven Temperature : 45C

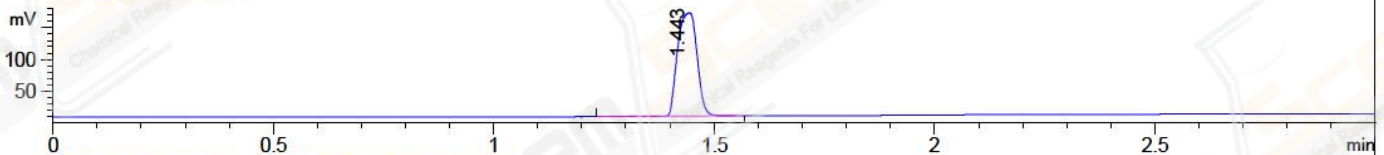
DAD1 A, Sig=214,4 Ref=off



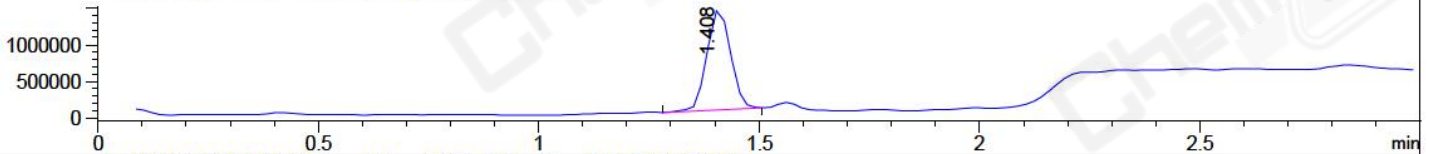
DAD1 B, Sig=254,4 Ref=off



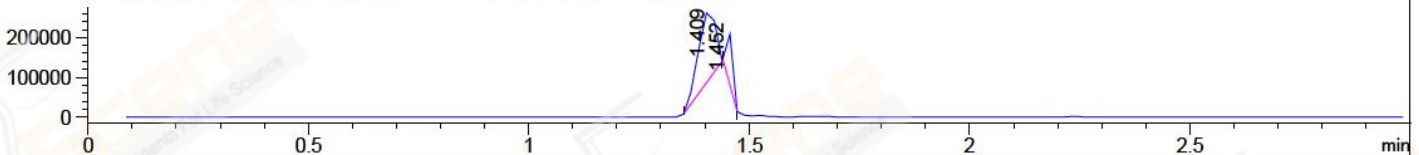
ELS1 A, ELSD Signal



MSD1 TIC, MS File ES-API, Pos, Scan, Frag: 70



Ion 592.5, MSD1 592.5, Target Mass 591.5 +H Positive, EIC=592.2:593.2



Integration Results for DAD1 A, Sig=214,4 Ref=off

RetTim	Width	Area	Height	Area%	MS (+)
0.34	0.03	1.55	0.80	0.20	102
1.30	0.02	1.90	1.84	0.25	466
1.34	0.01	0.24	0.40	0.03	466
1.38	0.02	748.53	686.54	98.93	592
1.46	0.02	1.29	1.24	0.17	592
1.53	0.02	3.12	2.79	0.41	301

Integration Results for DAD1 B, Sig=254,4 Ref=off

RetTim	Width	Area	Height	Area%	MS (+)
1.18	0.01	0.42	0.41	0.03	102
1.27	0.01	0.64	0.80	0.04	358
1.31	0.02	4.60	4.24	0.29	466
1.34	0.01	0.09	0.18	0.01	466
1.38	0.02	1547.67	1433.42	98.95	592
1.46	0.02	4.37	3.48	0.28	592
1.53	0.02	5.47	4.88	0.35	301
1.60	0.03	0.90	0.36	0.06	301

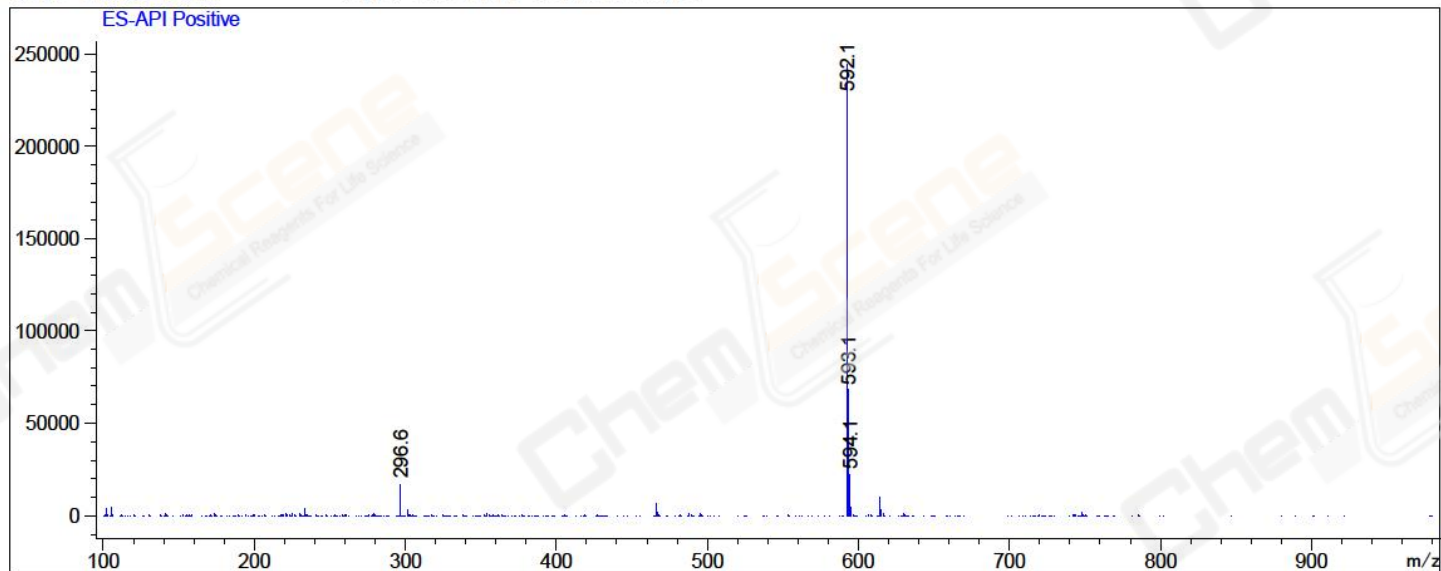
## Integration Results for ELS1 A, ELSD Signal

RetTim	Width	Area	Height	Area%	MS (+)
1.44	0.05	500.81	163.26	100.00	592

## Integration Results for MSD1 TIC, MS File

RetTim	Width	Area	Height	Area%	MS (+)
1.41	0.06	5123820.00	1380409.63	100.00	592

Ret. Time: 1.41 <<<< POSITIVE SPECTRA >>>>



\*\*\* End of Report \*\*\*